

Palomar Mountain Postcards

Peter Brueggeman
Mount Helix, California, 2024

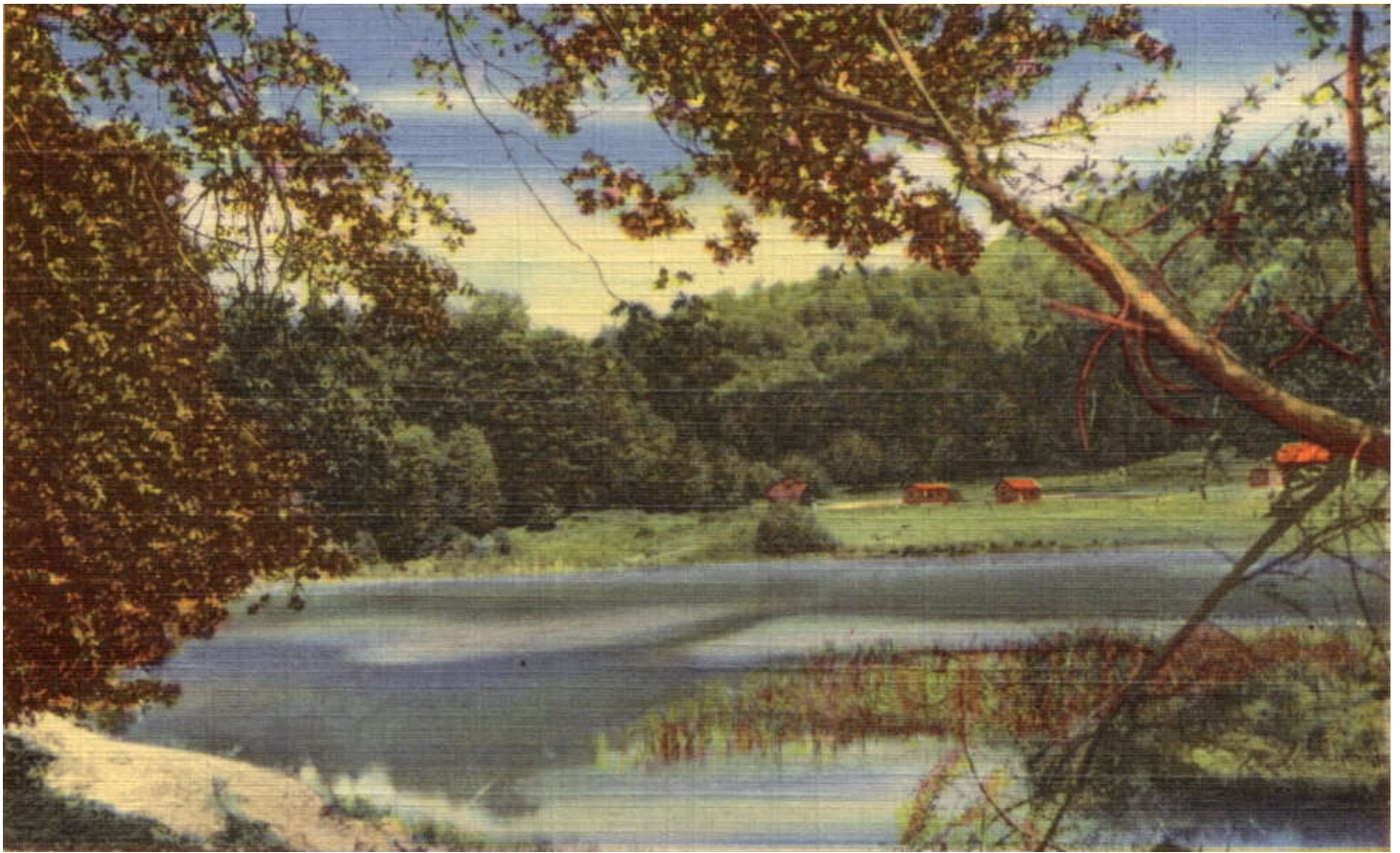


The following postcards feature Palomar Mountain. Most postcards are undated; postmark or date/year is noted when present on card or found on an eBay sale item. Observatory postcards and Robert Asher postcards are numerous, and these are not thoroughly presented.

TABLE OF CONTENTS

Doane Valley.....
East Grade & Lake Henshaw.....
Views.....
Palomar Gardens Cafe.....
Thompson's Summit Grove.....
Skyline View Ranch.....
Bailey's Hotel aka Palomar Mountain Lodge.....
Scenes.....
Highway to the Stars, S6.....
Rincon Springs Store & Cafe.....
Telescope / Observatory.....
Miscellaneous

DOANE VALLEY



Doane's Pond



Doane's

Pool

Palomar

State

Park

Palomar

Mountains

California



F 8413

May 1953



July 19, 1912 postmark



Illegible postmark *"I wish you were here with us and could have taken the ride we did today. It was just fine. It is delightful here now and quite a few improvements since 1908."*



The
Mess Hall

Palomar
Youth
Camp

Doane
Valley

Palomar
State Park

Sponsored by
San Diego
City-County
Camp

Commission

Palomar
Mountain
California



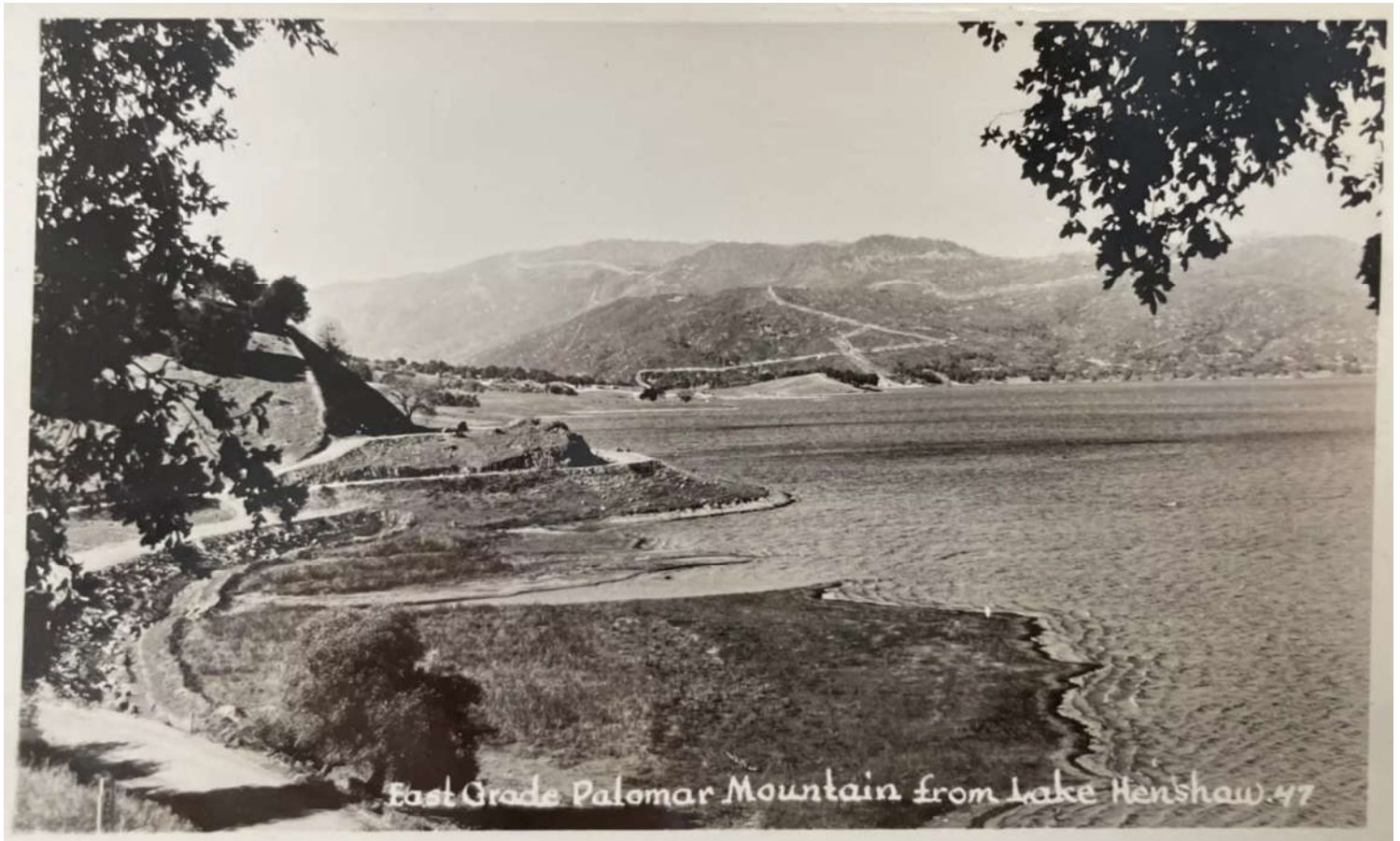
F 8412

EAST GRADE & LAKE HENSHAW

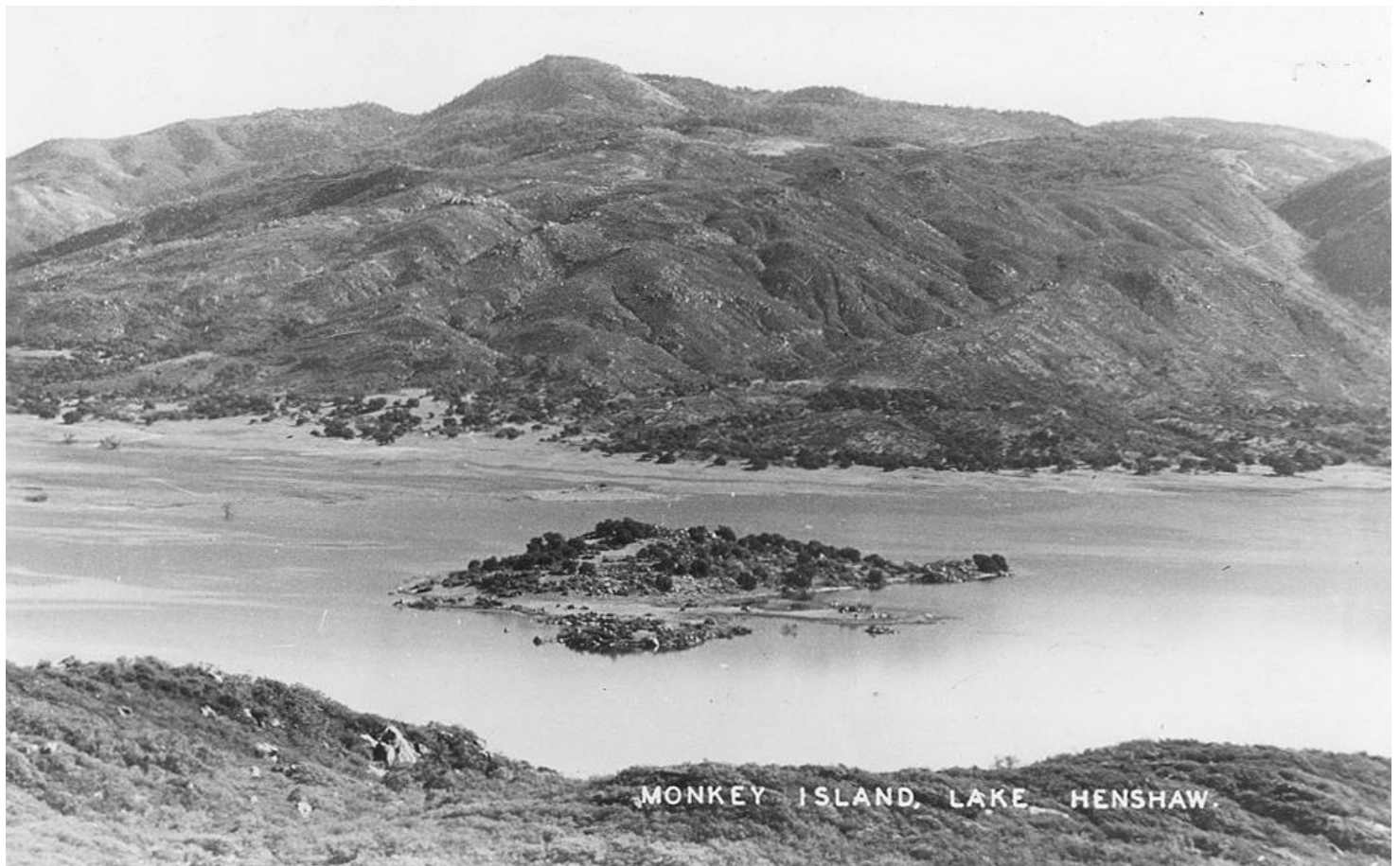
Henshaw Dam and Palomar Grade, San Diego, Calif.



Feb 25, 1927 postmark



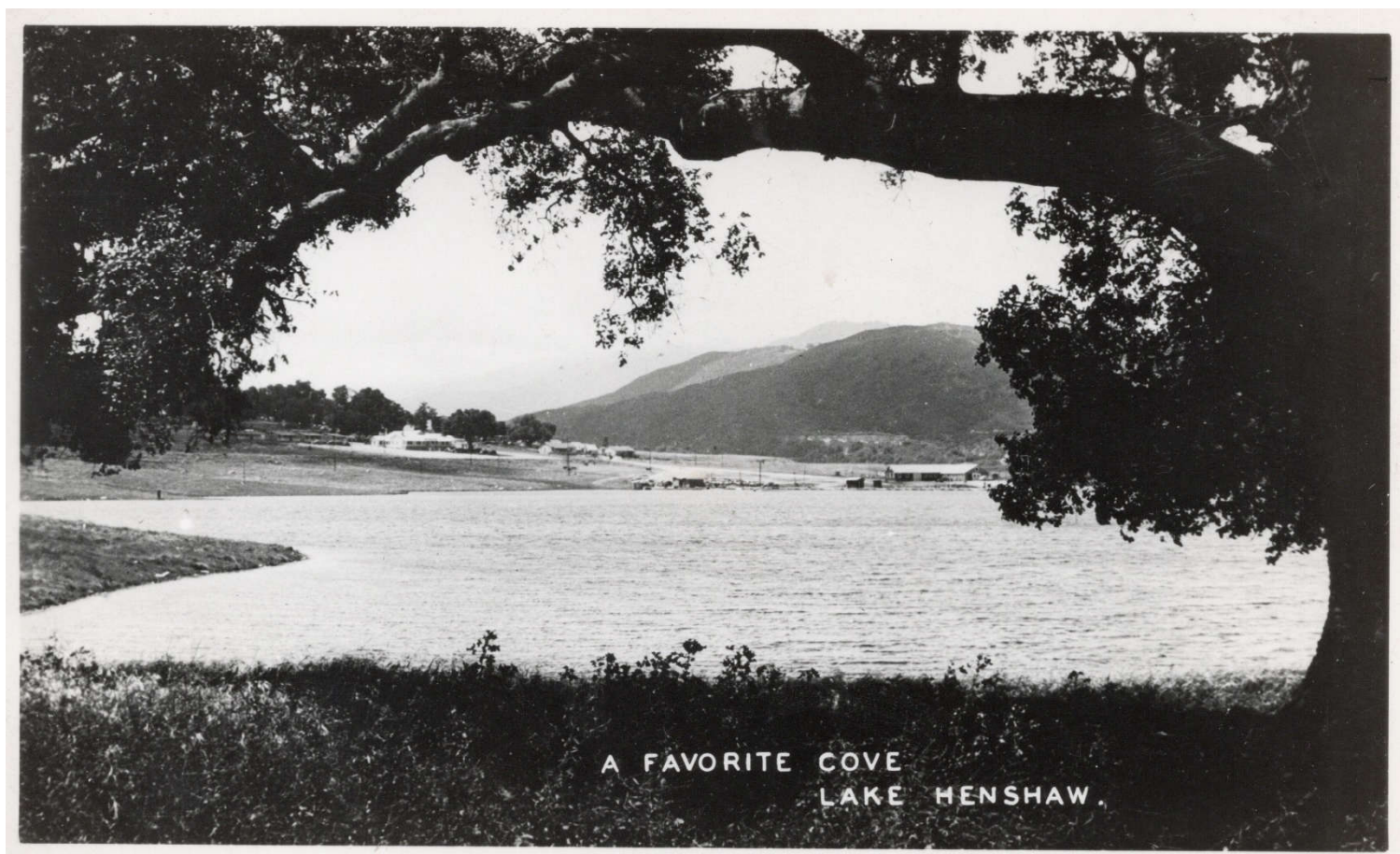
East Grade Palomar Mountain from Lake Henshaw 47

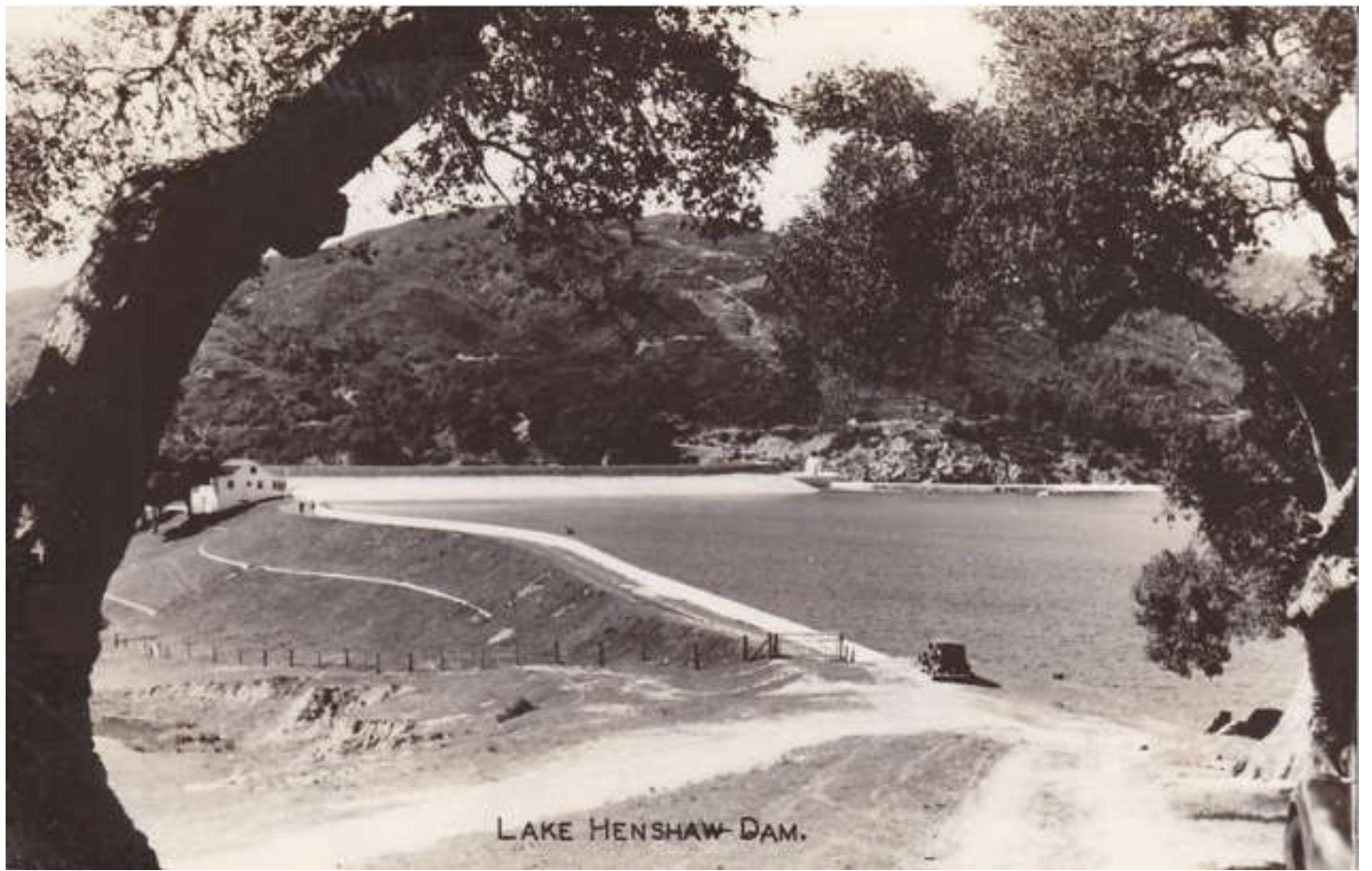


MONKEY ISLAND, LAKE HENSHAW.



Lake Henshaw and Dam - 44
East Grade, Colmar Mountain





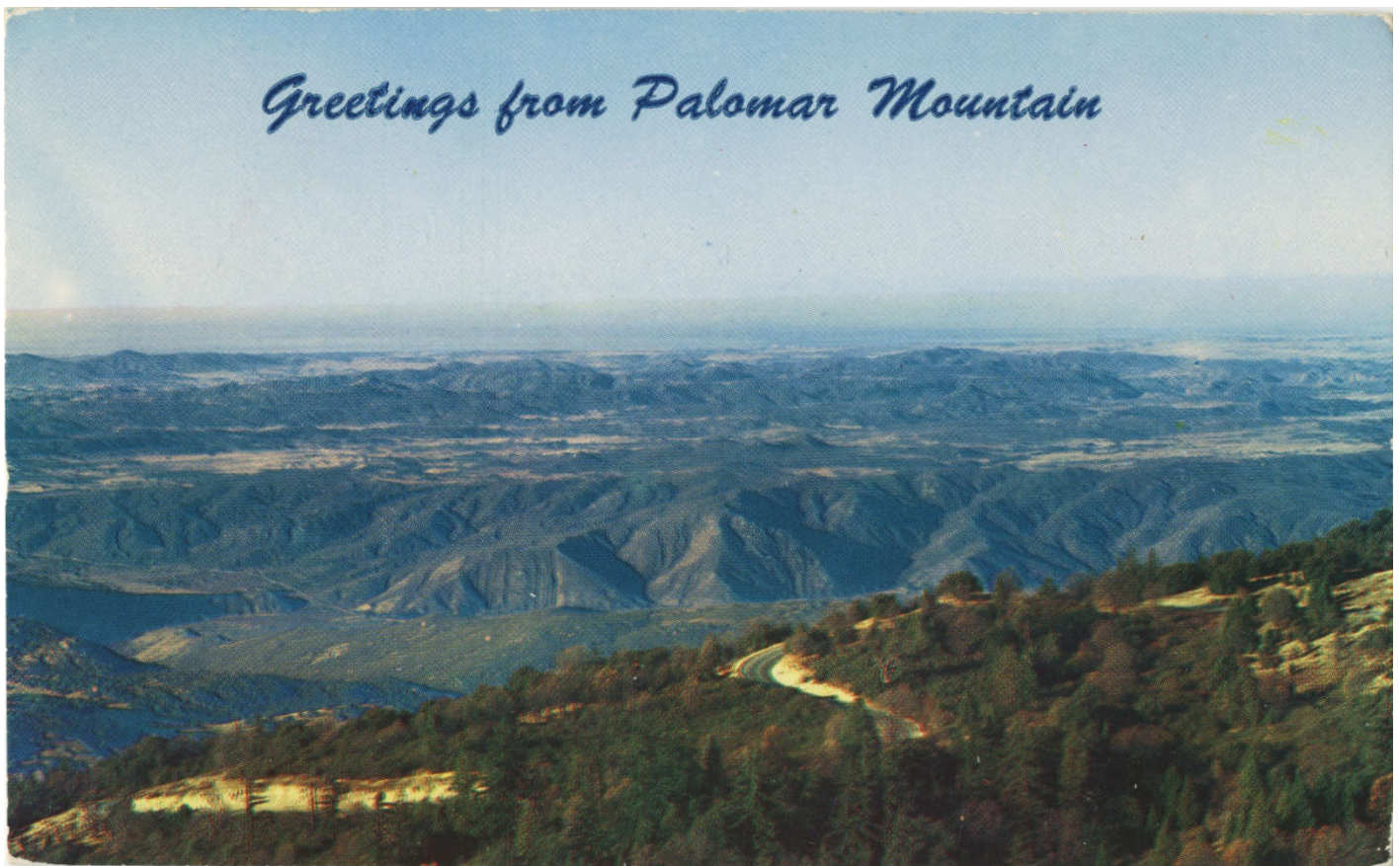


VIEWS



Panorama of Palomar Mountains - California

F-7939



Greetings from Palomar Mountain

June 29, 1964 postmark



Asher's Park



Palomar Mountain,
San Diego County, Calif.

1928

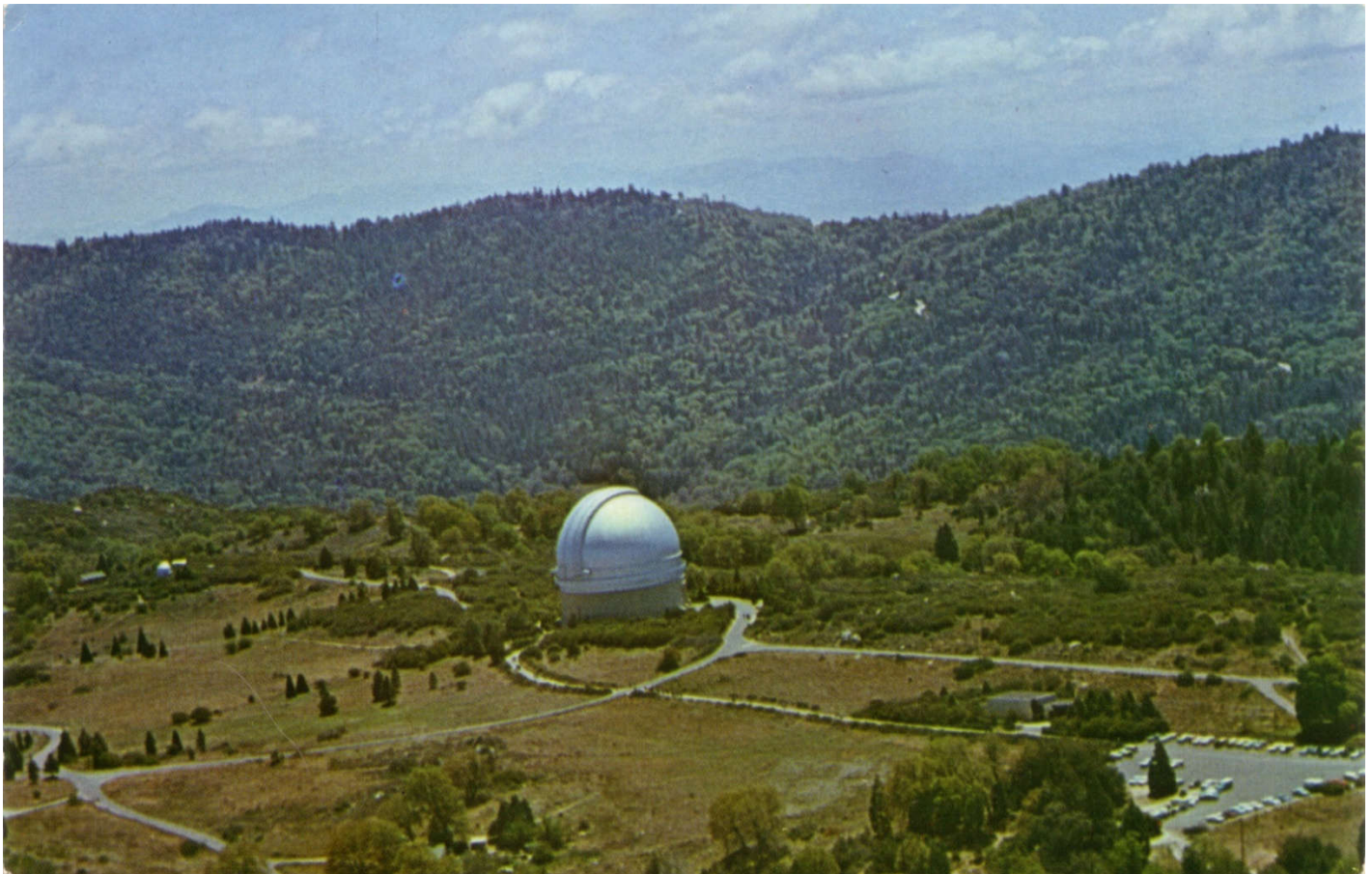


looking at High Point from the Observatory, June 17, 1957





Looking at Crestline from the Observatory

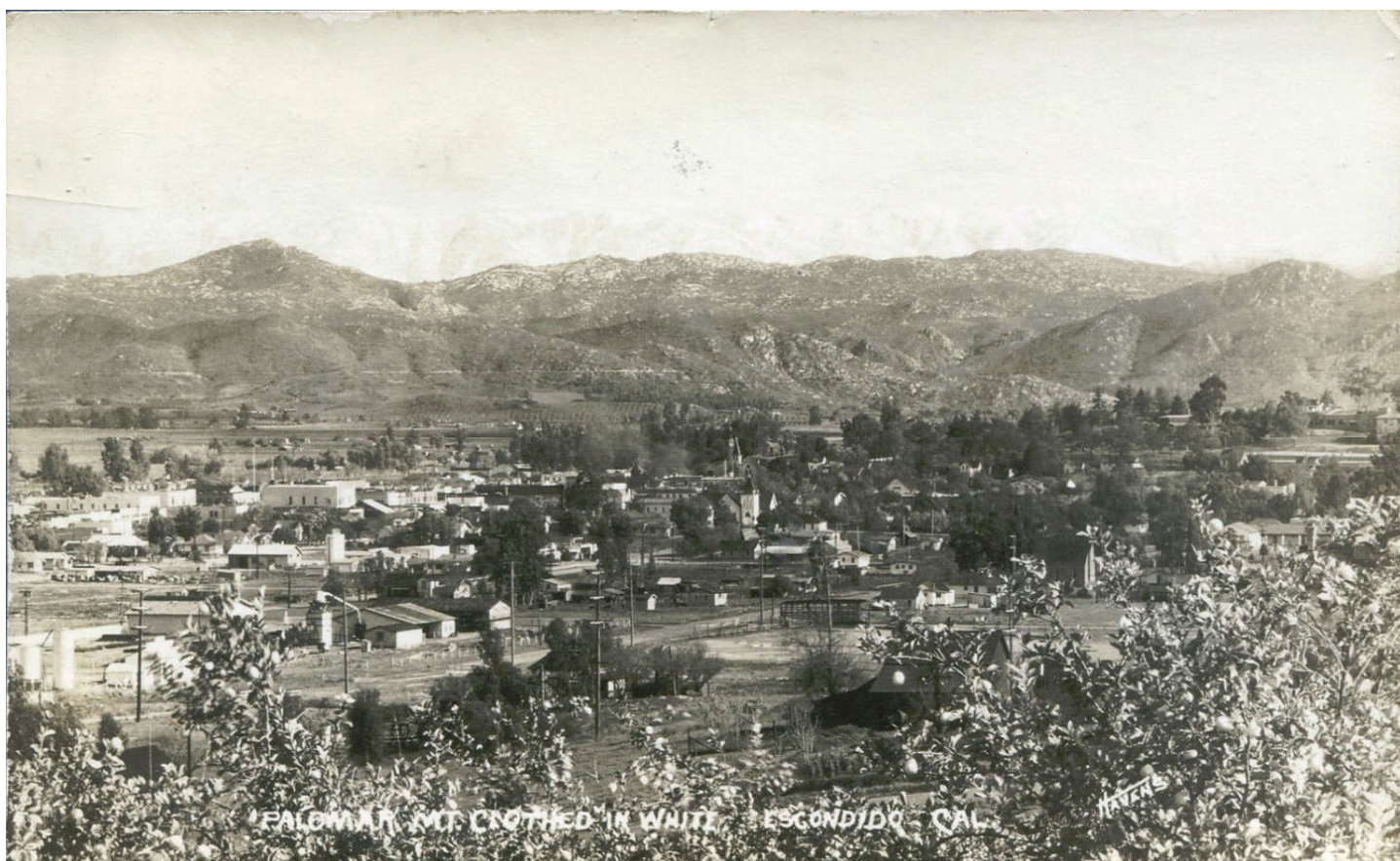


Looking at Crestline from the Observatory, Handwritten date December 15, 1961



Palomar Mountain from Warner Hot Springs

W-26



PALOMAR MT. CLOTHED IN WHITE - ESCONDIDO - CAL.

HAVENS



1941





Palomar Mountain, California



Vivid fall colors shelter a future activity area on the 360-acre multi-purpose campsite of the Spanish Trails Girl Scout Council. Campsite is located near Palomar mountain in San Diego County, California, adjacent to State Park lands on one side and the Cleveland National Forest on other boundary.

PLACE
STAMP
HERE

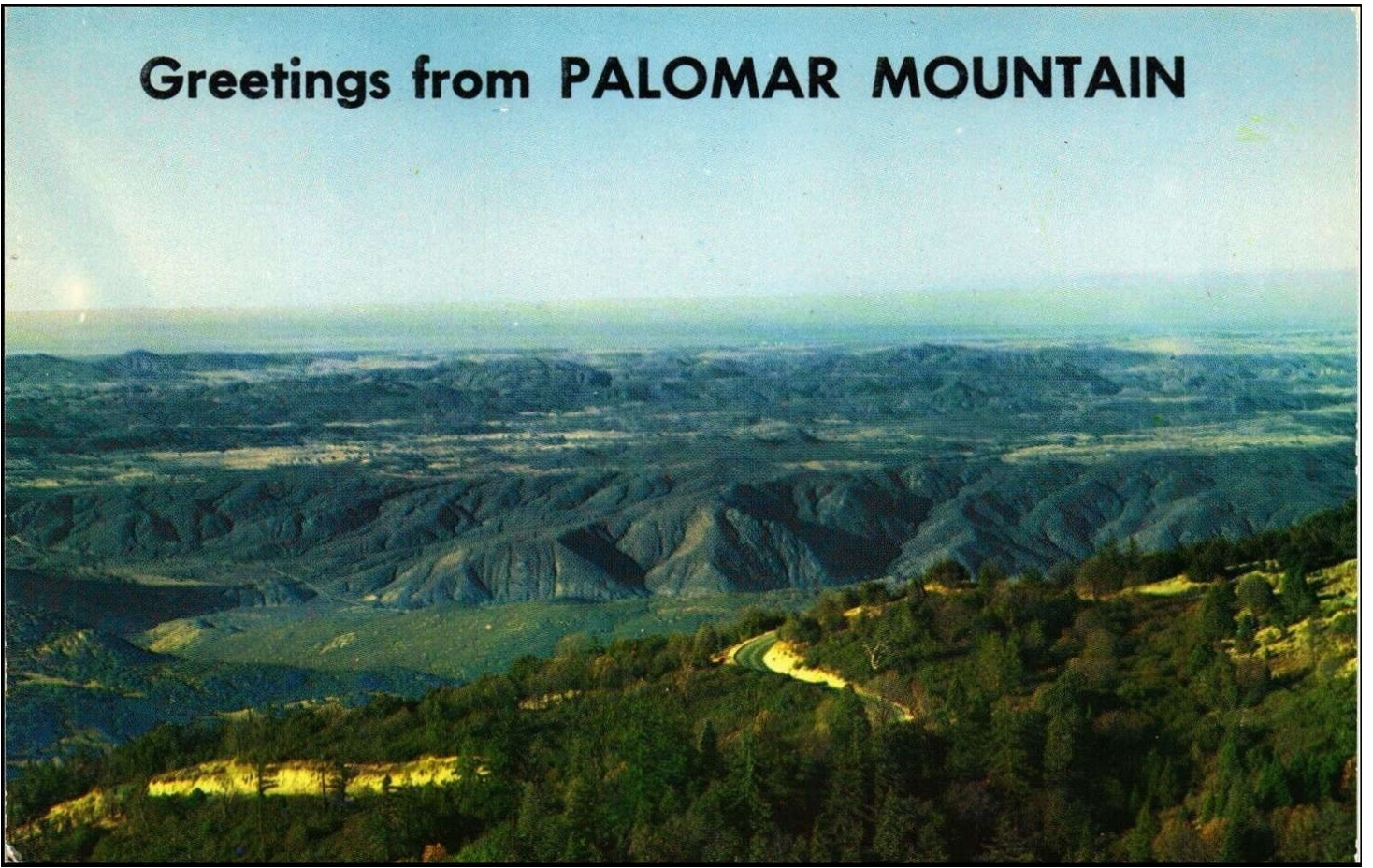
POST CARD

Published by General Post Card Co., Box 131, East Greenville, Pa.

13212



Greetings from PALOMAR MOUNTAIN



PALOMAR GARDENS CAFE

now Oak Knoll Campground on S6

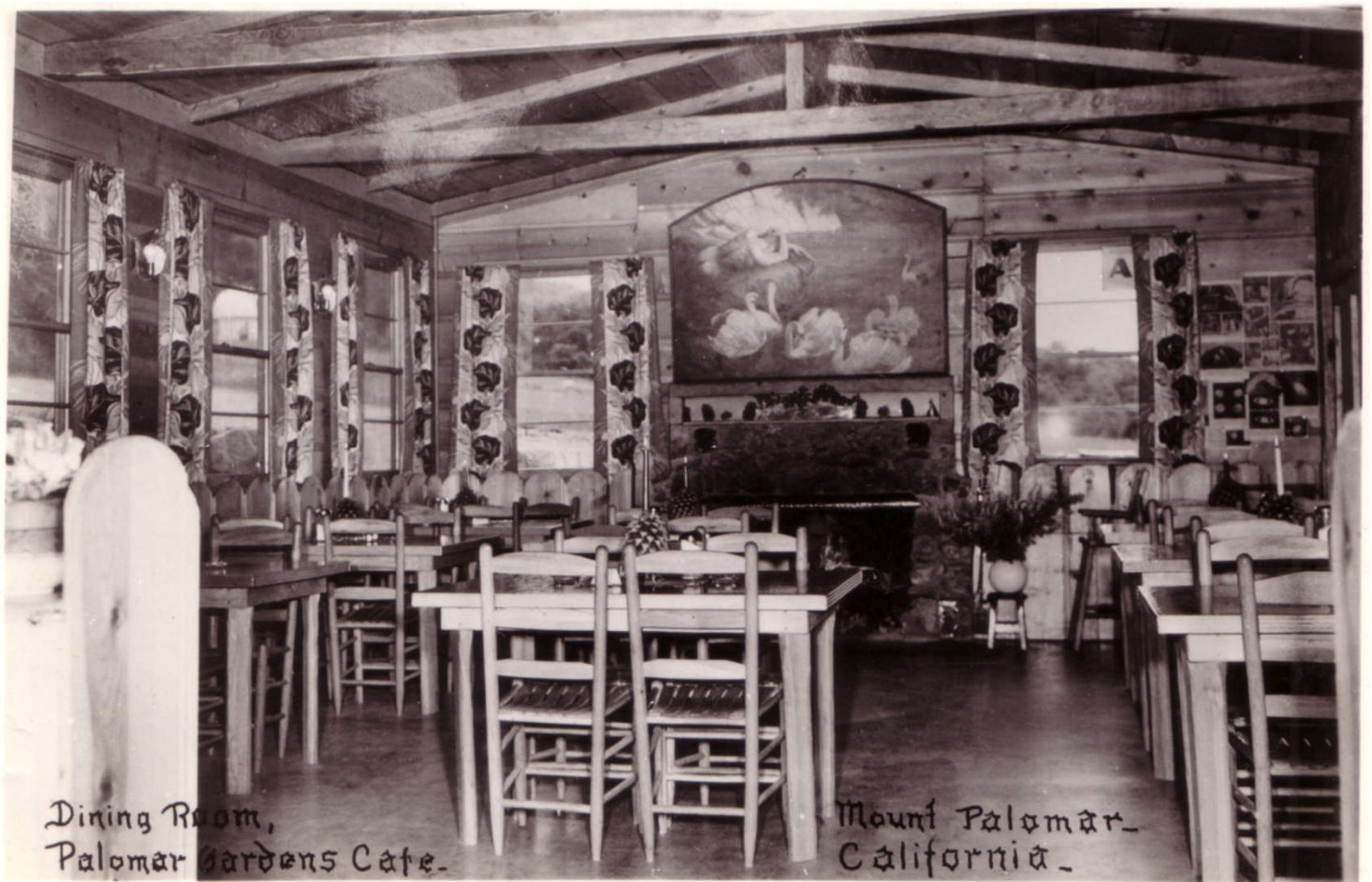


August 8. 1949 postmark



George Adamski, at back left





Dining Room,
Palomar Gardens Cafe.

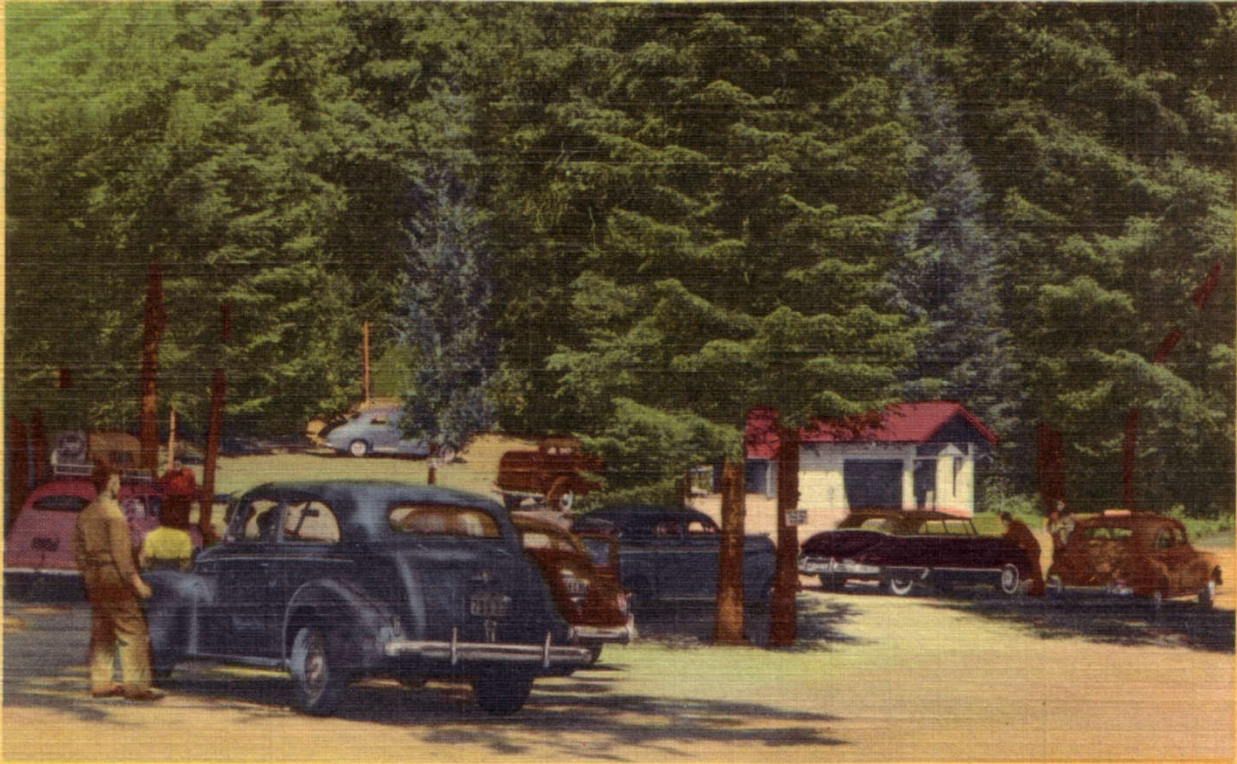
Mount Palomar-
California.

August 9. 1949 postmark

Thompson's Summit Grove

now Palomar Mountain General Store & Mother's Kitchen Restaurant

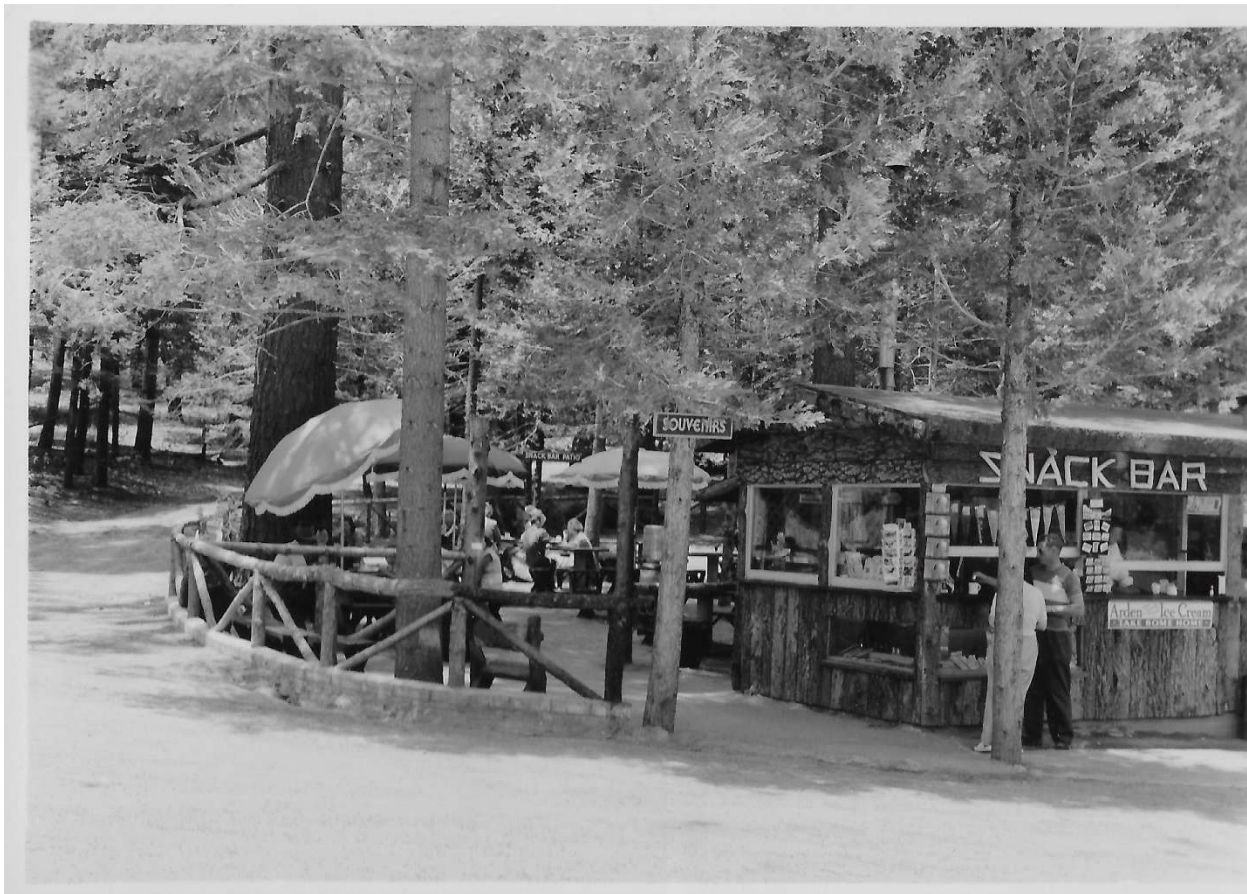
Summit Grove Service Station, Palomar Mountains



1948



Thompson's Summit Grove. Cars are circa 1956



Snack Bar
and
Patio
at
Thompson's
Summit
Grove

Palomar
Mountain
California



F 9132

1950

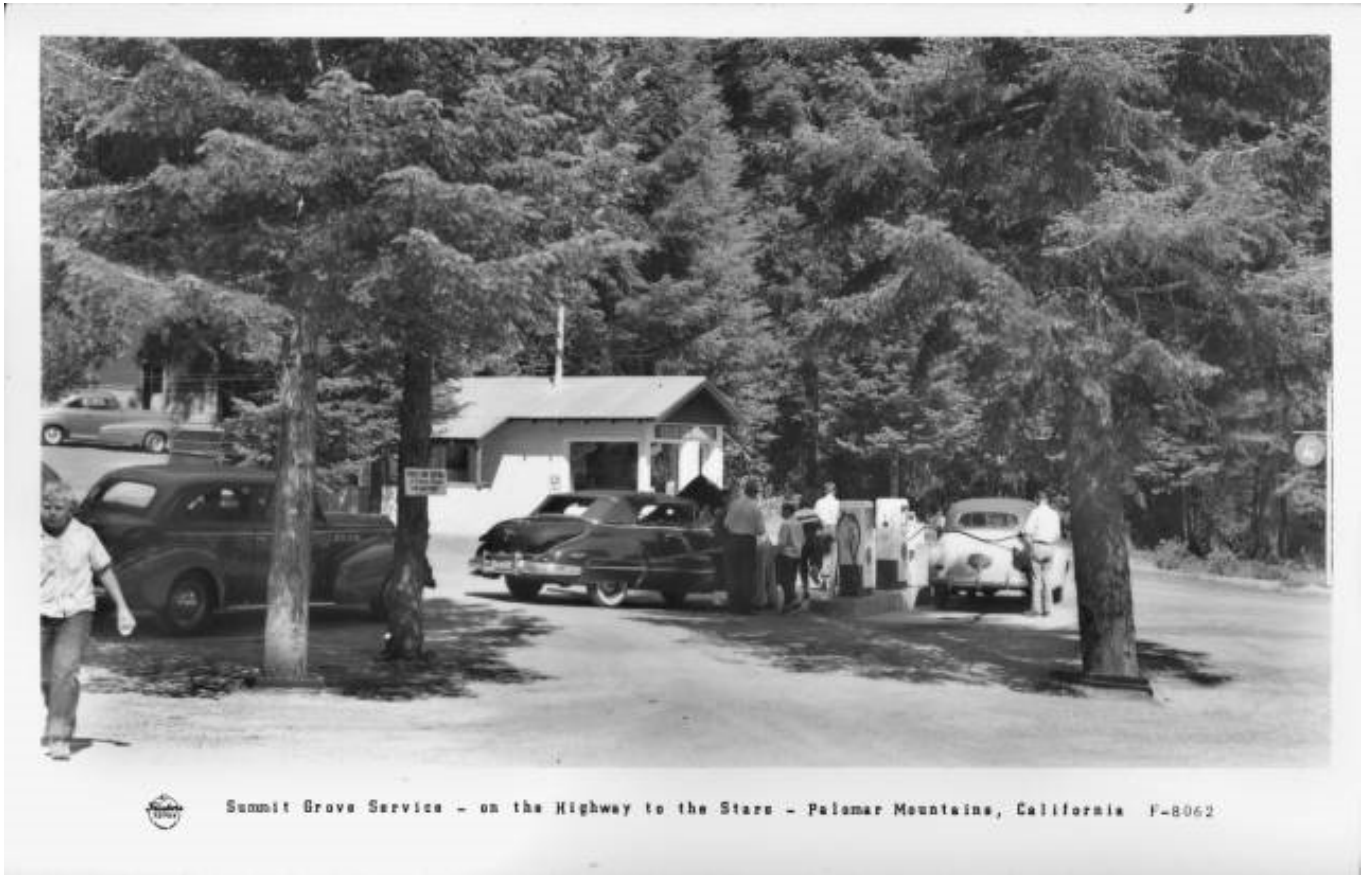


In
The
Patio
at
Thompson's
Summit
Grove

Palomar
Mountain
California



F 9133

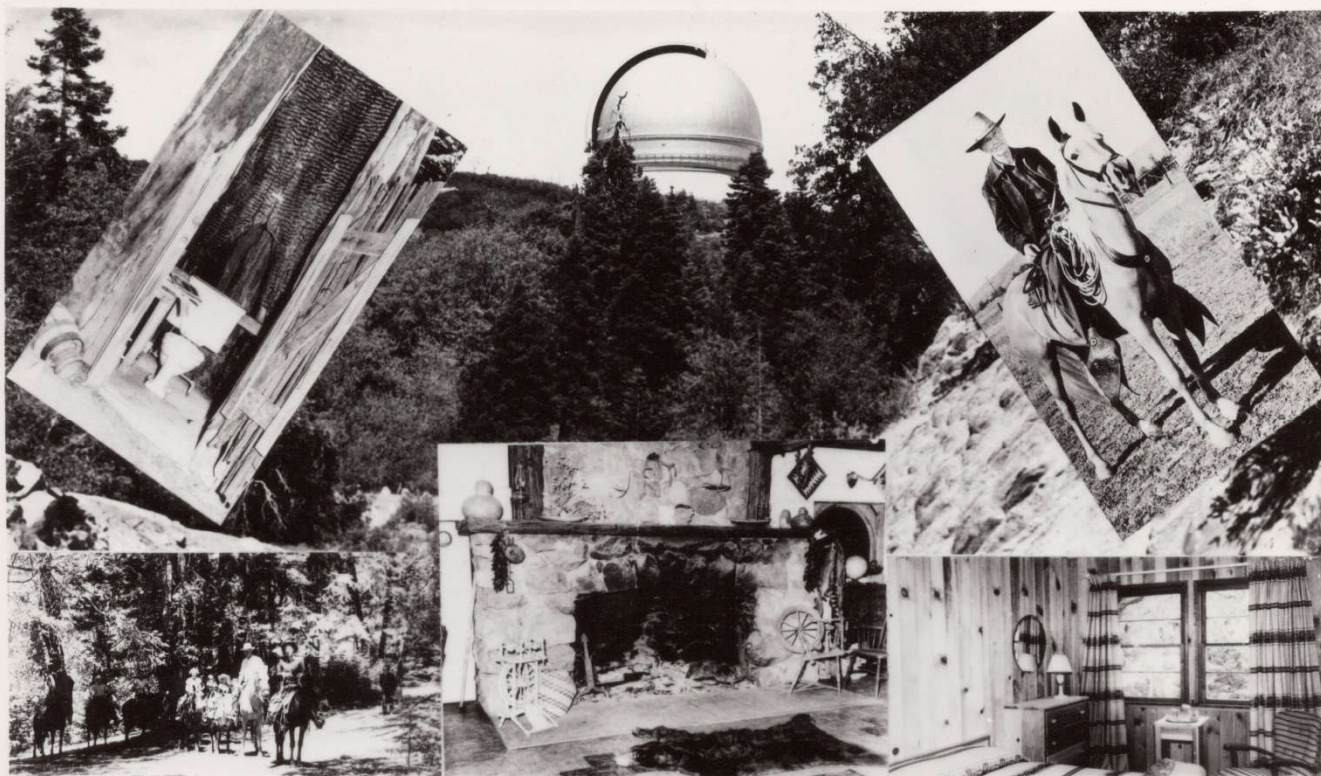


Cars are circa 1948

Skyline View Ranch

now known as Palomar Mountain Lodge at the end of Crestline





Skyline View Guest Ranch - Mount Palomar, California E-4299



ABOVE THE CLOUDS
AT SKYLINE VIEW
RANCH
MT PALOMAR
CALIF.

BAILEY'S HOTEL

aka Palomar Mountain Lodge



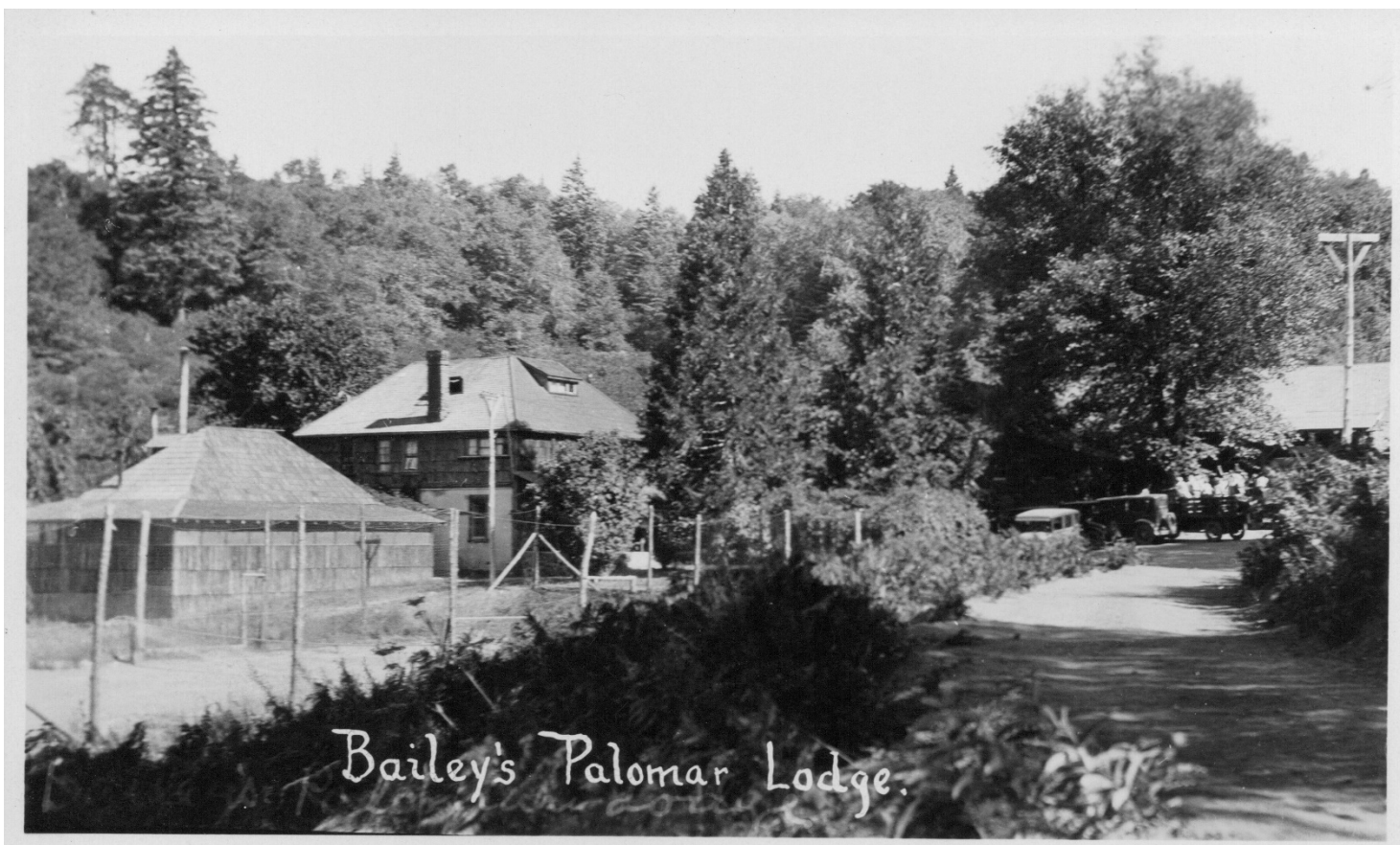
MERIAL VALLEY - PACHMAR LODGE
SAN DIEGO COUNTY, CALIF.







July 11, 1914 postmark





May 31, 1942 date



PALOMAR MT. ELEV. 6000 FT.



September 5, 1916 postmark



July 1924





"Winter in Palomar" postcard from Theo Bailey, Dec 17, 1911 postmark



Sept 25, 1941 postmark





September 23, 1909 postmark

Scenes



The
Summit
of
Palomar
Grade

Palomar
Mountains
California



F-8209





Palomar Mountain
San Diego County, Calif.



New Palmar Mt Grade



Jack Frost's Handiwork
on the Summit of Palomar Grade
Palomar Mountains, California.



F-8210



A Beautiful Drive in Palomar Reservoir, California



P-8951



A BEAUTIFUL DRIVE
PALOMAR MOUNTAINS, CALIF.



1912



Lupin palomar mt.



Postmark August 22, 1939



Postmark August 26, 1924

“How are these for big trees! Took an auto ride this morn and stole some great big fine apples. For dinner I had watermelon, salad, chicken, potatoes, string beans, milk, ice cream and cake. I ought to get fat from all I eat. Lots of nice people here. I sleep every afternoon. ...”



Indian Teepee

Palmer

Postmark August 12, 1922



Palomar Mountain,
San Diego County Calif.



Palomar Mountain
San Diego County, Calif.



Palomar Mountain
San Diego County, Calif.



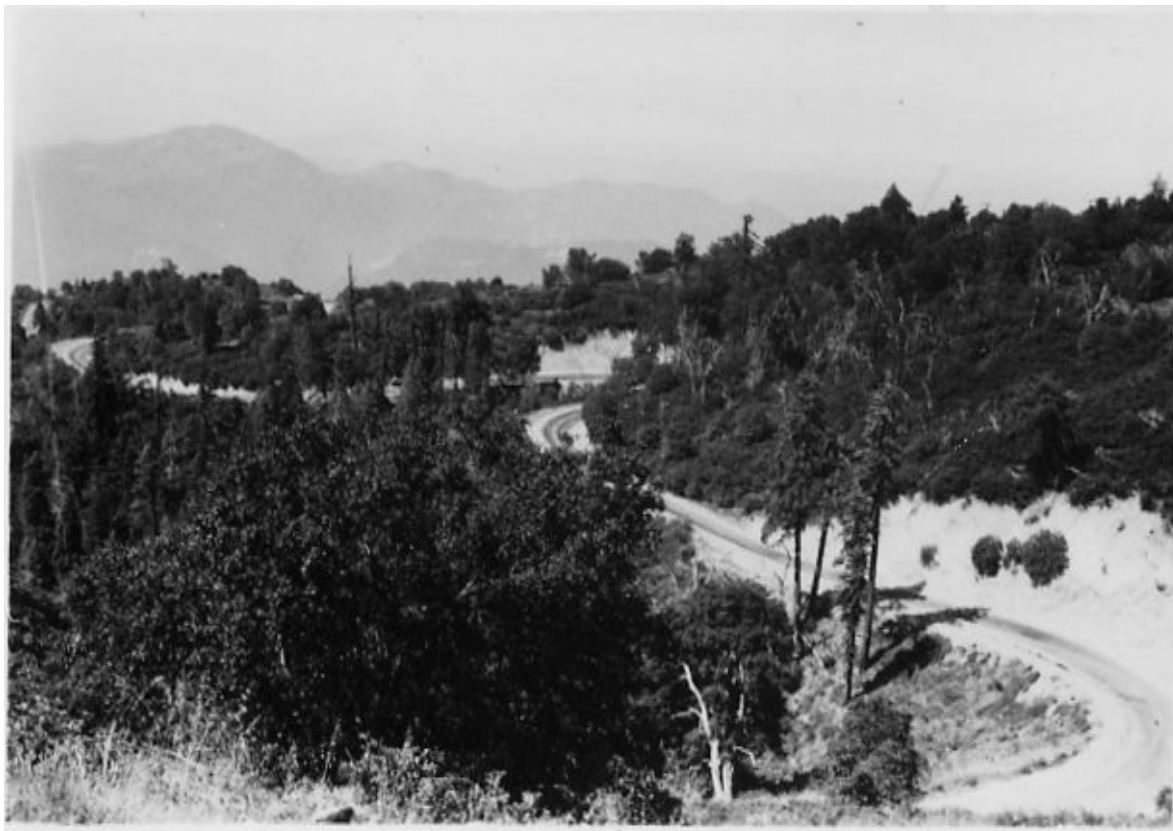


A Beautiful Drive in Palomar Mountains, California



F-8060

HIGHWAY TO THE STARS, S6



The
Highway
to the
Stars

Palomar
Mountains
California



F 8415

July 21, 1949 postmark



Highway
to the
Stars

Palomar
Mountains
California

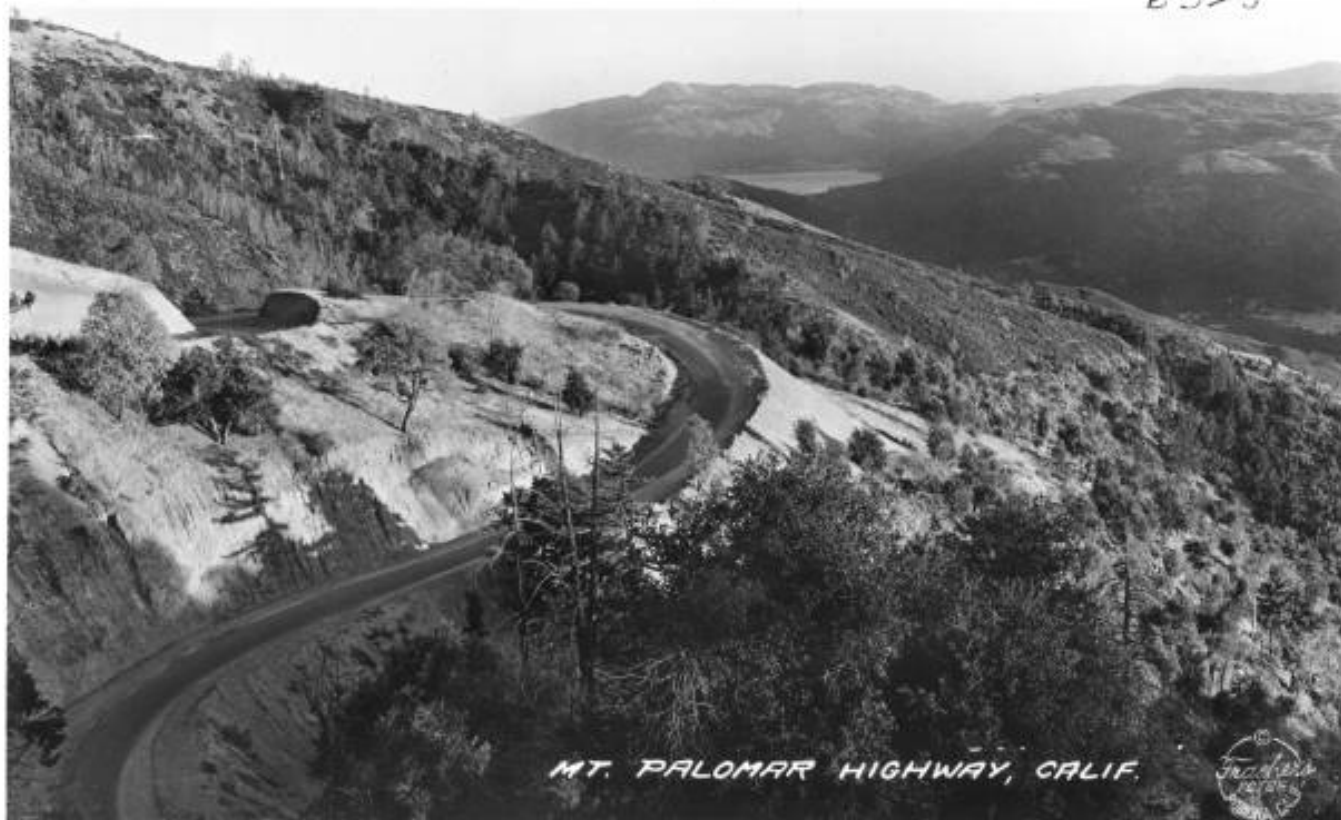


F-8000



Highway to the Stars - Palomar Mountains, California

F-7937



B328

MT. PALOMAR HIGHWAY, CALIF.





On the Highway to the Stars in Winter,
Palomar Mountains, California.





Postmark June 23, 1947

Palomar Observatory (Hales) Containing the Largest (200 Inch) Telescope in the World



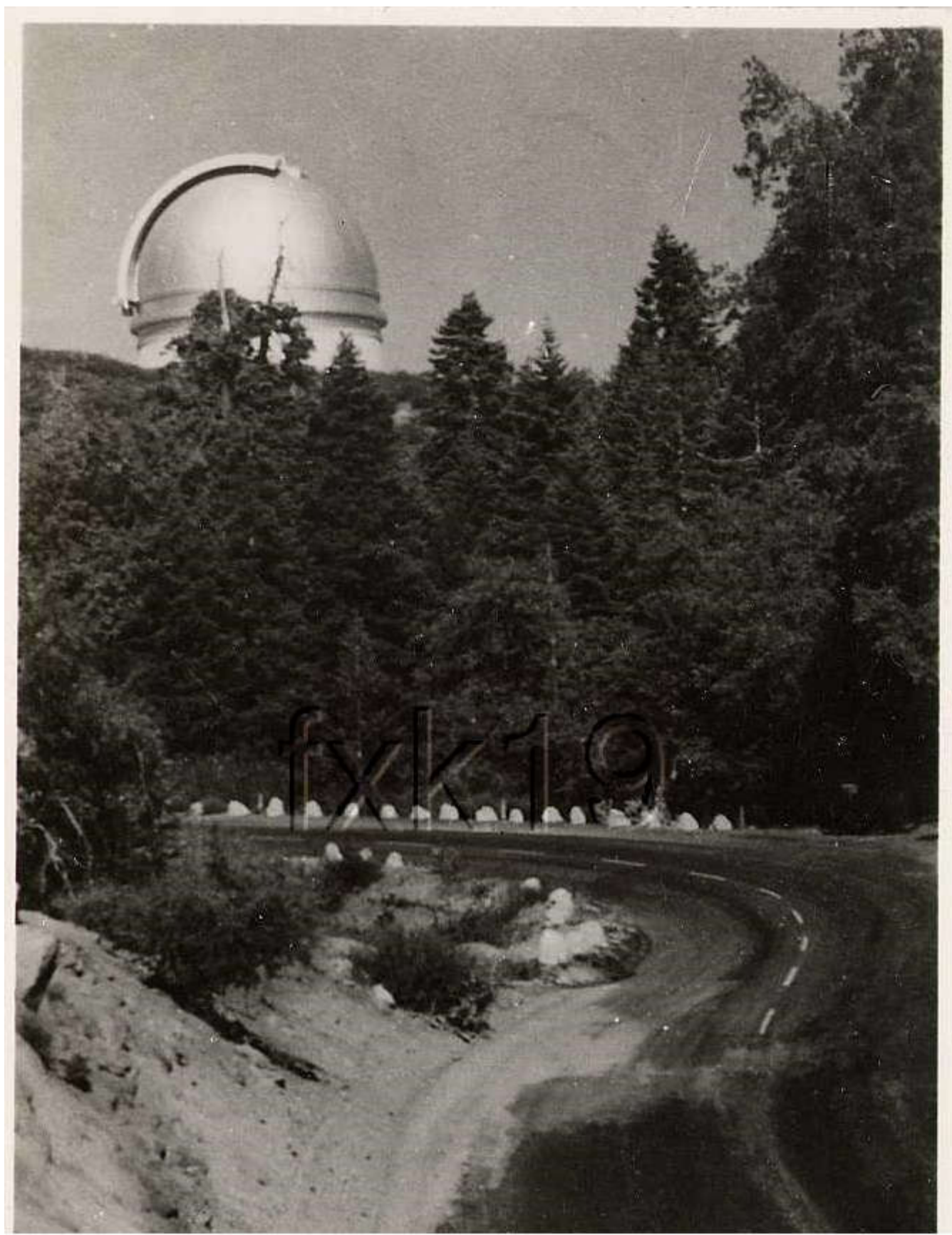


Highway to the Stars - Palomar Mountains, California

F-7941



Postmark March 11, 1944





Palomar Mountain
"Highway to the Stars"



63
"Highway to the Stars"
Palomar Mt. Calif.

Highway to the Stars. A View of the County Highway Leading to the Palomar Observatory (Hales)



Palomar
Observatory

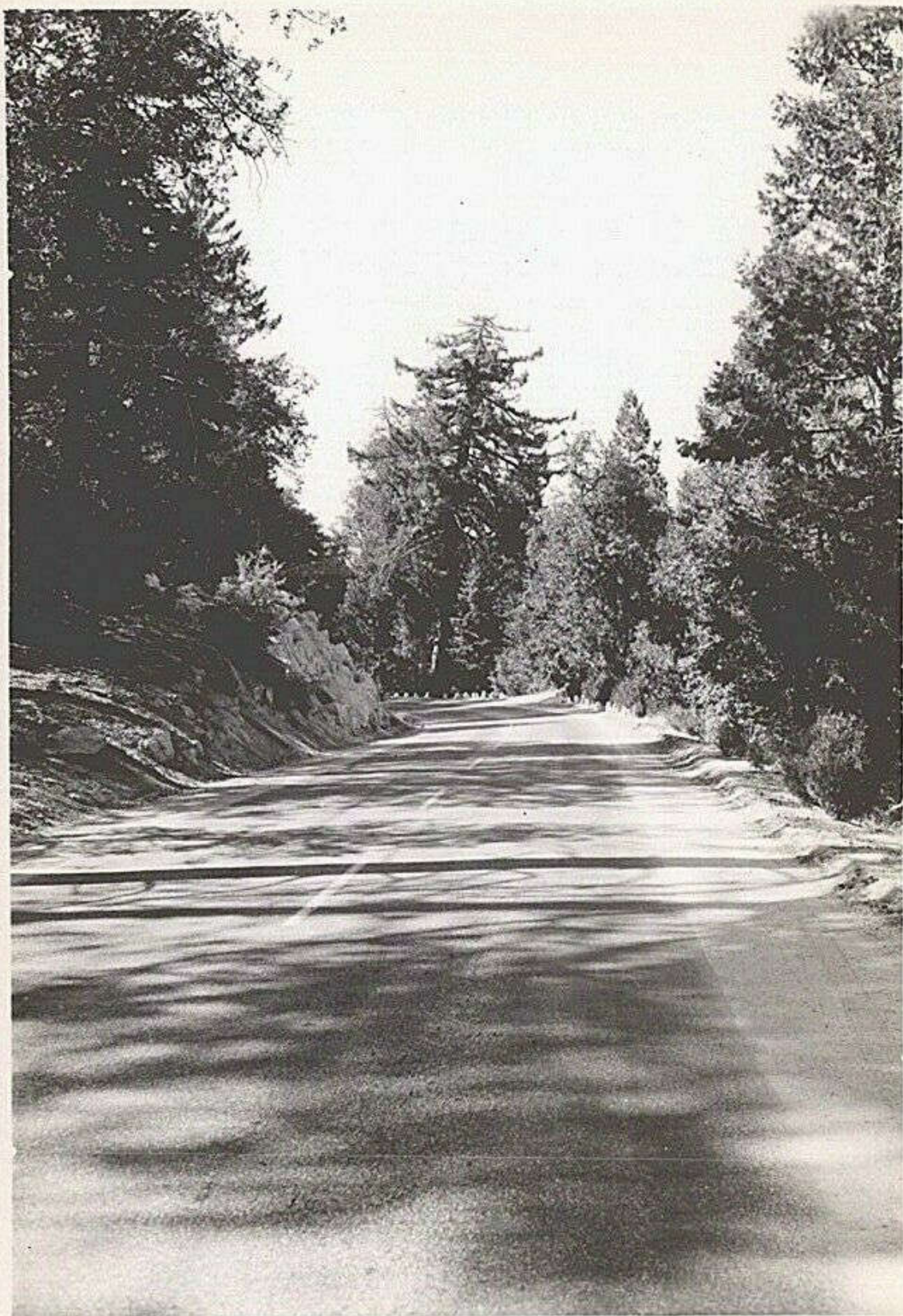
Containing
the Largest
Telescope
in the
World

Palomar
Mountains
California



F-7656

October 17, 1952 postmark



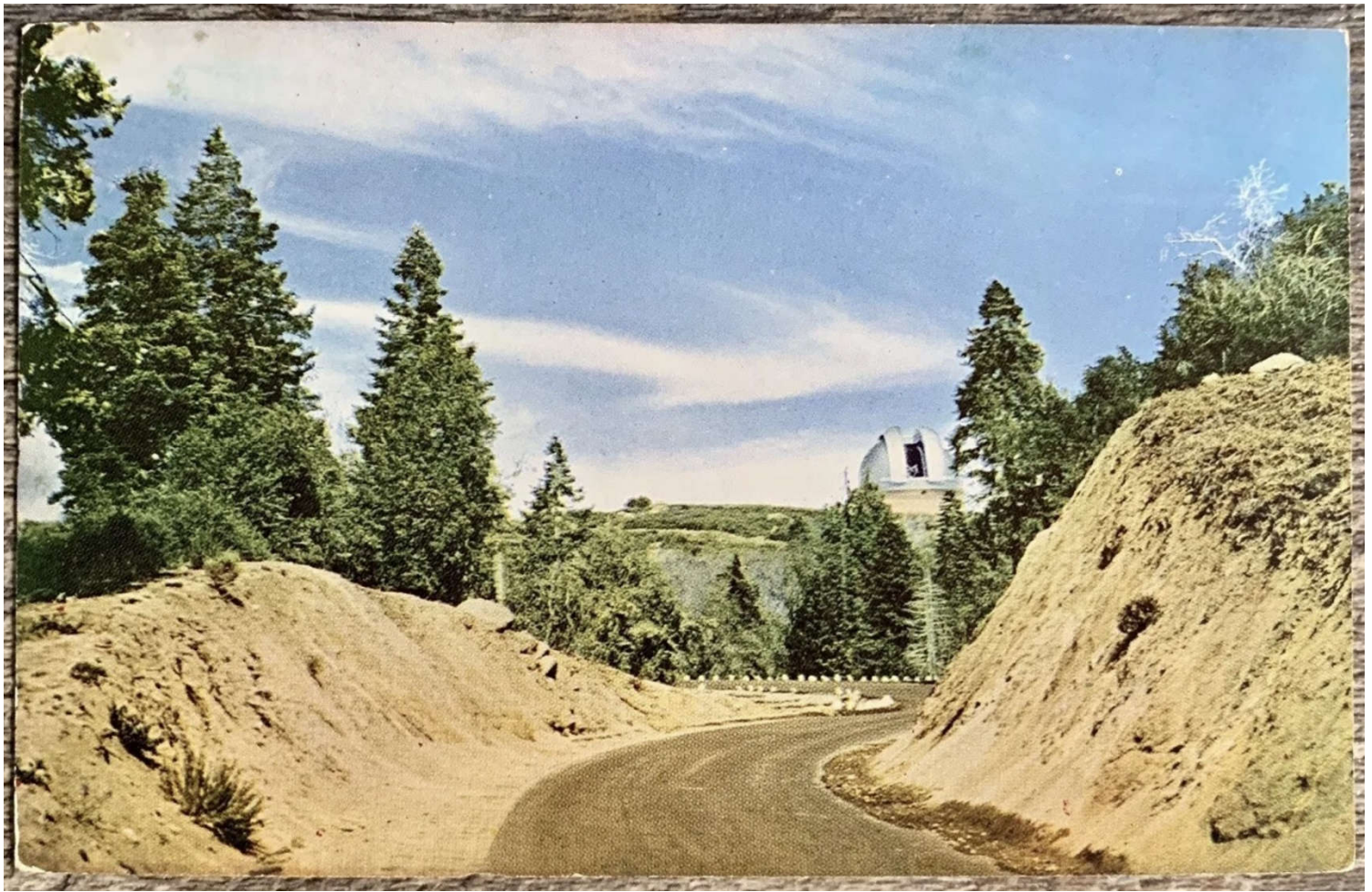
Highway to the Stars - Palomar Mountains, California

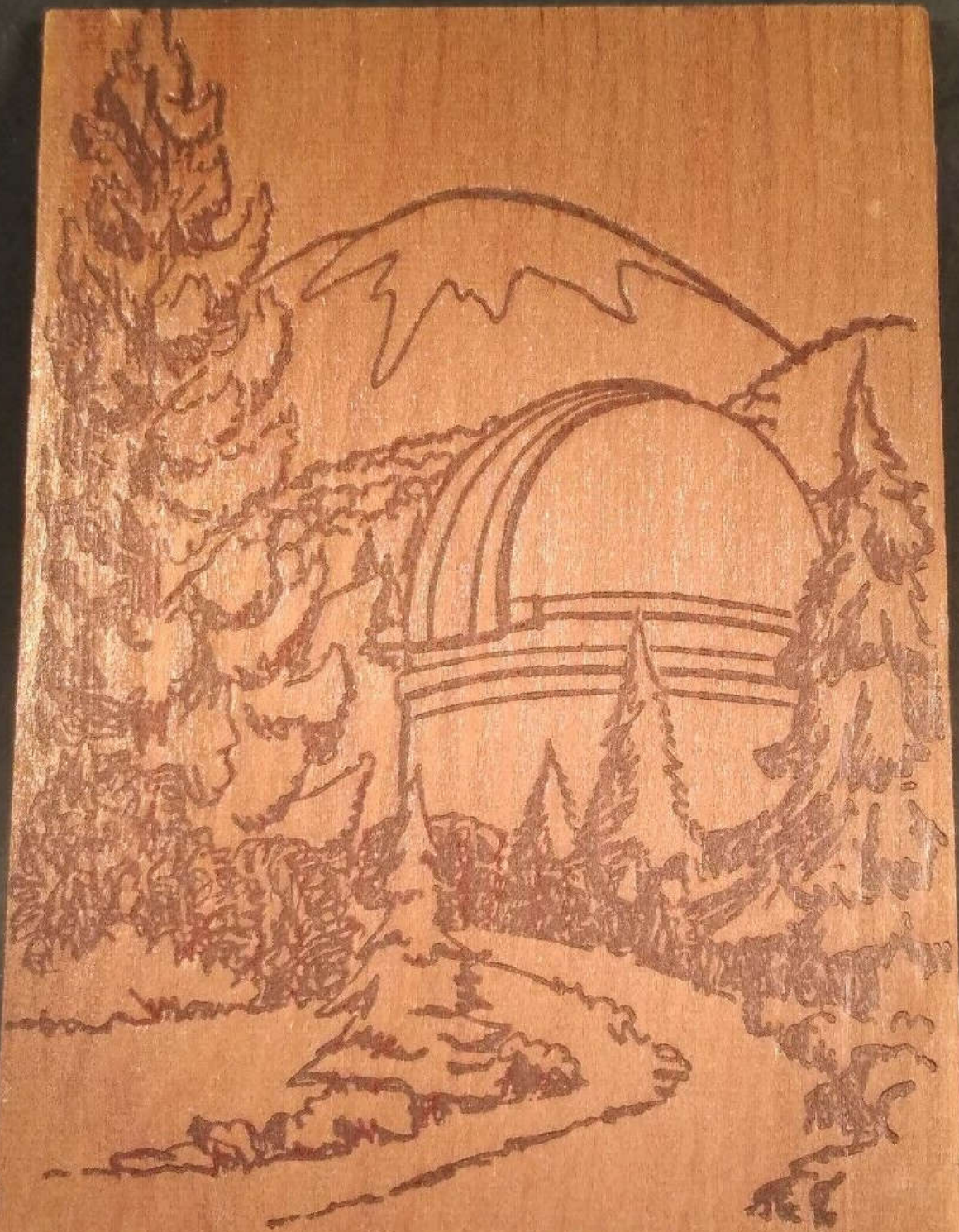


F-8055



April 11, 1963 postmark





PALOMAR MTN, CA.

HAND
CANCEL

Stamp

To/

Rincon Springs Store & Cafe

at the base of Palomar Mountain

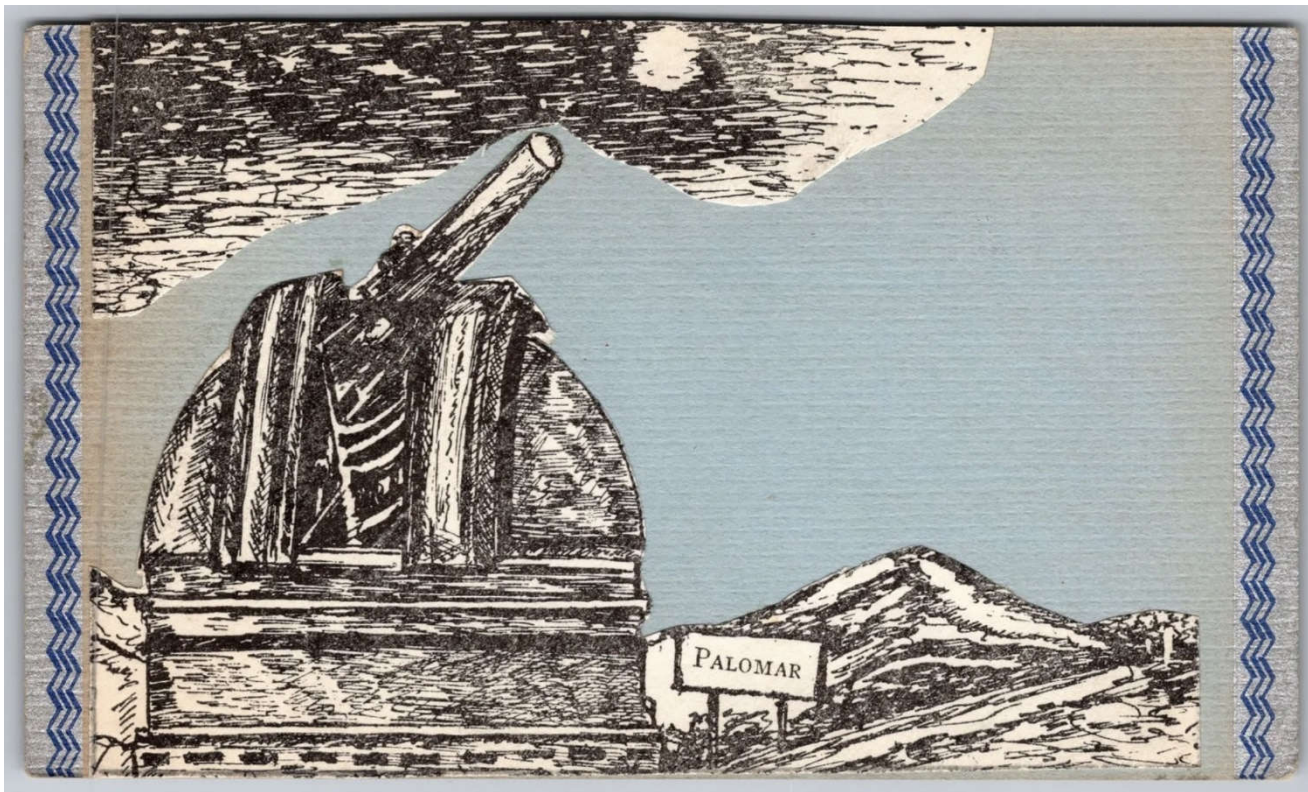


RINCON SPRINGS GENERAL STORE & CAFE,
ON THE HIGHWAY TO THE STARS,
AT THE BASE OF PALOMAR.





Telescope / Observatory

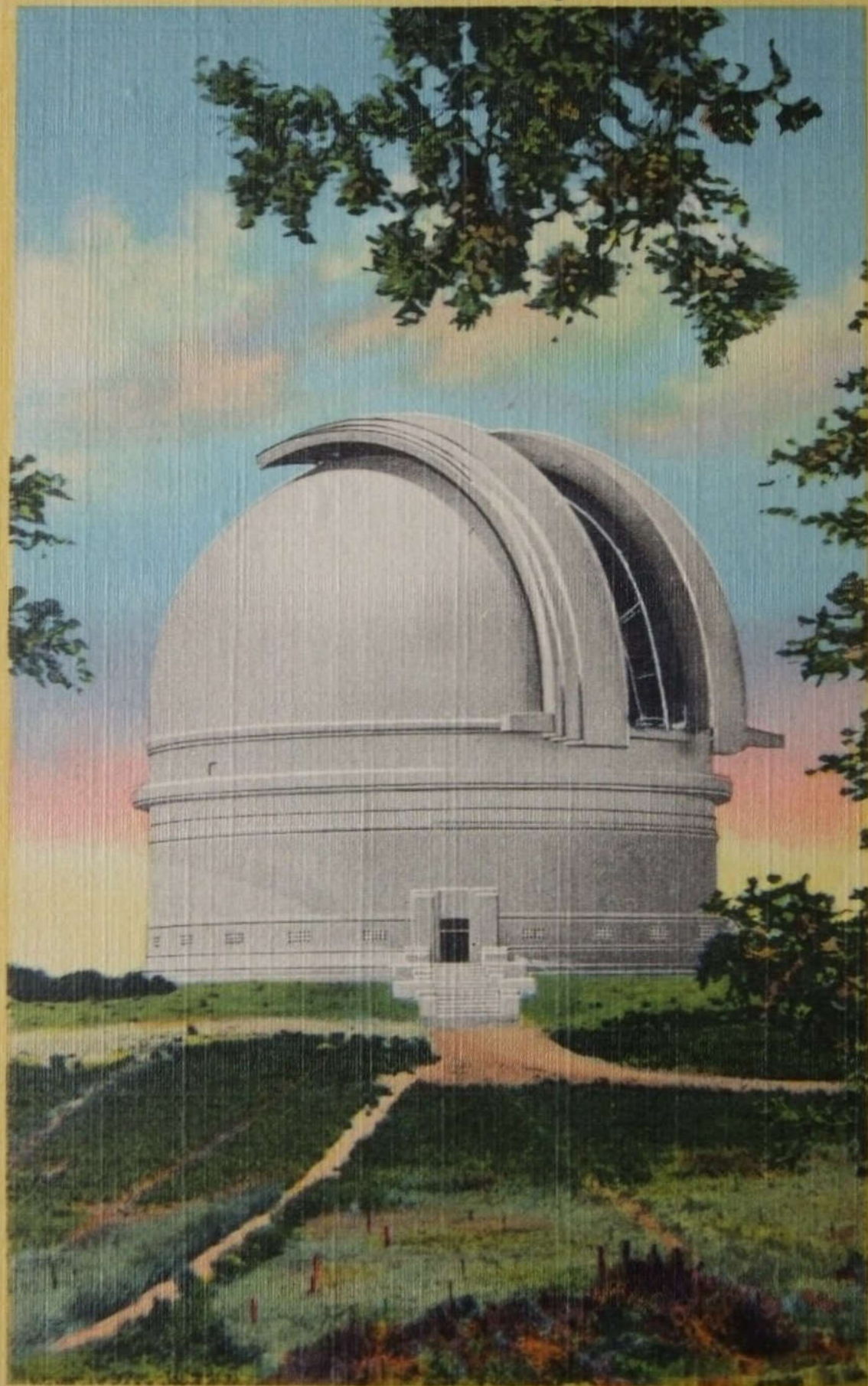


Postmark June 6, 1952



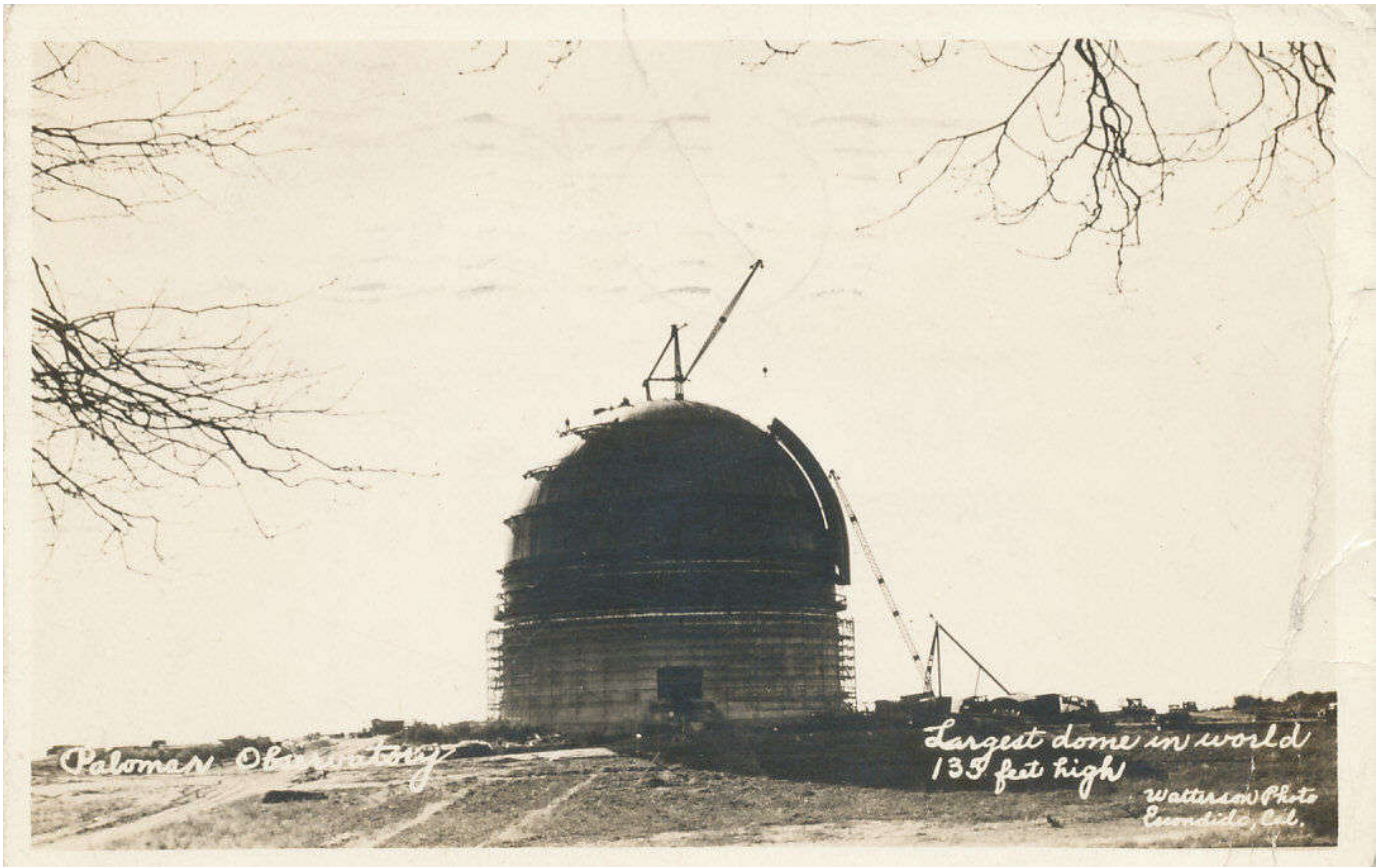
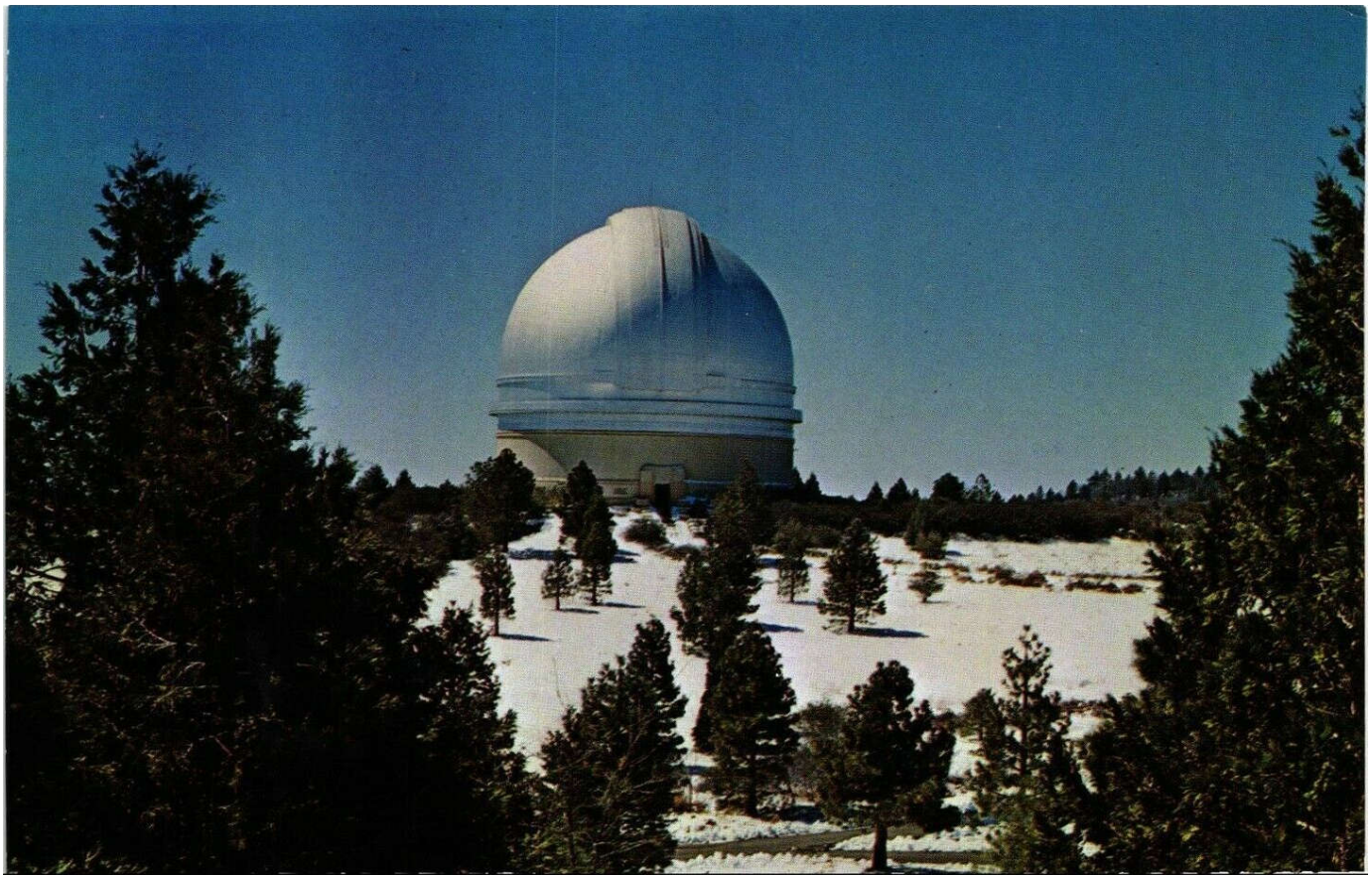
Postmark April 7, 1939

4581—Palomar Observatory, Palomar Mountain,



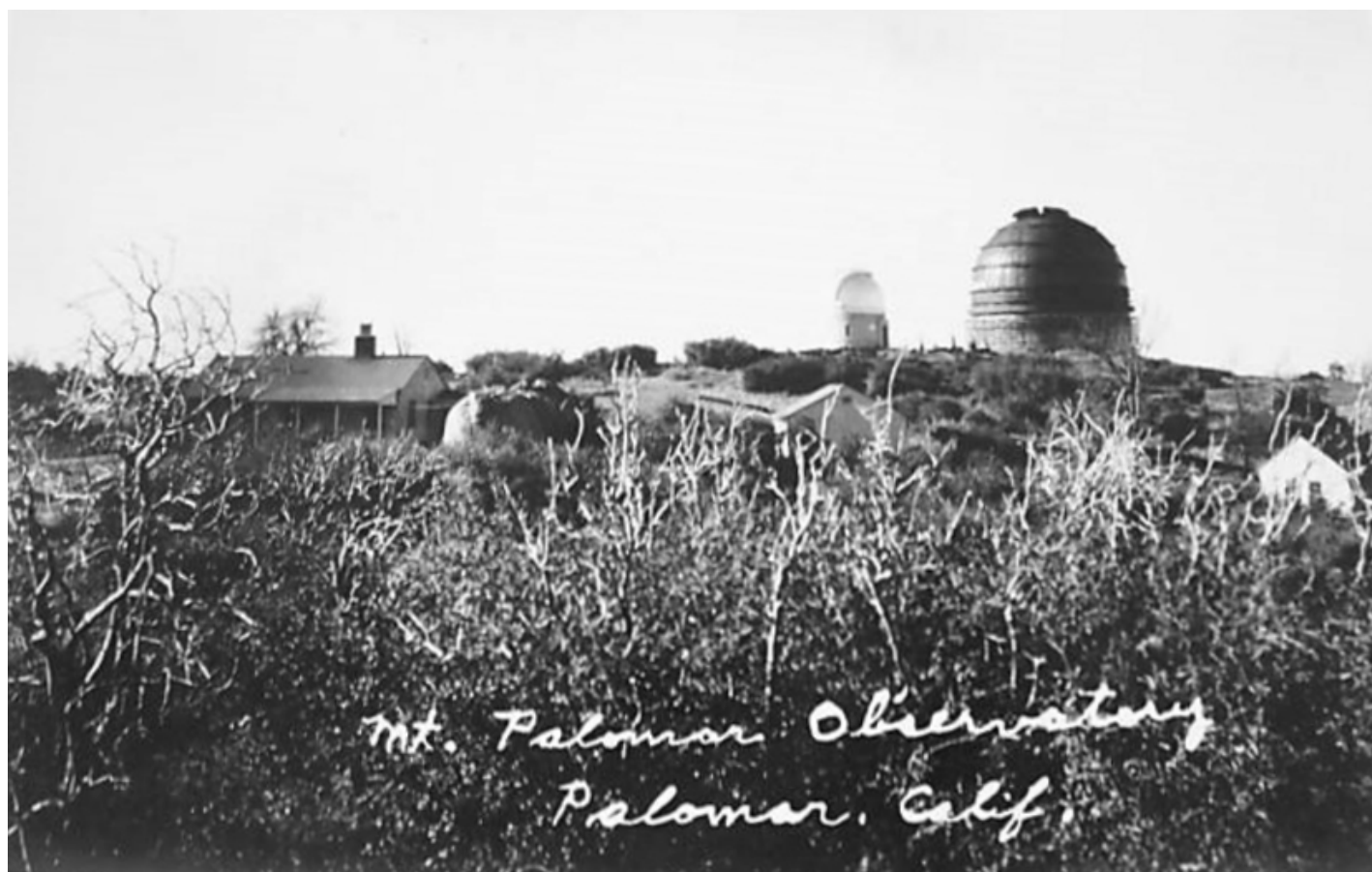
9A-H2258

San Diego County, California

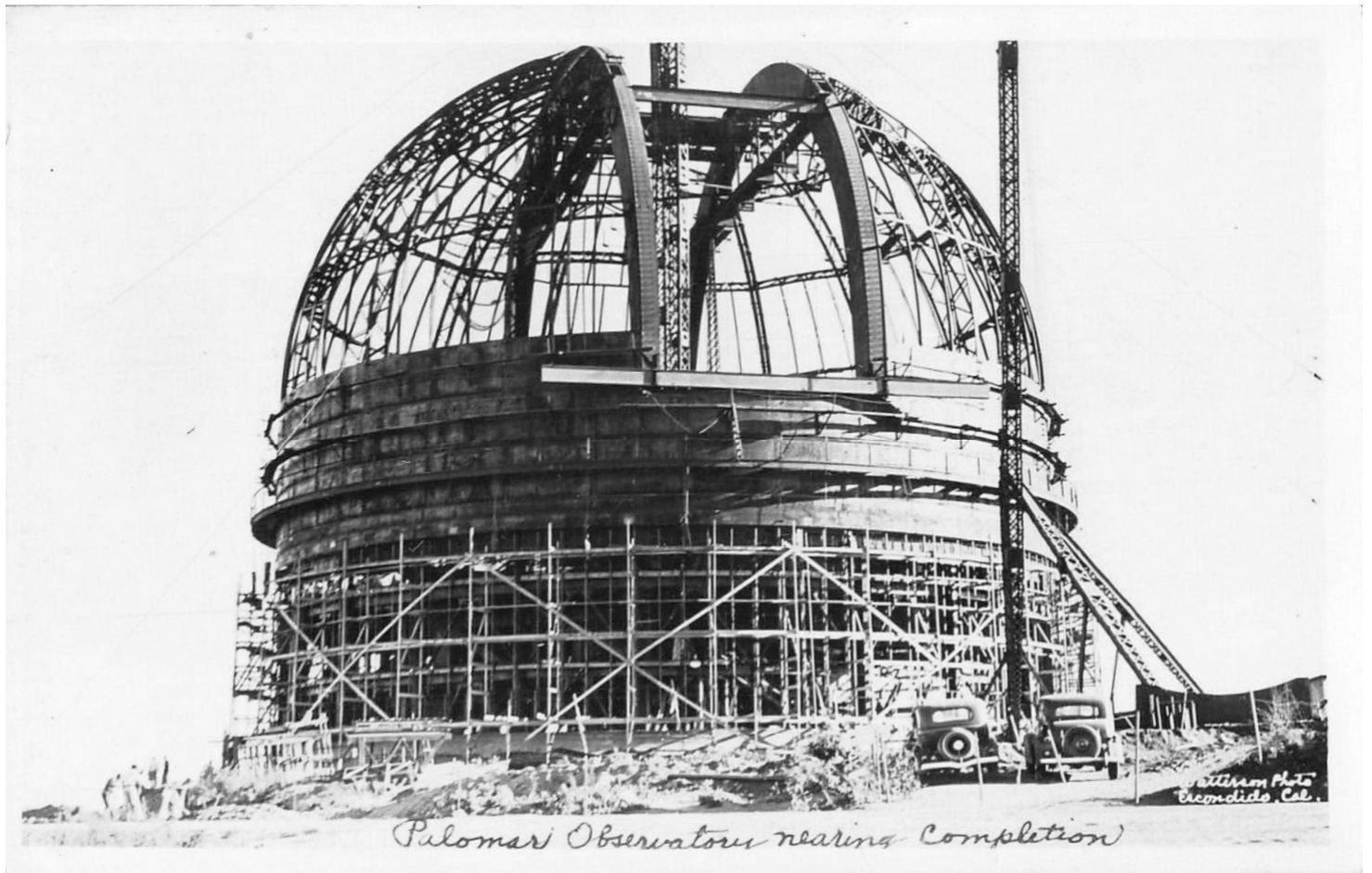
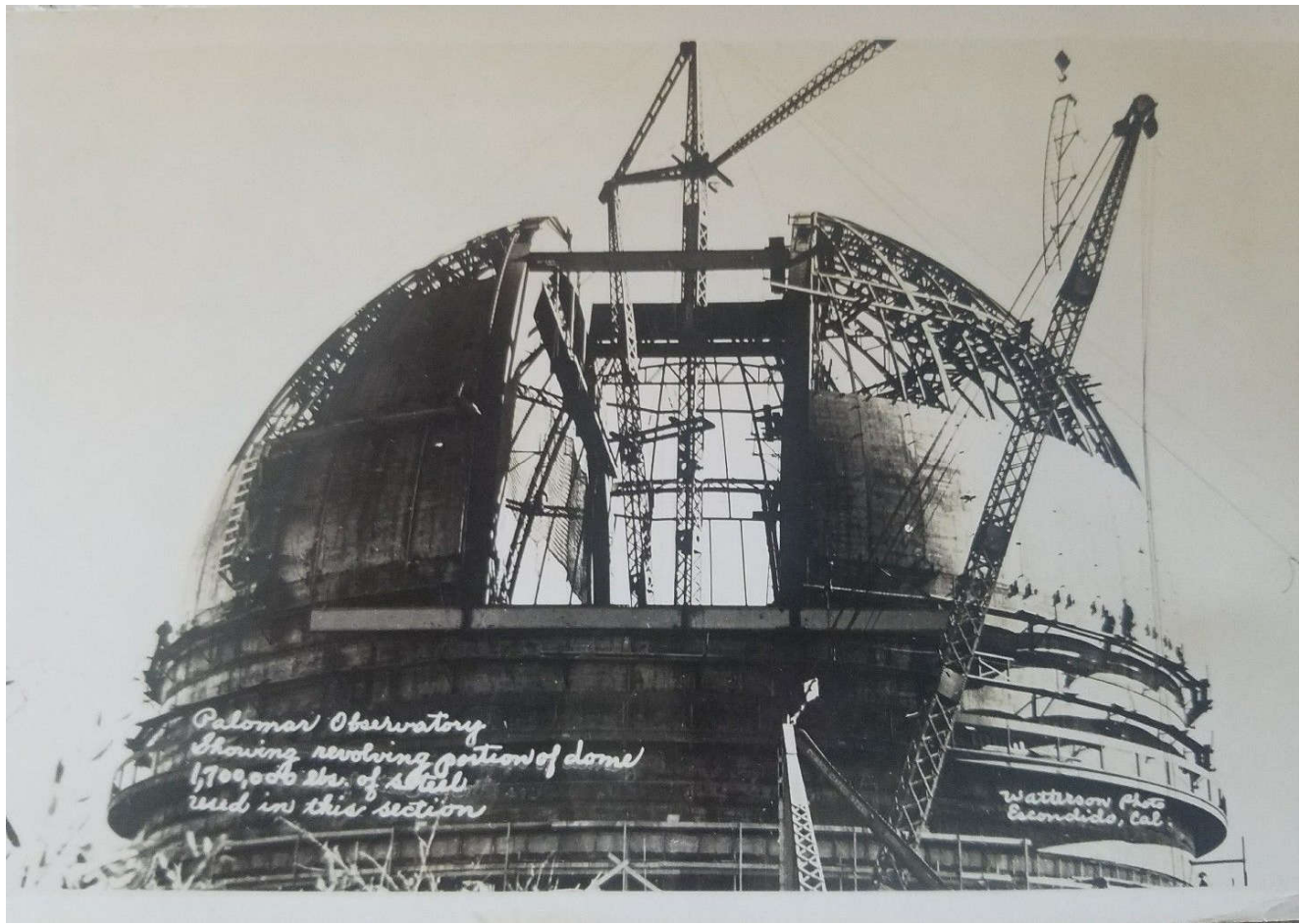


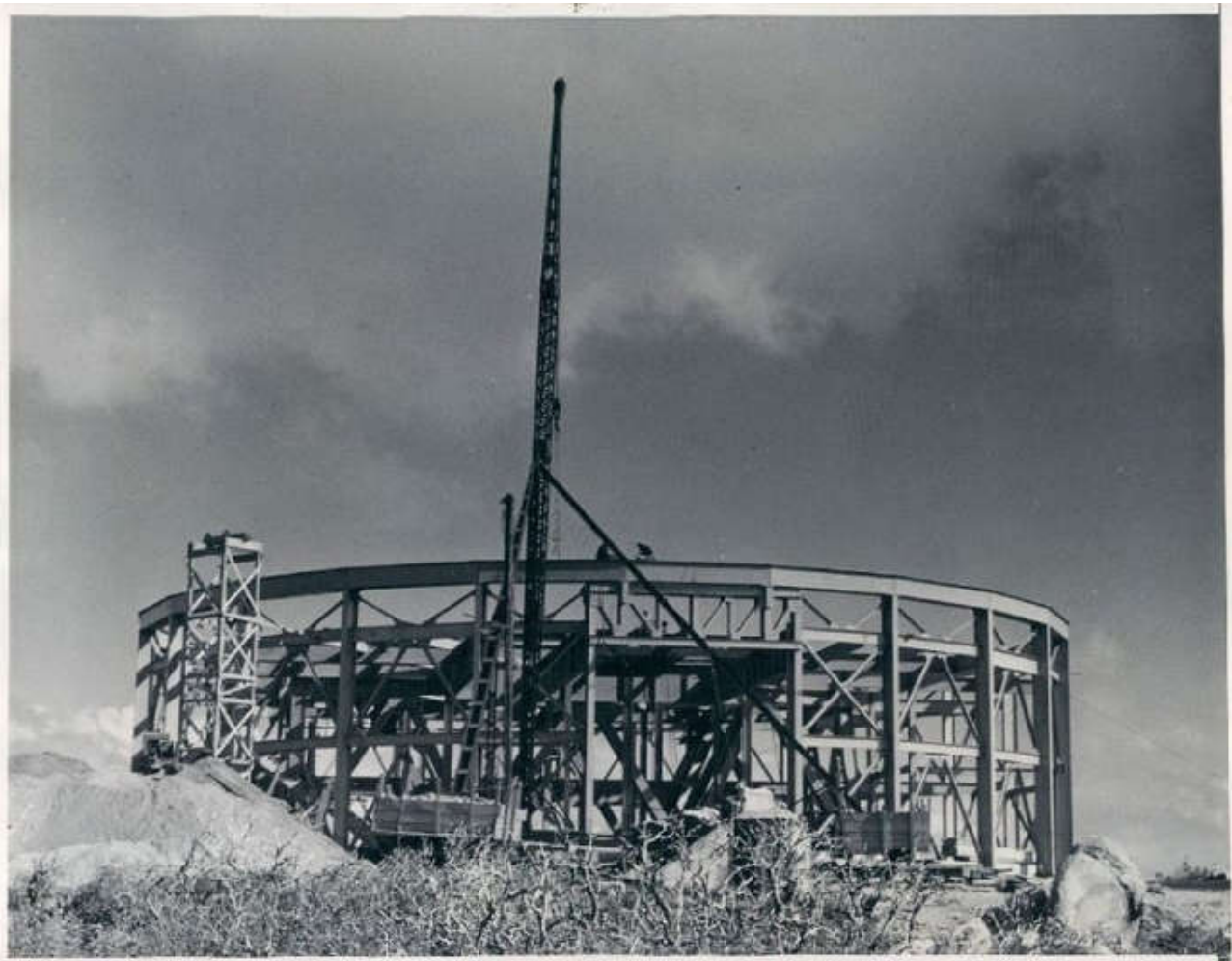


World's Largest telescope
in construction 15 minutes from
Valley Lodge Palomar Calif.



Mt. Palomar Observatory
Palomar, Calif.

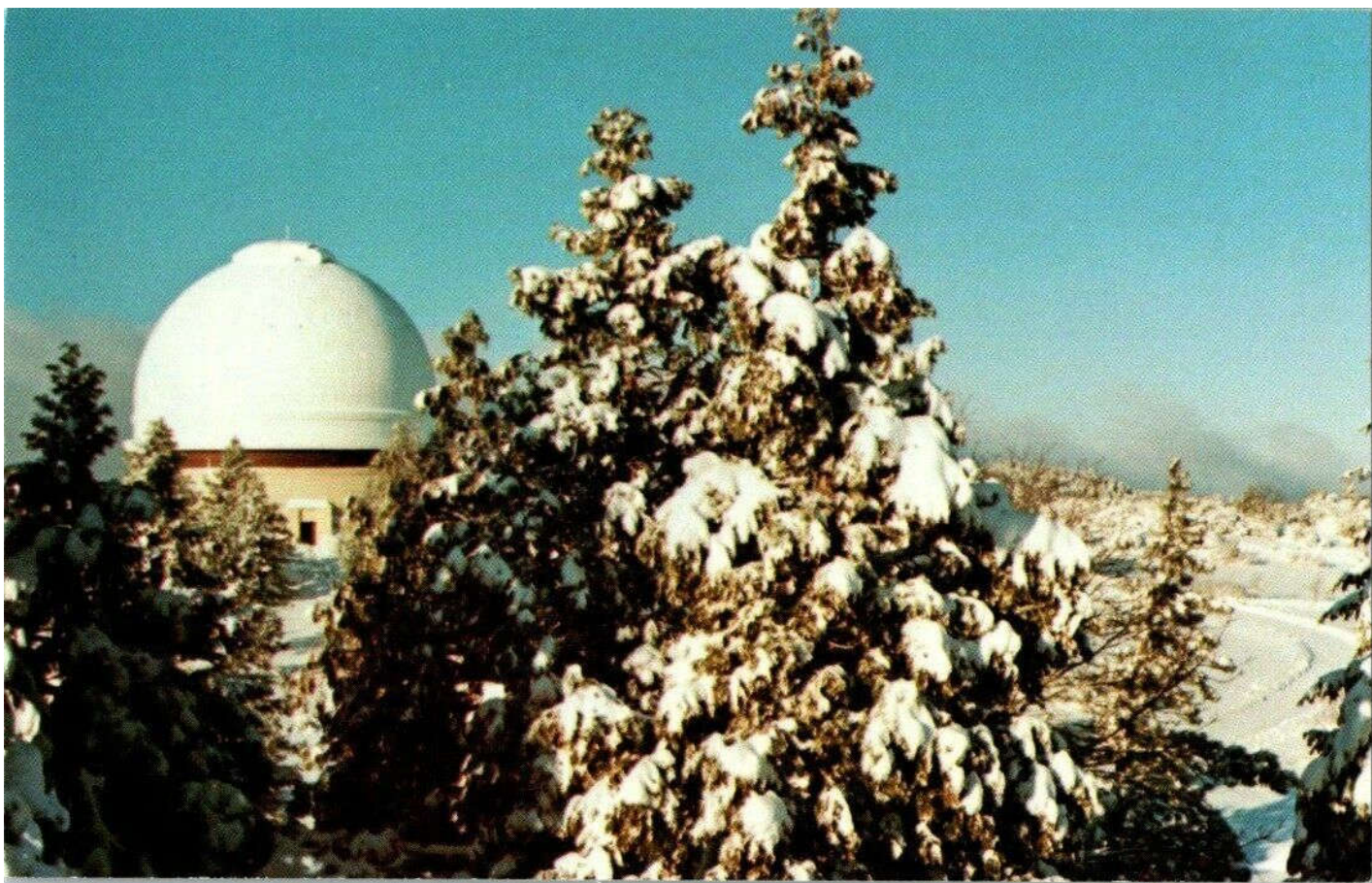
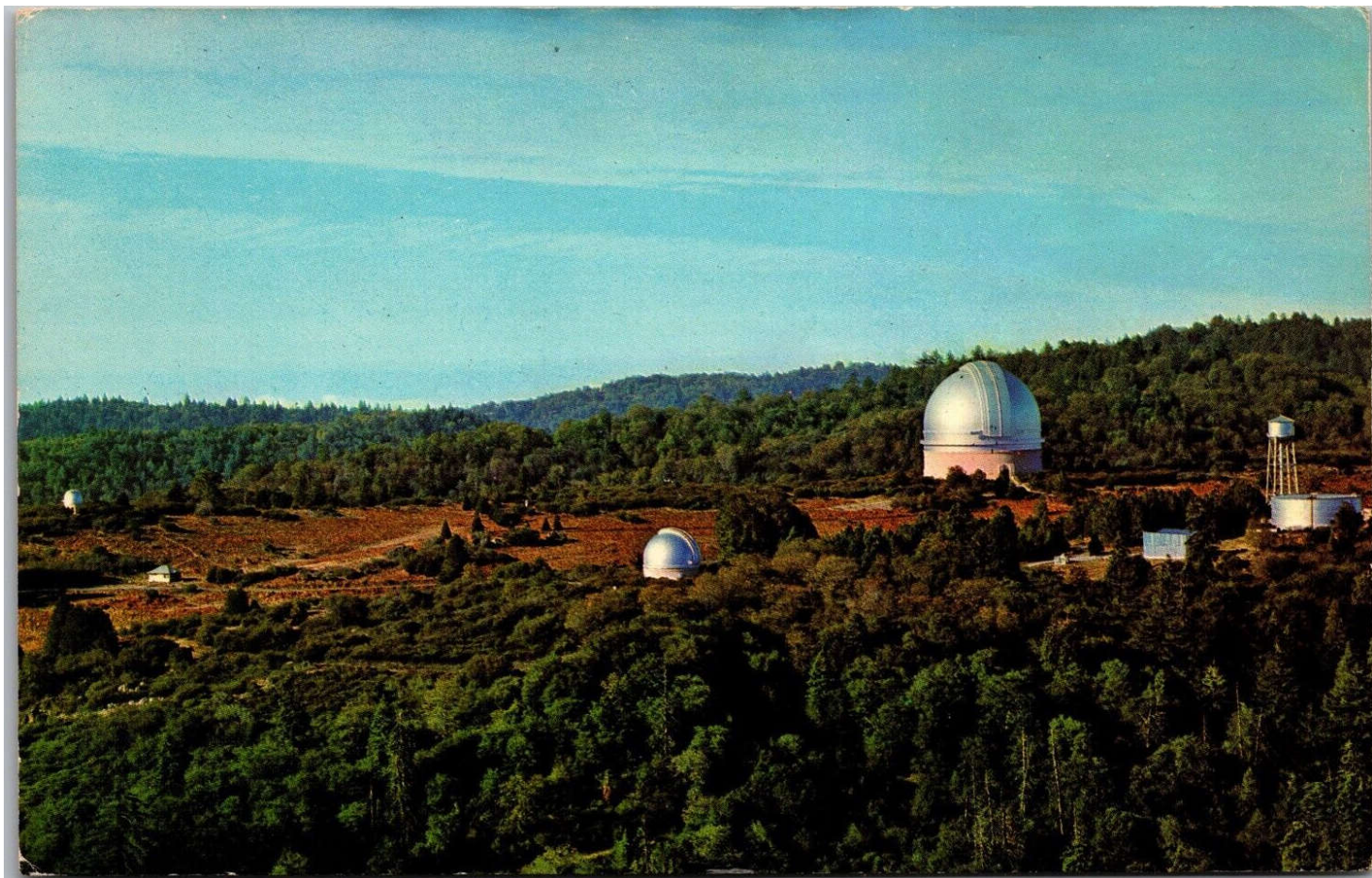


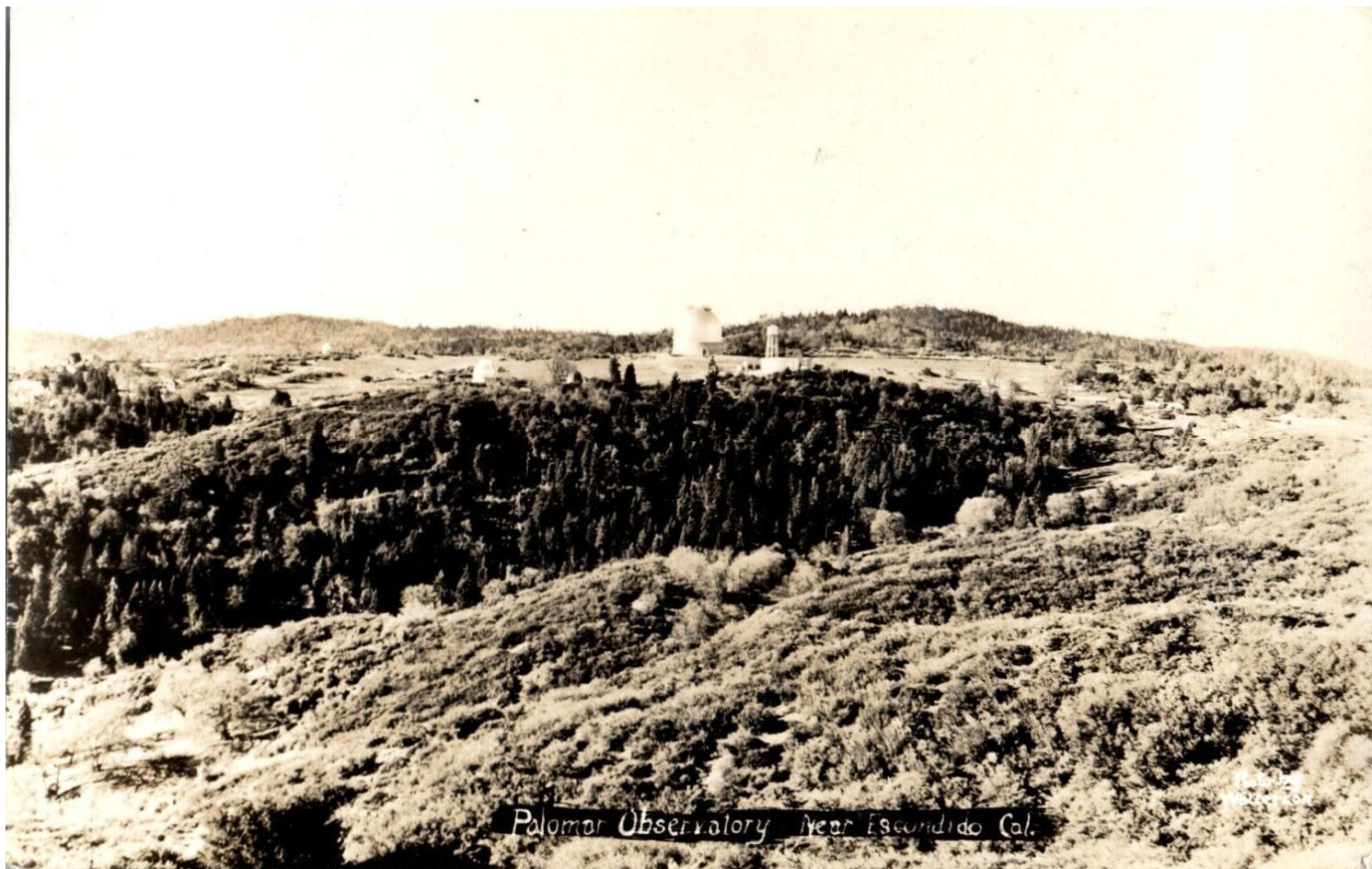


1936



1968



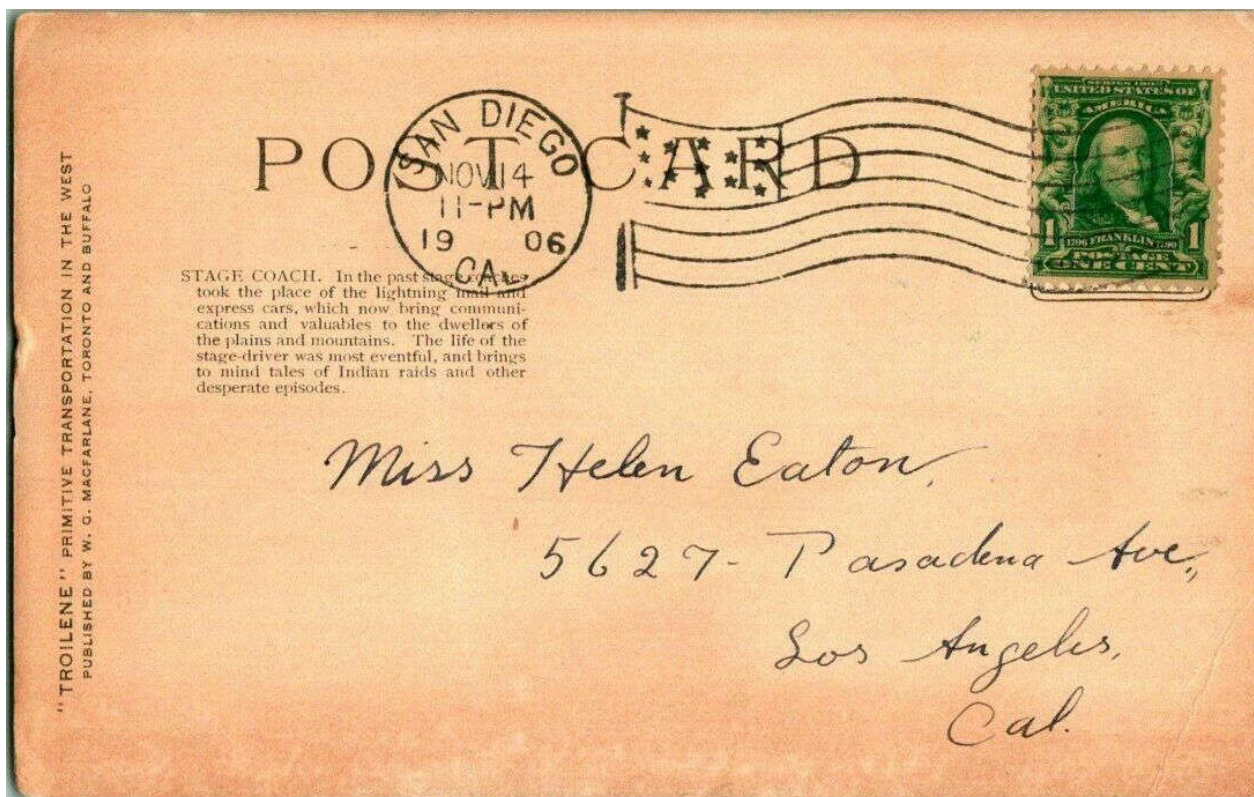


Postmark March 29, 1938

MISCELLANEOUS



Postmark November 14, 1906





"Bucky"

Palomar Mountains, California



F-7657



"Baby"
Lynx or Bobcat
PALOMAR MT. CALIFORNIA E 4415



California Forestry Department Fire Lookout
Baucher Hill, Palomar Mountains

F-9176

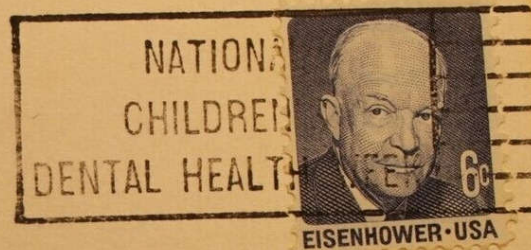


PALOMAR BAPTIST CAMP
Palomar Mountain, California

A wonderful setting for Bible Study and Devotions
"Where the pines and stars show the glory of God".

Great Christian camping — year around. 30 JAN 1971
riding — Hiking — Fishing — Archery — Riflery —
Swimming — Crafts — Nature Study.

Color Photo by Terry Hawley



POST CARD

Address

Mrs Osa Gillespie
5612 Winton St
Dallas, Texas

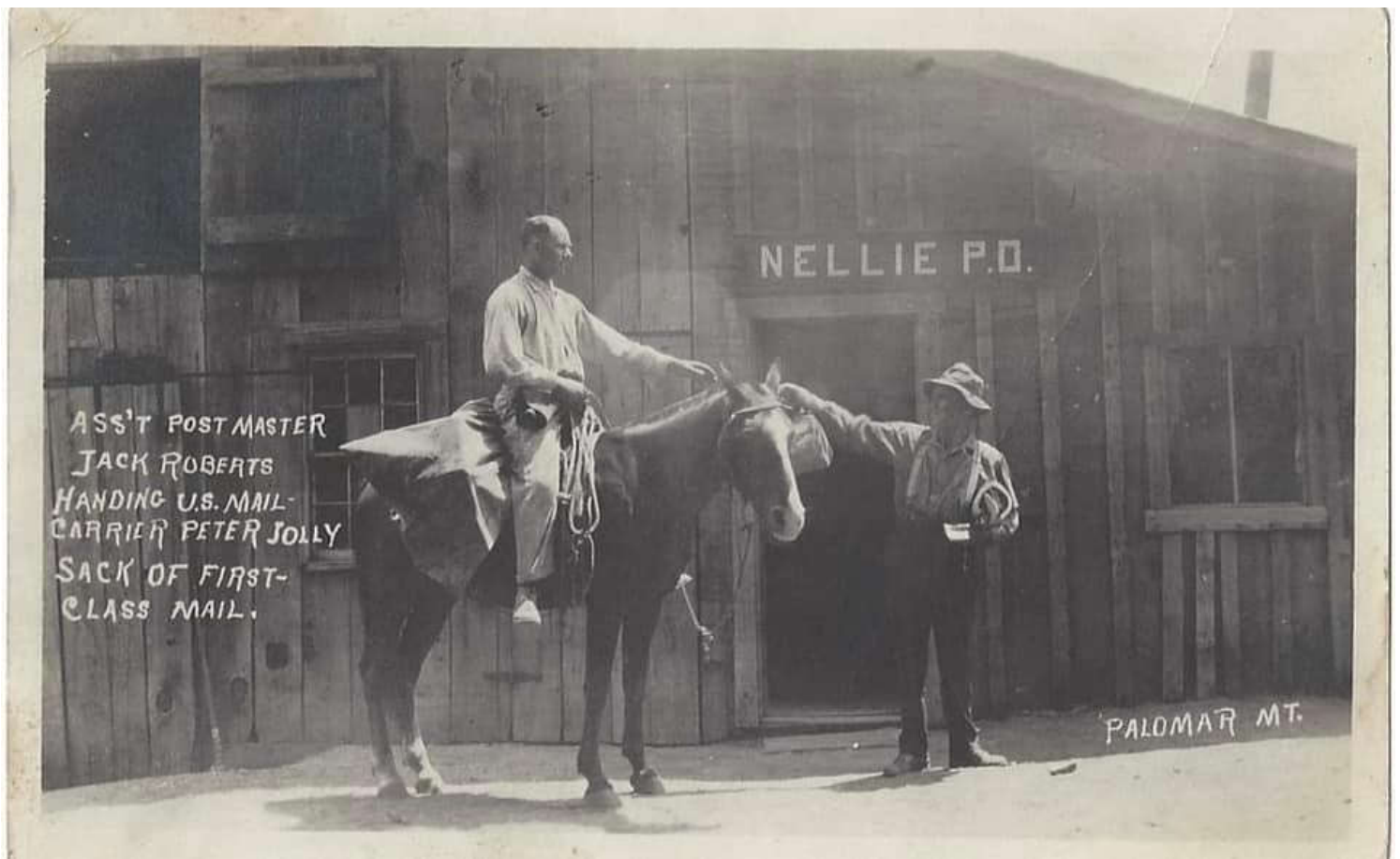
Hell: Hope all are well.
The Davis clan is fine.
Say, you were the party
that owed me a letter.
anyway, was glad to
hear from you. I'm
mailing a small B'day
package on Mon. Do write

6011

Columbia Wholesale Supply, 11401 Chandler, North Hollywood, Calif. 119908

Love Loretta

Published and Distributed by Columbia



c1918-c1920 when Elsie Roberts was postmaster and before post office name was changed to Palomar Mountain. Jolley is correct spelling.