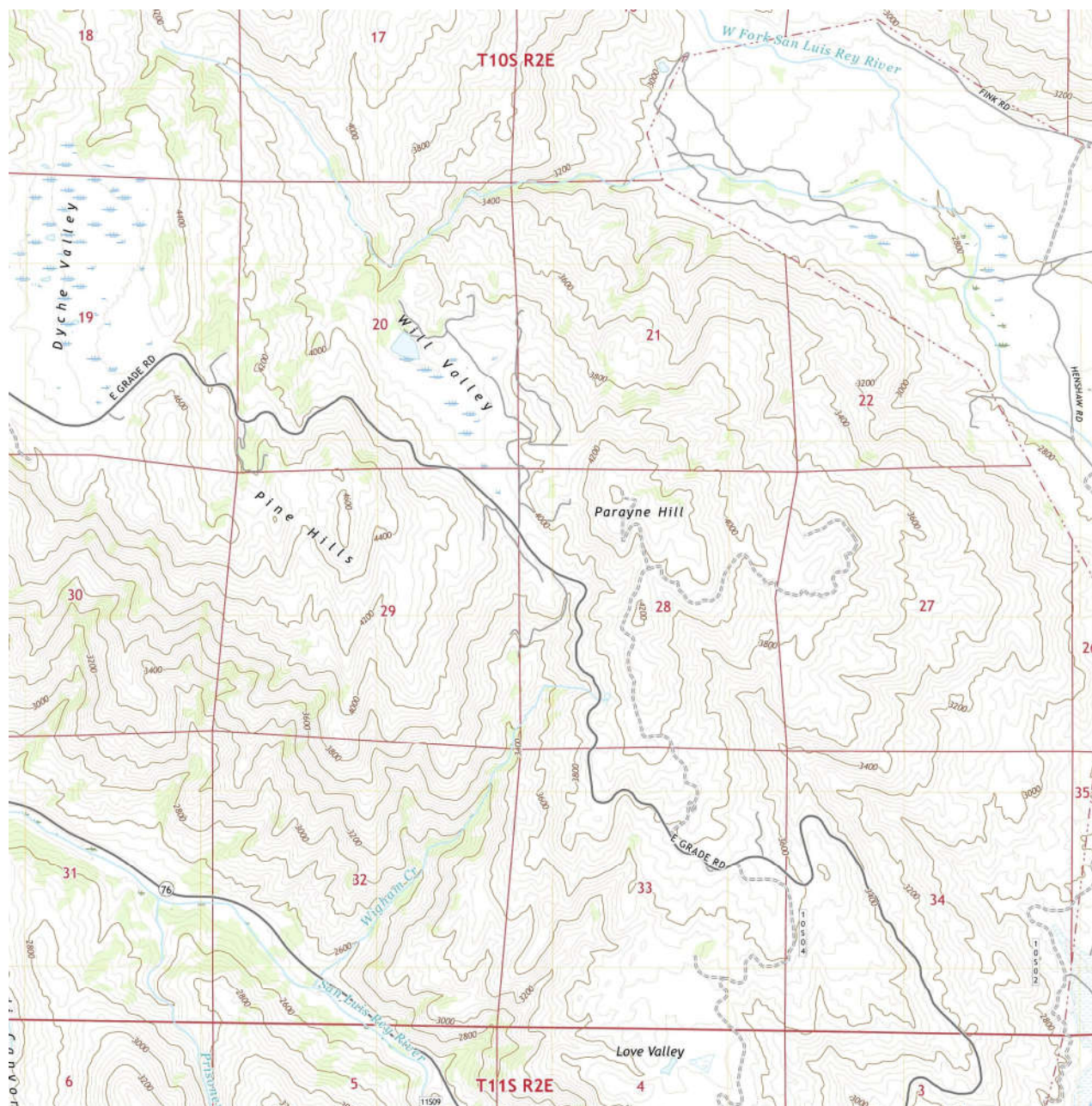


# The Peyregnes and Parayne Hill of Palomar Mountain

## Peter Brueggeman 2024

Uncited information and images are from ancestry.com, findagrave.com, and www.familysearch.org. Property records were not searched. Property information comes from the Bureau of Land Management General Land Office Records database and from newspaper notices.

Parayne Hill is located southeast of Will Valley and north of Love Valley on Palomar Mountain.



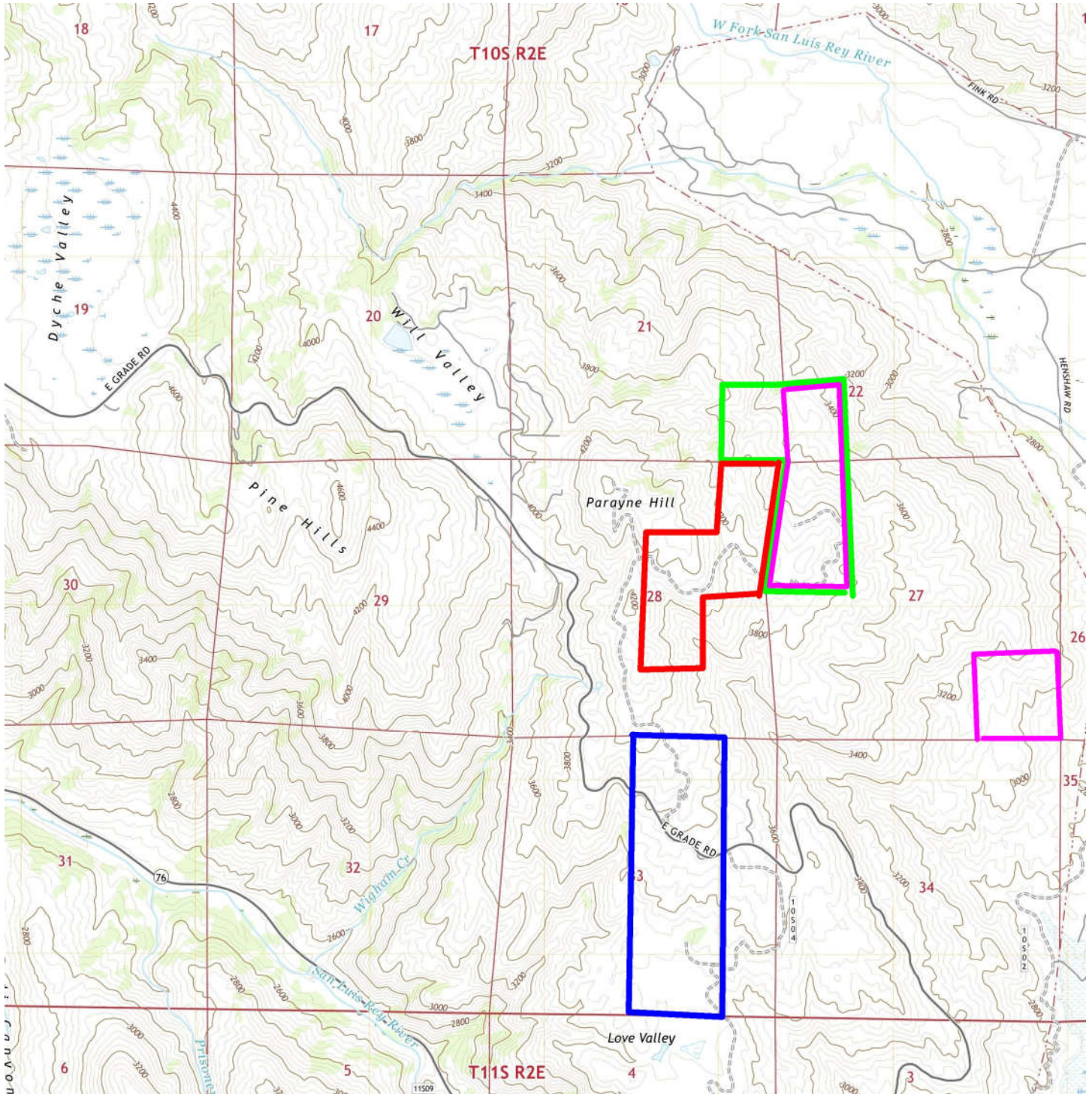
**Parayne Hill located in middle of 2021 U.S.G.S. Palomar Observatory map**

Parayne Hill is a misspelling of Peyregne and refers to the Peyregne twin brothers, Jean Bertrand and Jean Louis, and a relative, William Louis, who owned land in its immediate area. The name Parayne Hill first appeared on the 1949 U.S.G.S Palomar Observatory map; it did not appear on the 1939 U.S.G.S. Palomar Mountain map.



Parayne Hill is not alone on Palomar Mountain in having a geographical misspelling; Colb Valley near the Observatory is named after William Jasper Kolb.

Composite of Palomar Mountain land for the three Peyregnes from BLM General Land Office and newspaper records, on the 2021 Palomar Observatory map. There was probably more Peyregne land than this because San Diego County land records were not searched.





**Jean Bertrand Peyregne** with his wife Viviana Morel, c1871

Jean Bertrand Peyregne was born in France on December 19, 1828, alongside his twin brother Jean Louis Peyregne.

Bertrand Peyregne's gravestone differs and says he/they were born December 25, 1828.

In 1851, Bertrand Peyregne came to the U.S. via New Orleans and went on to become a gold miner in Sonora, California in 1855. He was in Siskiyou County at the time of the 1860 U.S. Census. His biography states that he found success as a miner for twelve years, and in 1867, he

moved to Los Angeles and engaged in buying and selling cattle [3]. In 1871, Bertrand Peyregne married Viviana Morel (aka Morrel or Morrell, born in San Buenaventura [Ventura], California on June 10, 1856 – died July 11, 1914) when he was living in San Fernando working as a stockraiser [3]. Bertrand and Viviana Peyregne moved to Riverside County in 1874, homesteading in Leon near Menifee, raising sheep [3]. The Great Register of San Diego County for 1880 lists Bertrand Peyregne with occupation sheep owner living in Temecula; he became a naturalized citizen in Calaveras County in 1865 or in Los Angeles in 1871 and registered to vote in 1880. In 1883, Bertrand Peyregne filed a preemption claim on 160 acres on Palomar Mountain (newspaper notice published on February 1, 1883), and it is recorded as being sold (not homesteaded) to Bertrand Peyregne on June 12, 1885 [1,4]. By 1913, Bertrand and Viviana Peyregne had moved to Redondo Beach and listed their Menifee ranch for sale [6]. His wife died in 1914, and Bertrand Peyregne was living in Stockton in 1917. He died April 13, 1919, and is buried in Inglewood, Los Angeles County.

### **Jean Louis Peyregne**

Jean Louis Peyregne was born in France on December 19, 1828, alongside his twin brother Jean Bertrand Peyregne. The Great Register of San Diego County for 1880 lists Luis Peyregne with occupation sheep raiser living in Temecula; he became a naturalized citizen in San Diego County in 1875 and registered to vote in 1880. Louis Peyregne was living in Temecula in the 1880 U.S. Census with occupation hostler (a man employed to look after the horses of people staying at an inn). In 1883, Louis Peyregne filed a preemption claim on 160 acres on Palomar Mountain (newspaper notice published on February 1, 1883) and he proved up on July 9, 1889 [1,4]. In March



1885, the San Diego Union published legal notices of Jefferson Cook's preemption claim on his land proving continuous residence and cultivation, with L. Peyregne (Jean Louis Peyregne) as one of the witnesses [8].

Edward Davis writes [7]:

Another Frenchman Louis Peyregne, raised sheep at Meniffee and had a band of several hundred sheep. All perished by drought. He then worked for Louis Wolf at Little Temecula Ranch for six years, saved his money, bought a bunch of cattle from Castro, and brought them first to Love Valley and later to a valley below the Fink place. I remember Louis, a tall raw-boned Frenchman, who could only talk broken English, because he used to come to Gedney's store at Mesa Grande to get shoes he had ordered months before. His feet were so large his shoes had to be built for him once a year: no factory shoes for him. I have heard it said, when Louis came to Mesa Grande for supplies at the store near the schoolhouse, the teacher would let the children out to run over and see Louis' big feet.

Gedney's store at Mesa Grande is James Edgar Gedney. Davis spelled it Meniffoo and Pereen. Davis said Louis Wolff at Pauma Ranch. Louis Wolf of Temecula purchased the 2283-acre Little Temecula Ranch in 1870 and was not affiliated with Pauma Ranch.

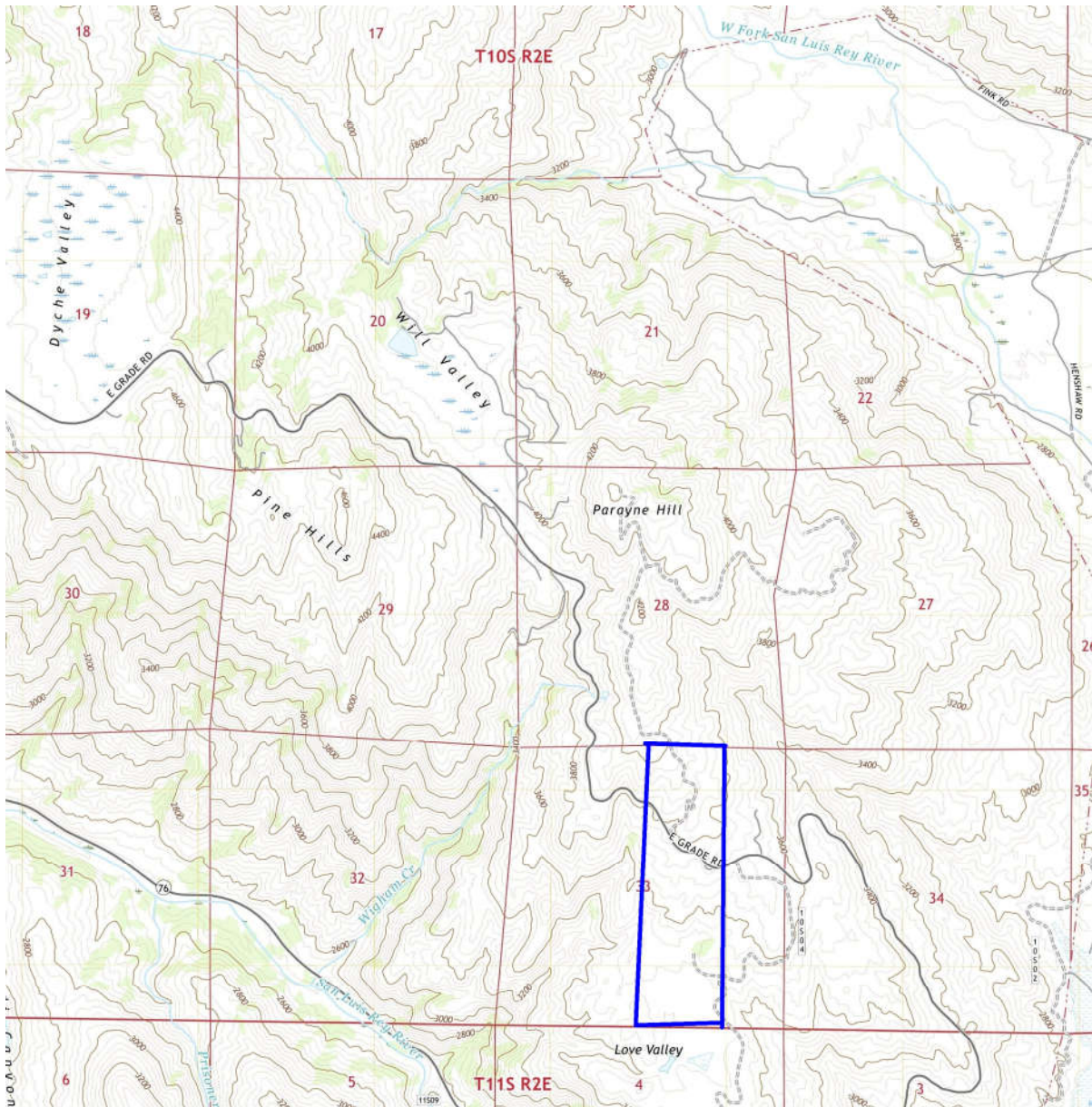
Louis Peyregne died in 1893 perhaps on Palomar Mountain, or in Temecula.

## **William Louis Peyregne**

William Louis Peyregne was undoubtedly a relative and acquired land for the Peyregne enterprise on Palomar; he purchased 160 acres on Palomar Mountain adjacent to his relatives that was recorded on July 30, 1891 [1]. William Louis Peyregne was born in Louisiana on January 25, 1860, and died in San Francisco on September 27, 1908; his father was born in France. William Louis Peyregne was living in New Orleans in 1886, working as a grocer, and was living in Los Angeles in 1893, working as a bartender. If he lived on Palomar Mountain, it was only for a year or two. He moved to Sacramento by 1896, and then was living in San Francisco by 1900.

## Bertrand Peyregne land on Palomar

In 1883, Bertrand Peyregne filed a preemption claim on 160 acres on Palomar Mountain (blue lines; newspaper notice published on February 1, 1883) [4]. The U.S Bureau of Land Management's General Land Office records it being sold by the U.S. Government (not homesteaded) to Bertrand Peyregne on June 12, 1885 [1].



**1885 Palomar land purchase by Bertrand Peyregne** [1] on the 2021 Palomar Observatory map

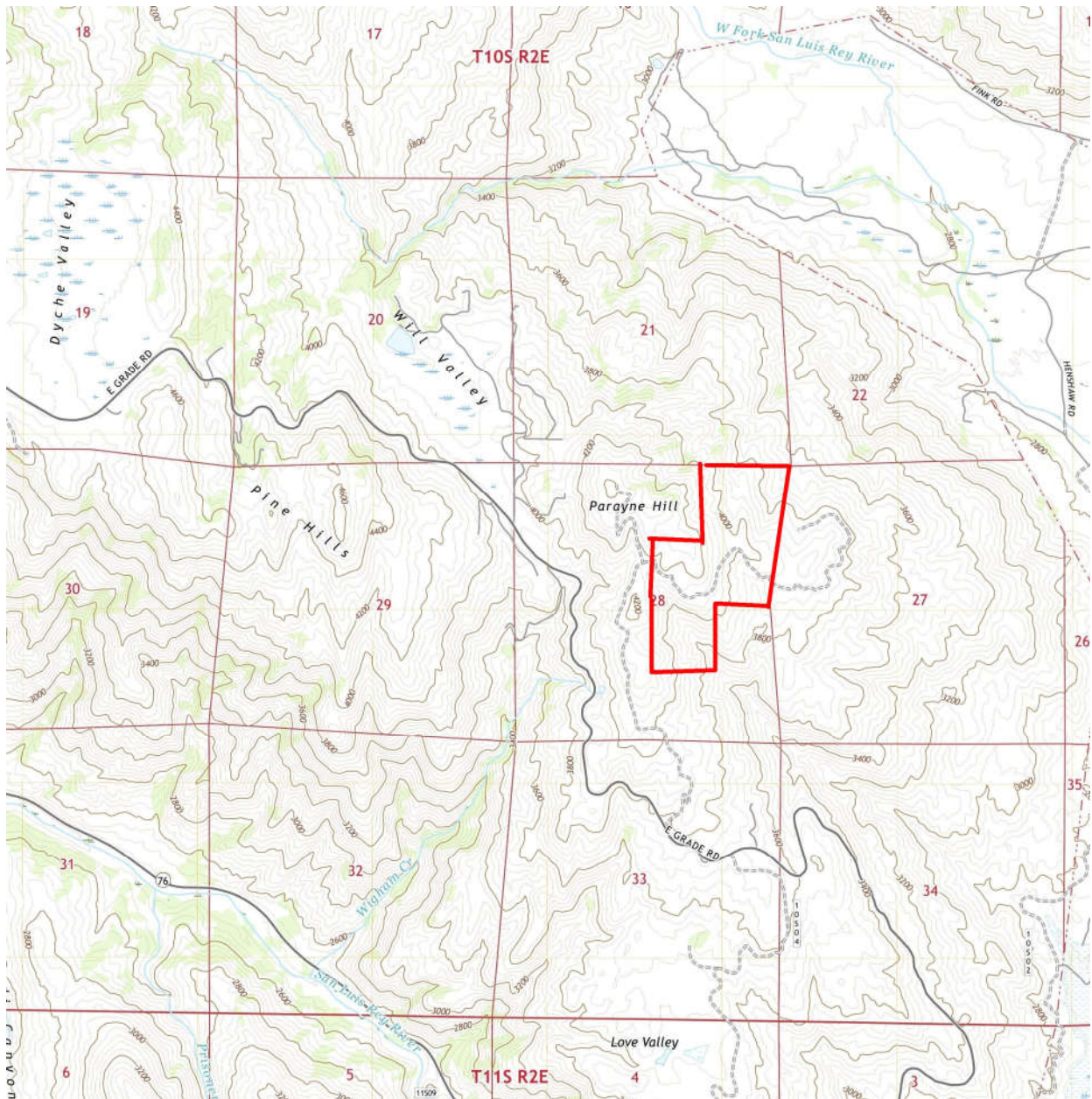
Previously on October 28, 1884, the San Diego Sun newspaper reported that Bertrand Peyregne sold John A. Love that same 160 acres for \$1,100 [2]. There's a period of several months between Peyregne's sale to Love and Peyregne's recorded purchase of that land; perhaps his purchase from the government had been in process well before its recorded date.

In 1886, Bertrand Peyregne started a homestead on 160 acres near Menifee, Riverside County, northwest of Palomar Mountain, and proved up on November 16, 1891 [1].



## Louis Peyregne land on Palomar

In 1883, Louis Peyregne filed a preemption claim on 160 acres on Palomar Mountain (red lines; newspaper notice published on February 1, 1883) and he proved up on July 9, 1889 [1,4].

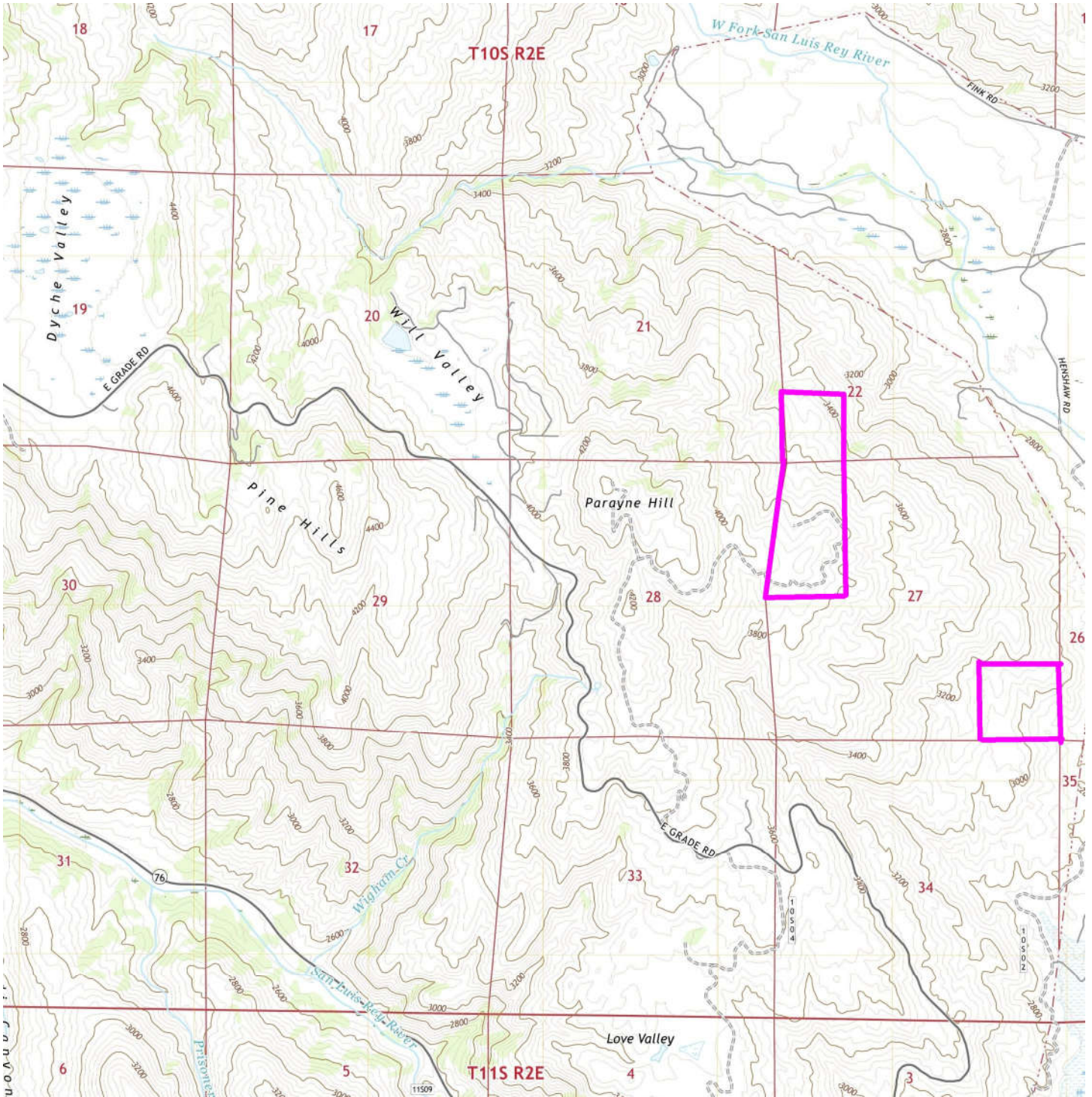


**1889 Palomar homestead granted to Louis Peyregne** [1] on the 2021 Palomar Observatory map



## William L. Peyregne land on Palomar

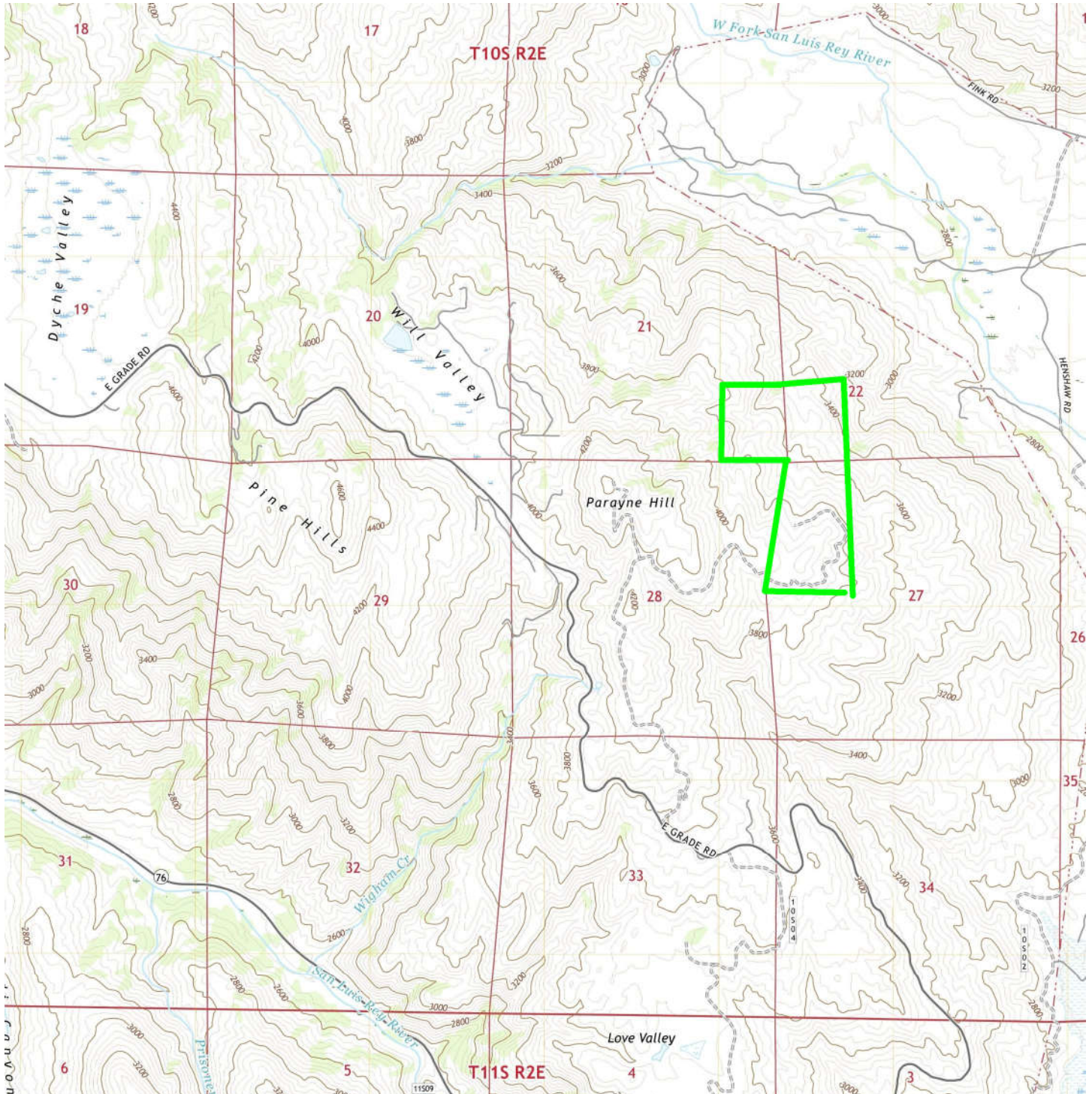
William L. Peyregne sold Palomar Mountain land to Louis Peyregne for \$43 (pink lines) with the deed filed on October 29, 1890 [5].



**1890 sale by William L. Peyregne to Louis Peyregne [5] on the 2021 Palomar Observatory map**



William L. Peyregne purchased 160 acres on Palomar Mountain from the U.S. Government (green lines) that was recorded July 30, 1891 [1]. Most of this land was involved in the previous transaction above.



**1891 Palomar land purchase by William L. Peyregne [1] on the 2021 Palomar Observatory map**





## References

1= U.S. Department of Interior, Bureau of Land Management, General Land Office Records [glorerecords.blm.gov/default.aspx](http://glorerecords.blm.gov/default.aspx)

Bertrand Peyregne, Cash entry 160 acres 6/12/1885  
Township - Range 10S - 2E, Section 33, Aliquots W $\frac{1}{2}$  of E $\frac{1}{4}$

Bertrand Peyregne, Homestead 160 acres 11/16/1891  
Township - Range 6S - 3W, Section 12, Aliquots NE $\frac{1}{4}$

Louis Peyregne, Homestead 160 acres 7/9/1889  
Township - Range 10S - 2E, Section 28, Aliquots E $\frac{1}{2}$  of NE $\frac{1}{4}$ , Aliquots SW $\frac{1}{4}$  of NE $\frac{1}{4}$ , Aliquots NW $\frac{1}{4}$  of SE $\frac{1}{4}$

Louis Peyregne, Homestead 160 acres 7/9/1889  
Township - Range 10S - 2E, Section 28, Aliquots S $\frac{1}{2}$  of NE $\frac{1}{4}$ , Aliquots NE $\frac{1}{4}$  of NE $\frac{1}{4}$ , Aliquots NW $\frac{1}{4}$  of SE $\frac{1}{4}$

William L. Peyregne, Cash Entry 160 acres 7/30/1891  
Township - Range 10S - 2E, Section 21, Aliquots SE $\frac{1}{4}$  of SE $\frac{1}{4}$ ; Township - Range 10S - 2E, Section 22, Aliquots SW $\frac{1}{4}$  of SW $\frac{1}{4}$ ; Township - Range 10S - 2E, Section 27, Aliquots W $\frac{1}{2}$  of NW $\frac{1}{4}$

2= The Sun San Diego, November 1, 1884, page 3, column 3 [blue lines on map: 10S 2E, section 33, W  $\frac{1}{2}$  of NE  $\frac{1}{4}$  and W  $\frac{1}{2}$  of SE  $\frac{1}{4}$ ]

3= A History of California ... J.M. Guinn, Volume 1. Los Angeles: Historic Record Company, 1907

4= The Sun San Diego, February 1, 1883, page 5, column 3

5= San Diego Weekly Union, October 30, 1890, page 4, column 7

Township - Range 10S - 2E, Section 27, Aliquots SE  $\frac{1}{4}$  of SE  $\frac{1}{4}$ , Section 22, Aliquots SW  $\frac{1}{4}$  of SW  $\frac{1}{4}$ , Section 27, Aliquots W  $\frac{1}{2}$  of NW  $\frac{1}{4}$

6= Perris Progress, April 10, 1913, page 5, column 3

7= Palomar and the Stars. Edward H. Davis, 1947 [archive.org/details/davis-palomar-stars\\_20230205](http://archive.org/details/davis-palomar-stars_20230205)

8= San Diego Union, March 15, 1885, page 4, column 6