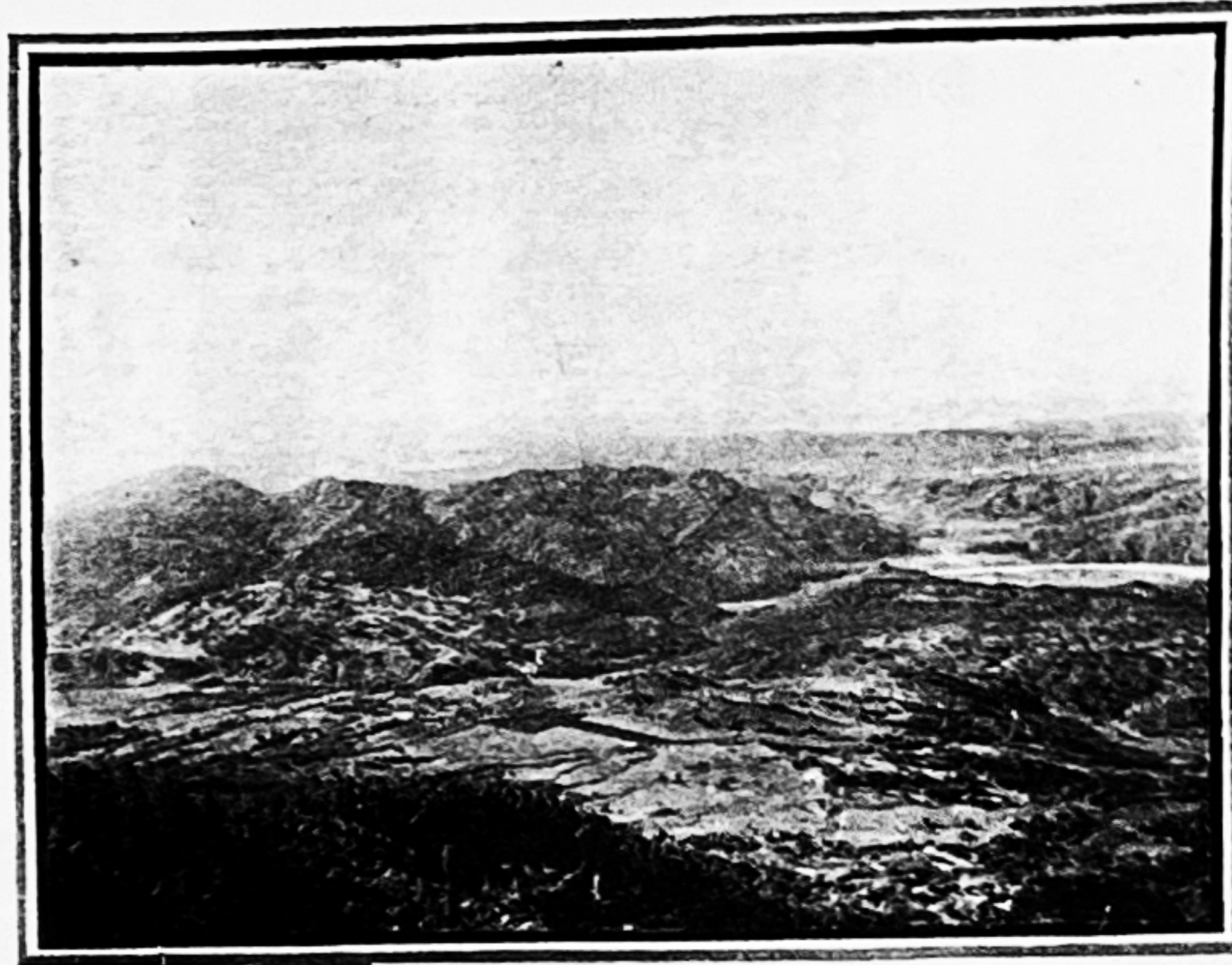
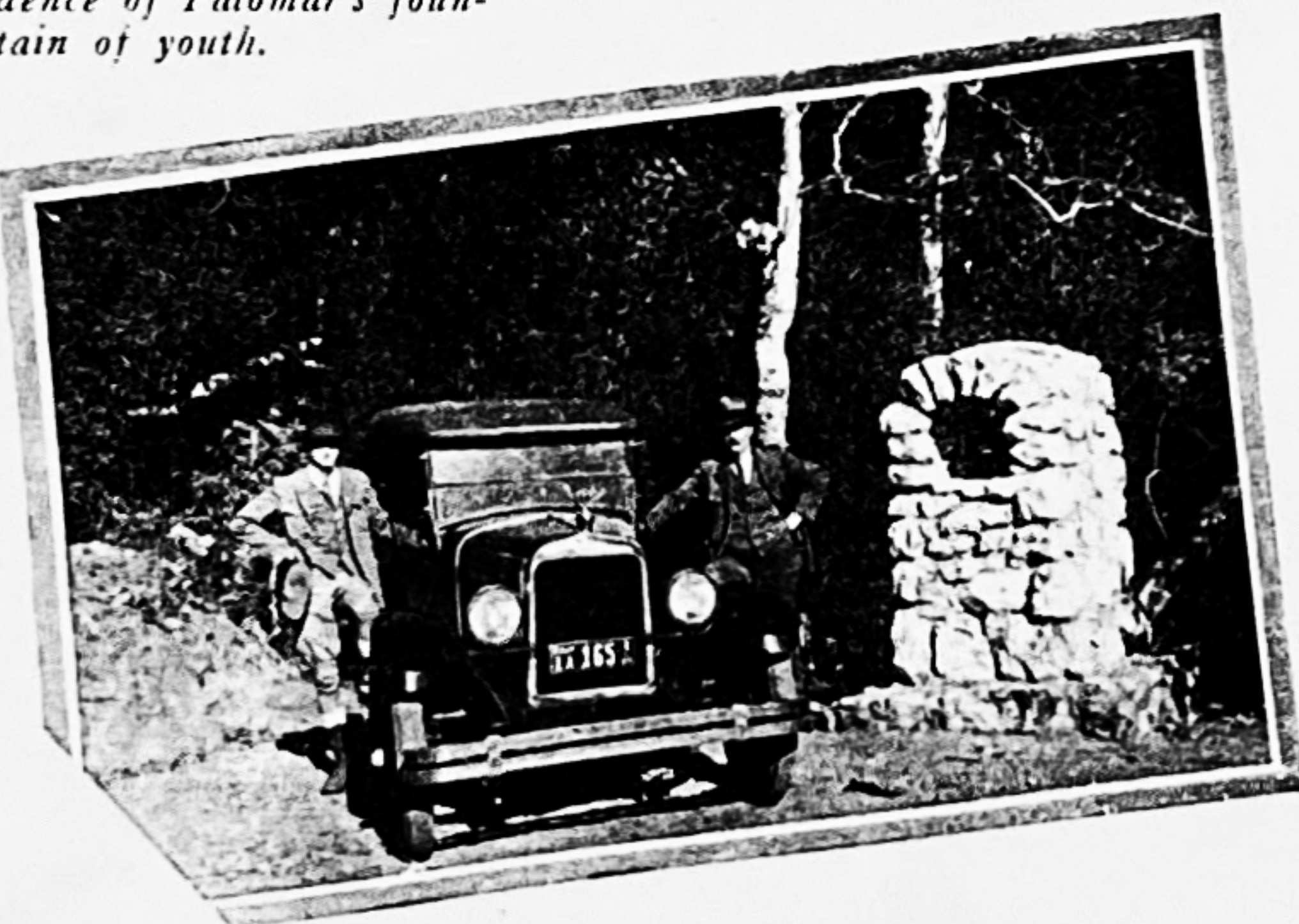


Here where the air reverberates with the thrill of enthusiasm, youth returns to chase away the encroaching streaks of gray—defies the years to leave their marks. With clouds for neighbors and flowers and trees and birds and game to make the hours all too short, this is indeed a Paradise.



Wild Flowers in mature profusion mingle their varied colors in patterns rare, and the 101 years that Nate Harrison lived are recorded in this comely monument—evidence of Palomar's fountain of youth.



Nature in her most bountiful mood has showered her fondest treasures upon the crest of romantic Palomar, the rendezvous of circling doves—from which the lofty aerie derives its loved name—Palomar—Dove's Roost.

From Inspiration Point a mile high (at top) is a vista of valley and (at left) is a glimpse of the reign of King Winter. (Below) is the hut of Old Nate, escaped slave who claimed to be the first "white man" to scale Palomar.



The National Forest Country Club is Your Answer

THE National Forest Country Club is the answer to that longing for some place to which you might go and in royal manner participate in the grandeurs that Nature ordained should be yours to enjoy.

This novel club embraces every outdoor sport in the rough. For the huntsman, the disciple of Izaak Walton, the horseman, the trail seekers and those who come solely to lounge and rest, there is more than enough amid the exclusiveness of club life to lure you too long from your routine of usual duties.

A Mountain Paradise--- Mile High In The Clouds

National Forest Country Club is located on the lofty ridge of Palomar Mountain in San Diego County—amid a countryside of which poets have sung their lores and sentiment always waxes warm.

Long known to those who have sought the little frequented places, Palomar Mountain has become a spot of world renown and on her majestic heights for more than 10 miles engineers have built a road—beautiful Rainbow Drive—the marvel of all who travel its circuitous wanderings as it leads to the very threshold of National Forest Country Club.

On a site that overlooks the valley a mile below, surrounded by thousands of acres of the Cleveland National Forest, this club holds attractions that the outdoor lover will be quick to appreciate.

Trees of countless varieties firs, cedars, oaks, laurels, manzanitas and others too numerous to mention thrive in abundance. Wild flowers that rival the botanist to describe welcome your coming in their midst.

Gurgling springs whose crystal clear waters chilled to a nicety tubble up in

numerous places. Streams that shield the wary trout, flow from their lofty heads and wind down slightly canyons in which the fisherman finds his heart's content.

The abundance of water is a mountain salvation and insures the duration of summer beauty as well as the sport for those who fish or hunt, for game abound where water may always be obtained. And this same water makes the lake a reality.

Even in Winter's grasp, the temperate breezes from the ocean, about 28 miles away, make the days delightful and contrary to most summertime experiences in the mountains, the heat is cooled by these same ozone laden zephyrs.

It is but a five hour motor ride from Los Angeles and only three hours from San Diego over paved highways and good mountain roads all the way.

Amid this loveliness of Nature an abundance of purity of mountain water springs forth

Now Open to Memberships

Memberships in this club may now be applied for. They will include all the privileges of the domain—the right to hunt and fish and ride—the use of the clubhouse with its many attractions. The initiation Fee is but slight and the dues are modest—far less than you would expect.

The clubhouse will include guest rooms and a complete club service will be maintained at popular prices. Sleeping lodges may be secured. These are to be equipped with fireplaces and wood supplied for your use together with modern conveniences.

And for those members who desire a lodge site of their own, special provisions have been made whereby they may be obtained. This provision costs far less than you would pay for a government lease that includes no such advantages as are included with the National Forest Country Club.

Mountain Quail with utmost care build their nests and hatch their young to perpetuate the huntsman's sport.

Like lakes of unusual rarity, the trees half reveal the wondrous scenic beauties of distant vales and shores.

Ferns that top the tallest man abound in summer as this picture shows.

A bit of romance of the mountains that every lover of horses will adore—the coral becomes a beauty spot at Palomar.

In Winter, the lure of the trail makes Horseback riding an enthralling sport to search out such beauty spots as this.

Pine decked mountain meadows insure the vigor of the aborigine in tired and worn bodies.

A Lodge like this to call your own—or a Sleeping lodge with club privileges as your shelter when a-mountaining you go.



An outpost of civilization, the bell tower at Pali Mission—a bit of historical interest that one meets on the way to the National Forest Country Club.