

RESULTS OF AN AUGUST DEER HUNT



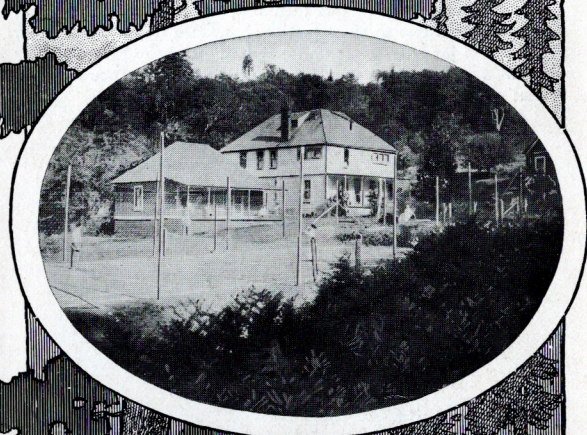
RESULTS OF A DECEMBER PIGEON HUNT



SHADY TRAIL NEAR HOTEL

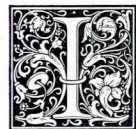
*Elan*  
**PALOMAR**

**Mountain Hotel**  
Elevation 5500 Ft.



**PALOMAR MOUNTAIN**  
**San Diego Co. - California**

# Palomar Mountain



LOCATED near the northern boundary of San Diego County, an easy four-hour trip from San Diego, and about six hours from Los Angeles. It arises abruptly from the valley to an elevation of 5000 to 6000 feet above sea level, a stretch of beautiful country twenty-five miles long and six to ten miles wide. The mountain is covered with forests of fir, cedar, pine, spruce and oak, alternating with grassy valleys and cool densely shaded canyons.

Huge ferns form a unique feature of the landscape. Varying in height from two to eight feet they make a dense covering of vivid green for hills, fields and canyons. For the lover of birds and wild flowers, Palomar is a fascinating field, abounding in varieties not found at lower altitudes.



VENISON

The average yearly precipitation on Palomar is about 60 inches. This comes mostly in the form of snow, which melts slowly and is absorbed by the ground, resulting in luxuriant foliage throughout the summer, when the country below is hot and dry. Streams of water flow in the canyons and ice cold springs are very numerous. Most of these springs are pure water, but among them are some containing soda, sulphur and iron. An iron spring of excellent tonic properties is within easy walking distance of the hotel.

## THE VIEW

Palomar mountain arises so abruptly from the valley that it affords a magnificent view of the surrounding country. The panorama includes 150 miles of coast line extending from Santa Monica to far into Mexico and overlooking Santa Catalina, San Clemente and Coronado Islands, San Diego Bay and Point Loma.

At night the darkness below is dotted with lights. Scattered around the foot of the mountain are the lights from the houses in the Indian reservations, while at a distance the street lights of Escondido, Oceanside, Del Mar, Coronado and San Diego can be plainly seen.

## ABOVE THE CLOUDS

At times all these views of the lower country are blotted out by a blanket of clouds, which drift in from the ocean, striking the mountain side at an elevation of from 1000 to 3000 feet. This endless expanse of billowing fog, broken only by mountain peaks, which rise here and there like islands, is in itself a sight never to be forgotten.

At this elevation the air is free from fog. The days are warm, but never too hot in the shade, and the nights are cold enough to make the camp fire or the big fireplace at the hotel very attractive.

## PALOMAR MOUNTAIN HOTEL

Is located in about the center of the range, at an elevation of 5650 feet. It is in a small valley surrounded by heavily wooded hills, about a quarter of a mile from the crest of the mountain, where the view is best. Hotel opens July 1st.

Located within the Cleveland National Forest and patrolled by U. S. Forest Rangers, Palomar Mountain is given adequate protection from forest fires which constitute such a menace to many resorts not so favorably located. The management urges upon guests and others the necessity for taking every precaution to **HELP PREVENT FOREST FIRES.**

## Accommodations

Guests may have their choice between rooms in the hotel and tents, which are furnished with the best of spring beds and bed clothing, and are well cared for the same as the rooms. The tents are located among the trees so guests may have a shady or sunny tent as they wish. They can be opened at both ends, so it is practically the same as sleeping out of doors.

We give close, personal attention to the kitchen and dining room and make every effort to maintain the best possible standard. Our meals are characterized by their home-like quality and preparation and service. We raise our own vegetables and have an abundance of strawberries, red, black and yellow raspberries, loganberries, blackberries, currants, gooseberries and rhubarb. Our tables are supplied with the best of rich cream and milk. Fifty feet from the hotel is an ice cold spring which furnishes water for drinking and cooking.

## Amusements

More than one hundred and fifty square miles of beautiful mountain country furnishes an almost inexhaustable supply of walks and rides. The most delightful method of exploring the mountain is on horseback, and we have a number of good saddle horses for rent, but many of the most beautiful spots are within walking distance of the hotel and accessible to any one.

The extreme summit, known as Palomar High Point, elevation 6126 feet, may be reached on foot or horseback over a good trail in a distance of 7 miles from the hotel.

For the hunter there are deer, quail, doves and tree squirrels, in season. A large part of the mountain is in the Cleveland National Forest where any one may hunt without restriction other than those imposed by the State Game Laws. For the protection of guests and campers we cannot allow any shooting around the hotel. There is good trout fishing in Pauma Creek, and La Jolla Creek, each about three miles from the hotel, and also in Iron Spring Creek, about one mile distant. The streams are stocked yearly with rainbow and speckled trout.

We have a good tennis court at the hotel. Dances, camp fires and picnics are given frequently.

## HOW TO GET THERE

From San Diego via Escondido, Valley Center and Rincon—68 miles.

From Los Angeles via Pomona, Riverside, Temecula and Pala—133 miles.

Palomar grade has been given a reputation for steepness and narrowness that is quite undeserved. It is very much like other mountain grades and presents no difficulties to an experienced driver with an ordinary car.

## AUTO STAGES

Stages leave Pickwick stage office at 10 o'clock. Arrive in Escondido at 12. Leave Escondido at 2, arriving at Palomar about 5:30 o'clock.

Persons from Los Angeles take Santa Fe at 9:10 a.m. (Buy ticket to Escondido) and arrive in Escondido at 1:15. Go to Occidental Hotel Bus, where you meet the Palomar auto stage.

Engage your seats ahead.



BEDROOM TENTS

## STAGE FARES

Special rates to guests at hotel and camp:		
Between—	One Way	Round Trip
San Diego and Palomar . . . .	\$4.00	\$7.50
Escondido and Palomar . . . .	3.50	6.50
Children under 6 years, half price.		
Twenty-five pounds baggage allowed each person. Excess baggage, 2c per pound. 25c for packages up to 12½ pounds.		

## HOTEL RATES

Board and room or tent, single, per day . . . .	\$ 3.50
Board and room or tent, double, per day . . . .	3.00
Board and tent bedroom, double bed . . . .	18.00 each
Board and tent bedroom, 2 single beds . . . .	19.00 each
Board and tent bedroom, single . . . .	20.00 each
Board and room, double . . . .	20.00
Board and room, 2 single beds . . . .	21.00
Board and room, single . . . .	22.00
Children under 6 years . . . .	Half price
Children over 6 and under 9 years . . . .	15.00
Dinners . . . .	1.00

25c extra charge for meals served late or for tray.

Free tub and shower baths to hotel guests.

For the protection of our guests, consumptives or persons with other infectious diseases are not admitted.

We reserve the right to refuse to serve.

## CAMP OUTFITS

For those wishing to do their own cooking we have tents furnished with bed spring, mattresses, tables, chairs, stoves, cooking utensils and everything needed.

## CAMP RATES

Please make reservations ahead.

Prices for camps without bedding, towels and silver:

Tent furnished for 1 person . . . .	\$4.00 per week
Tent furnished for 2 persons . . . .	5.50 per week
Tent furnished for 3 persons . . . .	7.00 per week
2 tents furnished for 3 persons . . . .	8.50 per week
2 tents furnished for 4 persons . . . .	9.50 per week

Prices when bedding and towels are furnished and laundered:

	Per week	Per week
Tent furnished for 1 person . . . .	\$6.00	
Tent furnished for 2 persons (1 bed) . . . .	\$8.50	(2 beds) \$9.50
Tent furnished for 3 persons (2 beds) . . . .	11.00	(3 beds) 13.00
2 tents furnished for 3 persons (2 beds) . . . .	13.50	(3 beds) 14.50
2 tents furnished for 4 persons (2 beds) . . . .	15.00	(4 beds) 17.00
Extra single bed . . . .	\$1.50 per week	
Extra double bed . . . .	2.00 per week	

For those having their own camp outfits there are plenty of good camp grounds at 25c per day.

## STORE

In the store we try to keep a complete line of groceries used in camp life, and are always glad to order anything wanted. We carry groceries, candy and cigars, eggs, butter, milk, vegetables, gasoline and oil.

Good saddle horses for rent, \$2.50 per day, (8 hours) \$1.50 half day (4 hours). Overtime 50c per hour.

For full particulars, hotel reservations or stage tickets write or call

DR. MILTON BAILEY

501 Watts Building, San Diego, Cal.

Phone, Main 138 (between 4 and 5 P. M.)

OR

PICKWICK STAGE UNION STATION

Cor. First and E Streets

Phones, Main 340; Home 1555

OR

PALOMAR MOUNTAIN HOTEL

Phone Long Distance, via Pala, Cal.





ABOVE THE CLOUDS



AN INDIAN TEPEE



DOANE VALLEY



PAUMA TROUT STREAM