

SHADY TRAIL NEAR HOTEL

PALOMAR

Mountain Hotel

Elevation 5500 Ft.



PALOMAR MOUNTAIN
San Diego Co. - - California

Palomar Mountain



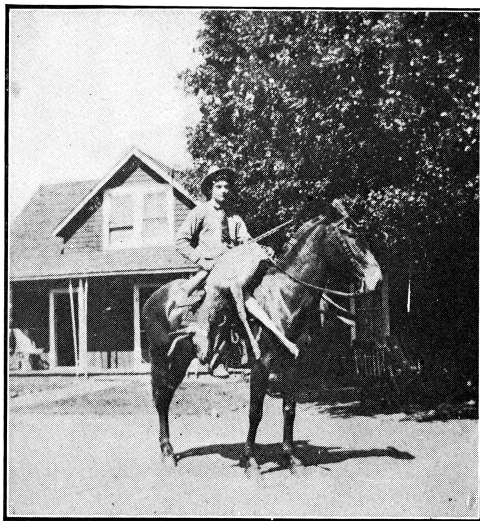
S LOCATED in San Diego County, about 50 miles north of San Diego.

It is a range of beautiful, heavily timbered mountains, 5000 to 6000 above sea-level, 25 miles long and 6 and 10 miles wide.

On top the mountains are covered with forests, grassey valley and fern covered hillsides.

In all the canyons are streams of pure cold water fed by springs which are plentiful among the hills. Most of these springs are pure water, but there are among them springs of strong iron, sulphur and soda.

During the spring and early summer wild flowers are abundant. When all the lower country is dry and hot the vegetation and water supply on Palomar are in their prime.



VENISON

THE VIEW

The mountain scenery is as good as the best that can be found anywhere, but what surpasses anything of its kind is the view of the lower country from the crest of the mountain. The panorama includes 150 miles of coast line extending from Santa Monica in the north to far south into Mexico. The Santa Catalina, San Clemente and Coronado islands, San Diego Bay and Point Loma are in plain view.

VIEW AT NIGHT

At night the darkness below is dotted with lights. In the distance you see the street lights of San Diego, Coronado, Del Mar and Oceanside. Nearer you see the Escondido and Fallbrook lights, while still nearer, dotted around the foot of the mountains, are the lights from the houses in the Indian reservations of Pala, Pauma, Rincon, Potrero and La Jolla.

VALLEY HIDDEN BY CLOUDS

At times all these views of the lower country are blotted out by the blanket of clouds which drift in from the ocean—striking the mountain side at the elevation of from 100 to 3000 feet.

While the valleys are under dense clouds or enveloped in fog, we look out over the top of the clouds and enjoy the bright sunlight or moonlight and the dry air. Here and there mountain peaks rise through the clouds like islands in the ocean.

ATTRACTIVE FEATURES

At this elevation the air is dry and free from fog. The days are warm—never too hot in the shade—and the nights are cold enough to make one enjoy the camp fire or the big fireplace at the hotel. Among the most attractive features are the immense fields and hillsides of ferns. These ferns grow to a height of from 2 to 8 feet and form a perfect network for stretches of many acres.

POLOMAR MOUNTAIN HOTEL

Is located in about the center of the range at an elevation of 5500 feet. It is in a small valley, surrounded by forests of oaks, fir, cedar, hemlock and other trees.

It is only a quarter of a mile to the crest of the mountain from where the view is the very best. Fifty feet from the hotel is an ice cold spring which furnishes water for drinking and cooking.

Accommodations

We have a limited number of rooms and plenty of tents, which have floors and are furnished as bedrooms. These tents are furnished with the best of spring beds and bed clothing, and are well cared for, the same as the rooms. The tents are located among the trees, so guests may have a shady or sunny tent, as they wish. Tents can be opened at both ends, so it is practically the same as sleeping out of doors. A dining room is maintained and conducted in connection with the tents and bed rooms. Meals are served at small tables in family style. We raise our own vegetables and have an abundance of strawberries, red, black and yellow raspberries, Loganberries, blackberries, currants, gooseberries, rhubarb and asparagus. We butcher our own beef, therefore have nothing but the very best young mountain raised beef and veal. Our tables are supplied with the best of rich cream and milk.

Amusements

In the mountains people do not have to be amused as they do elsewhere. There are so many things to see and do that the trouble is to know which to leave undone.

At the hotel is a first class tennis court for the use of hotel guests. (Be sure to bring your tennis shoes and racquet.)

For the hunter, there are deer, quail, tree squirrels and doves. We should not advise any one to come to Palomar purely on a hunting trip, although there is very good hunting here. A great deal of the mountain is private lands on which hunting is forbidden, but persons may hunt on the government forest reserve without restriction. For the protection of hotel guests and campers we can not allow any shooting around the camp.

There is good trout fishing in Pauma creek, three miles from the hotel. The stream is stocked with rainbow and speckled trout. Many fine catches were made last year.

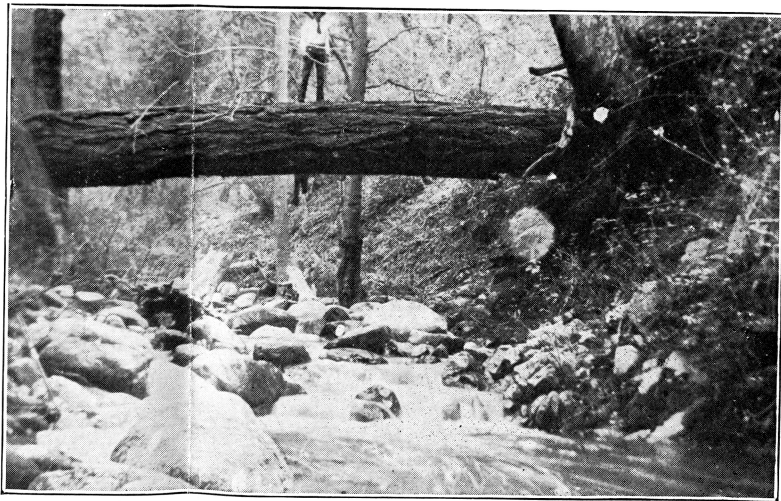
There are many beautiful hikes around the mountains, some being to the Iron Spring; to the Lookout; Bougher's point, Rainbow falls, Doane valley, Pine valley and the Monument, which is the highest point in San Diego county. A hike on a warm day, topped off with a cold shower, puts one in good shape for a hearty meal.

Horseback riding is very popular, and we have some first class horses, and also rigs, if desired.

The evenings are spent around camp fires or by the fireplace, singing around the piano, candy pulls, dances or hay rides.

If you come to the mountain for a rest, there is no limit to the quiet spots where you can get away from every one and rest to yours heart's content.

Bring a kahki suit or some old clothes; good, strong shoes; tennis shoes and racquet. Also bring a kodak, for you will find lots of use for it.



PAUMA TROUT STREAM

HOW TO GET THERE

From San Diego via Escondido, Valley Center and Rincon—68 miles.

From Los Angeles via Pomona, Corona, Temecula and Pala—133 miles.

The mountain grade will be in good condition this year, and can be made by any ordinary machine. Be sure that your brakes are all right, and have plenty of gasoline and water before starting up.

AUTO STAGES

Stages leave Pickwick stage office at 11 o'clock. Arrive in Escondido at 12:45. Leave Escondido at 1:30, arriving at Palomar about 5 o'clock.

Persons from Los Angeles take Santa Fe at 9:10 a. m. (Buy ticket to Escondido) and arrive at Escondido at 1:15. Go to Occidental Hotel in hotel bus, where you meet the Palomar auto stage.

Engage your seats ahead.

STAGE FARES

Between—	One Way Round Trip
San Diego and Palomar	\$4.50 \$8.50
Escondido and Palomar	4.00 7.50

Twenty-five pounds baggage allowed each person. Excess baggage, 2 cents per pound.

Children under 6 years, half price.

HOTEL RATES

Board and room or tent, single, per day	\$2.50
Board and room or tent double, per day	2.25
Board and tent bedroom, double bed	\$11.00 each
Board and tent bedroom, 2 single beds	12.00 each
Board and tent bedroom, single	13.00 each
Board and room, double	13.00
Board and room, single	14.00
Children under 6 years	Half price
Children over 6 and under 9 years	10.00

Breakfast, 50 cents. Dinner at noon or evening, 75 cents. 25 cents extra charge for meals served late or for tray.

No extra charge for lunch put up *for guests to carry on picnic.

Free tub and shower baths to guests.

For the protection of our guests, consumptives or persons with other infectious diseases are not admitted.

We reserve the right to refuse to serve.

CAMP OUTFITS

For those wishing to do their own cooking we have tents furnished with bed springs, mattresses, tables, chairs, stoves, cooking utensils and everything needed except bedclothes, linen and silverware.

Please make reservations ahead.

Tent furnished for 1 person	\$3.00 per week
Tent furnished for 2 persons	4.50 per week
Tent furnished for 3 persons	6.00 per week

For those having their own camp outfit there are plenty of good camp grounds at the Iron Spring Camp ground. Camping or water privilege 25 cents per week per person in camp.

Good pasturage at 20 cents per day, or \$1.25 per week.

STORE AND POSTOFFICE

Mail 3 Times a Week

In the store we try to keep a complete line of groceries used in camp life, and are always glad to order anything wanted. We carry groceries, candy and cigars, eggs, butter, milk, vegetables, fresh beef, gasoline, hay and grain.

Good saddle horses for rent, \$2.50 per day, (8 hours) \$1.50 half day (4 hours). Overtime 50c per hour.

Horses fed and cared for at stable, \$1.25 per day.

For full particulars, hotel reservations or stage tickets write or call

DR MILTON BAILEY,
501 Watts Bldg., San Diego, Cal.
Phone Main 138

Or

PICKWICK STAGE OFFICE
Phone Main 340

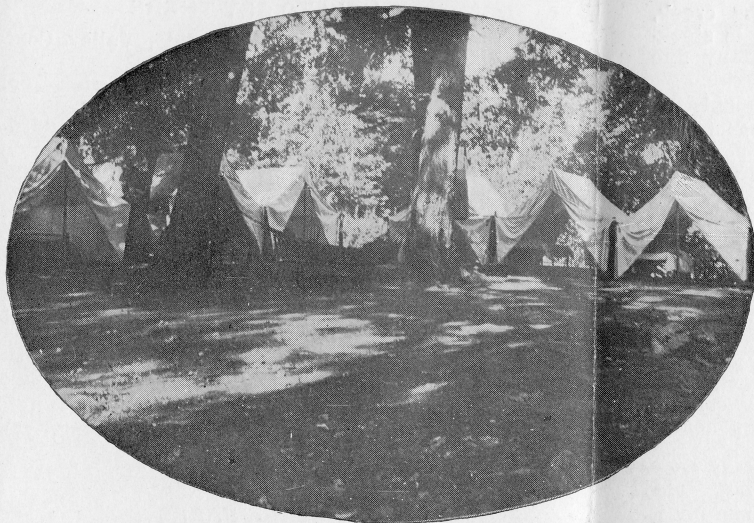
Or

PALOMAR MOUNTAIN HOTEL
Nellie Post Office
Phone Long Distance, via. Pala, Cal.

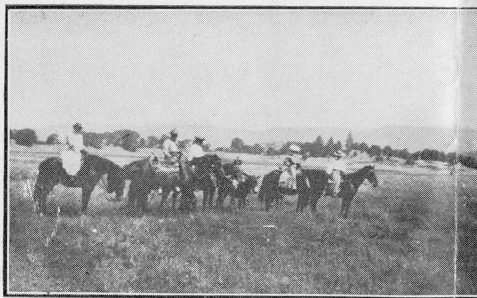
RESULTS OF AN AUGUST DEER HUNT



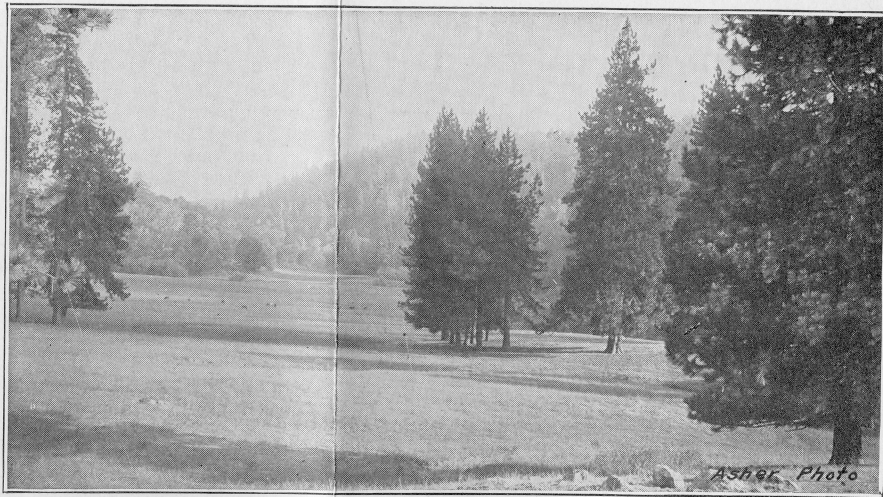
RESULTS OF A DECEMBER PIGEON HUNT



BEDROOM TENTS AT HOTEL

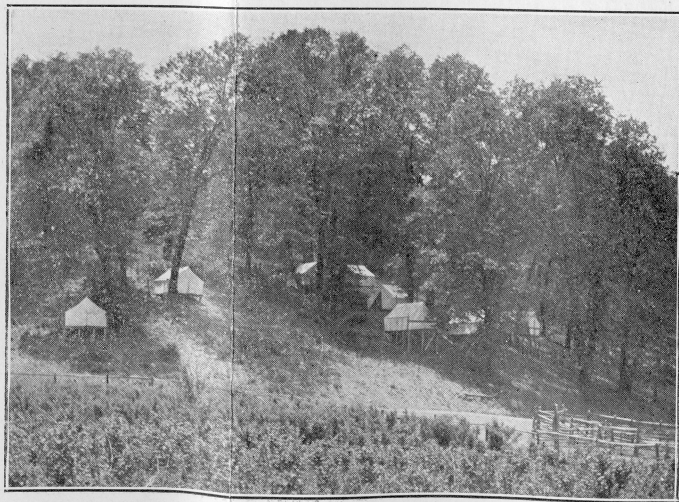


UPPER DOANE VALLEY



Asher Photo

DOANE VALLEY



BEDROOM TENTS