

## PALOMAR MOUNTAIN

Palomar is located about 60 miles north of San Diego, and 21 miles west of Warner Hot Springs. This grand old mountain stands in the midst of a range of smaller mountains and reaches at its highest point an elevation of 6100 feet above



RAINBOW FALLS

sea level. On account of their height these mountains receive an annual rainfall of about 60 inches. Over 200 ice-cold springs, some of which are charged with iron, sulphur and soda, abound, and the woods are full of clear, sparkling streams. The days are long and pleasant, never hot, and the nights are always cool enough to insure a good rest.

The hillsides are covered with brakes varying in height from 2 to 8 feet. The variety of wild flowers on Palomar is not exceeded in any part of the state. The azalia, lilac, several kinds of Mariposa lilies, tiger lily, dog-wood, and numerous other flowers beautify the hills. There are numerous small valleys carpeted with



INDIAN TEPEE





*CAMP CONTENTO*

clover and other wild grasses, and surrounded by forests of immense trees. Trees 6 to 8 feet in diameter are very common, and some are to be found which are 13 feet in diameter, and 200 feet high.

One of the most interesting features of Palomar is the view of the surrounding country. One can see, at a glance, all the intervening country from Los Angeles and Catalina Island to Table mountains in Mexico. Escondido, 30 miles away, appears within a stone's throw, while a magnificent stretch of sea coast 300 miles in length bounds the western horizon.

### **AMUSEMENTS**

Probably the most popular country sport is horseback riding. This is the best way of seeing the mountains, for by this mode many places of interest, otherwise inaccessible may be reached. Good saddle horses may be secured. There are many shady trails and roads through the forests, which

afford delightful walks, and there is a limitless expanse where Nimrod may try his endurance and prove himself a "deer slayer." During their season wild pigeons are very plentiful; here, too, are found doves, valley and mountain quail, and the beautiful little grey squirrel. To those interested in Indian relics the mountain offers several old Indian camps where still can be found arrow points, pottery and other relics. These arrow points are among the rarest; some being made of quartz crystal and even of tourmaline. Still standing on the mountain and known to be over a century old are a number of tepees made and yet used by the Indians. Woodland tramps to the springs, the tepees, the "Look-out" and the beautiful 90 foot falls of Chupa Rosa Park; equestrian parties through wide grassy valleys or pine-covered slopes, and picnic lunches eaten beneath the giant fir trees occupy the long glad days. While huge bonfires, around which the entire camp assembles are lighted as night falls over the mountain. Here many a jovial story is swapped, while "Palomar clams" and fresh roasted corn meets the demand of the insatiable mountain appetite. Here are no strangers, nor are any old. Ask Uncle Nate, who is foreshore young!

Bring your tennis rackets and play on the new court at Camp Contento; croquet at Hotel Palomar and basketball at both places.



## **HOW TO GET TO PALOMAR.**

Special automobile parties will leave San Diego for top of Palomar mountain direct via Escondido—two or three times each week. Special rates \$6 each way from San Diego; \$4 each way between Escondido and Palomar.

Four days of starting communicate with Ed Fletcher, 1548 D street, San Diego Cal.

At Oceanside an automobile will meet the morning trains from San Diego on Mondays, Wednesdays and Fridays, and transport passengers to the foot of Palomar, where they are met by a stage and taken up the grade. Round trip from San Diego to Palomar by Santa Fe to Oceanside, auto and stage to Palomar, \$15. This includes stops at famous San Luis Rey and Pala Missions.

From San Diego the direct route to Palomar is by way of Escondido and Valley Center, and from Los Angeles by the way of Temecula and Pala.

Thirty autos climbed the grade last season, one of which was a baby Reo, carrying 3 passengers. Make it a point to have plenty of water before autos start up grade.

## **ACCOMMODATION AND RATES.**

Camp Contento will open June 1st, and Hotel Palomar July 1st.

We have erected a new dining-room and kitchen at Camp Contento.

Room or bed-room tent and board \$10 to \$12 per week, at either place.

Table board \$7.50 per week.

Free baths to all guests.

## **OUTFITS FOR CAMPERS.**

Tents furnished with bed, springs, tables, chairs; stove and cooking utensils, \$2.50 to \$5.00 per week. (No dishes or bedding with these outfits.)

Special rates by month or season.

Store, fresh groceries, milk, eggs, vegetables, fruit, hay and grain.

Saddle horses and rigs for rent.

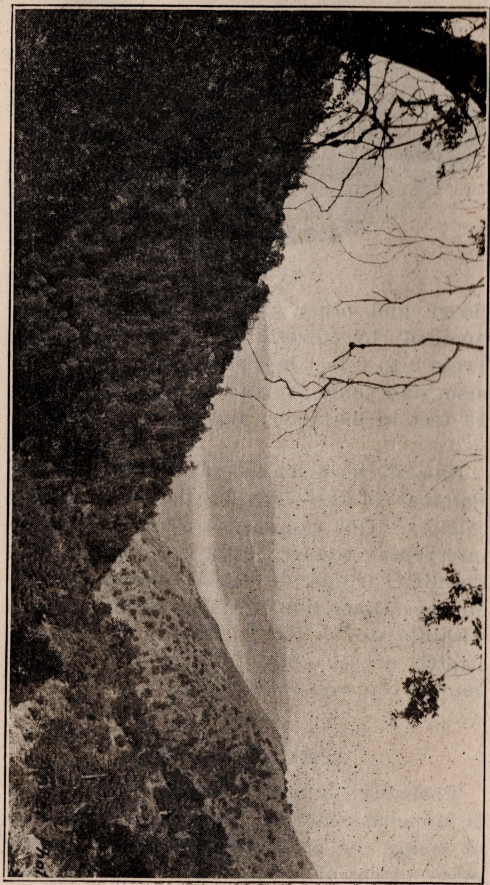
Horses fed and cared for, also good pasturage at 20c per day.

No consumptives.

Plenty of good camp grounds for those bringing their own outfits.

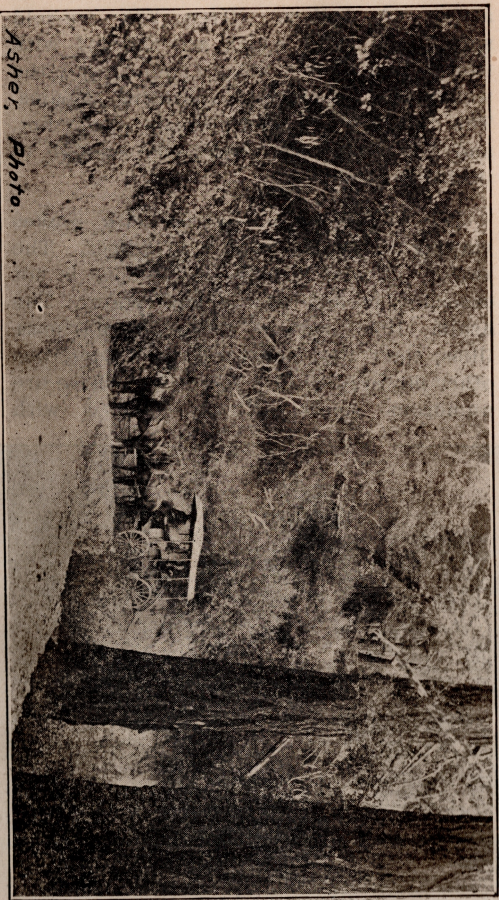
Address,

BAILEY BROS, Props.,  
Nellie P. O., Cal.



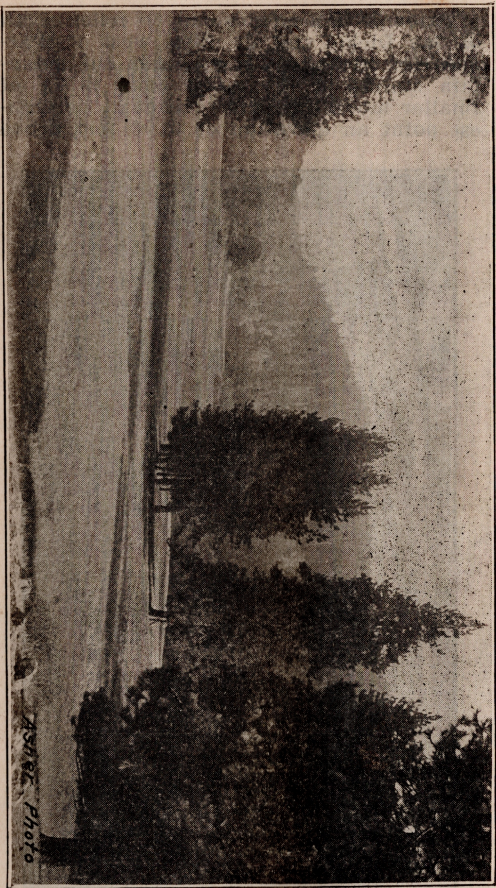
ABOVE THE CLOUDS





*Asher, Photo.*

PALOMAR STAGE. 1907



PALOMAR MOUNTAIN—HOTEL AND TENT VILLAGE