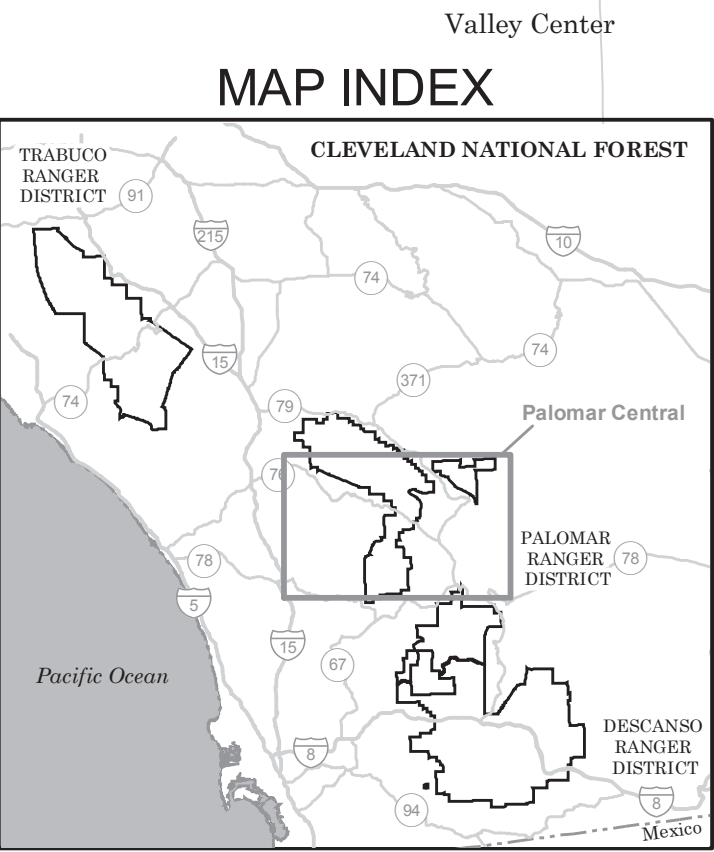


Motor Vehicle
Use Map
Cleveland
National Forest

Palomar Central Map

California Forest Service
United States Department of Agriculture



Short Route Table - Palomar Central Map		
Route Number	Length in Miles	Legend
9S05B	.2015	Roads Open to Highway Legal Vehicles Only, Yearlong
9S07D	.04	Roads Open to Highway Legal Vehicles Only, Yearlong
9S07C	.05	Roads Open to Highway Legal Vehicles Only, Yearlong
10S03	.16	Roads Open to Highway Legal Vehicles Only, Yearlong
9S05A	.6	Roads Open to Highway Legal Vehicles Only, Yearlong
9S05C	.0463	Roads Open to Highway Legal Vehicles Only, Yearlong

Roads Open to Highway Legal Vehicles

Roads Open to All Vehicles

Trails Open to All Vehicles

Trails Open to Vehicles 50" or Less in Width

Trails Open to Motorcycles Only

Special Vehicle Designation (See Table)

Interstate

Highways, US, State

Other Public Roads

Other Public Trails

703333

Short Route Identifier

Areas Open to Cross-Country Travel

FS Campground

Picnic Area

Motorized Trailhead

Information Site

Peaks

Forest or Unit Boundary

National Forest System Lands

Non-National Forest System Lands within the National Forest

Wilderness Areas

Large Lakes

Legend

0

1.5

3

Miles

N

OPERATOR RESPONSIBILITIES

Operating a motor vehicle on National Forest System roads, National Forest System trails, and in areas on National Forest System lands carries a greater responsibility than operating that vehicle in a city or other developed setting. Not only must you know and follow all applicable traffic laws, you need to show concern for the environment as well as other forest users. The misuse of motor vehicles can lead to the temporary or permanent closure of any designated road, trail, or area. As a motor vehicle operator, you are also subject to State traffic law, including State requirements for licensing, registration, and operation of the vehicle in question.

Motor vehicle use, especially off-highway vehicle use, involves inherent risks that may cause property damage, serious injury, and possibly death to participants. Drive cautiously and anticipate rough surfaces and features, such as snow, mud, vegetation, and water crossings common to remote driving conditions. By your participation, you voluntarily assume full responsibility for these damages, risks, and dangers. Take care at all times to protect yourself and those under your responsibility.

Much of the Cleveland National Forest is remote. Medical assistance may not be readily available. Cellular telephones do not work in many areas of the Cleveland National Forest. Take adequate food, water, first-aid supplies, and other equipment appropriate for the conditions and expected weather.

ALWAYS REMEMBER TO RESPECT PRIVATE LAND! PROTECT YOUR PRIVILEGE. STAY ON DESIGNATED ROADS AND TRAILS AND IN DESIGNATED AREAS.

Read and understand this map in its entirety. If you have questions please contact the Cleveland National Forest for clarification.

As a motor vehicle operator on a National Forest System road, trail, or area, you must comply with this map, as well as all Federal, State, and local laws and regulations. Compliance with these rules is your responsibility.

PROHIBITIONS

It is prohibited to possess or operate a motor vehicle on National Forest System lands on the Cleveland National Forest other than in accordance with these designations (36 CFR 261.13).

Violators of 36 CFR 261.13 are subject to a fine of up to \$5,000, imprisonment for up to 6 months, or both (18 U.S.C. 357 (e)). This prohibition applies regardless of the presence or absence of signs.

This map does not display nonmotorized uses, over-snow uses, or other facilities and attractions on the Cleveland National Forest. Obtain forest visitor information from the local national forest office.

Designated roads, trails, and areas may also be subject to temporary, emergency closures. As a visitor, you must comply with signs notifying you of such restrictions. A national forest may issue an order to close a road, trail, or area on a temporary basis to protect the life, health or safety of forest visitors or the natural or cultural resources in these areas. Such a temporary and/or emergency closures are consistent with the Travel Management Rule (36 CFR 212.52 (b), 36 CFR 261 subpart B).

The designation "road or trail open to all motor vehicles" does not supersede State traffic law.

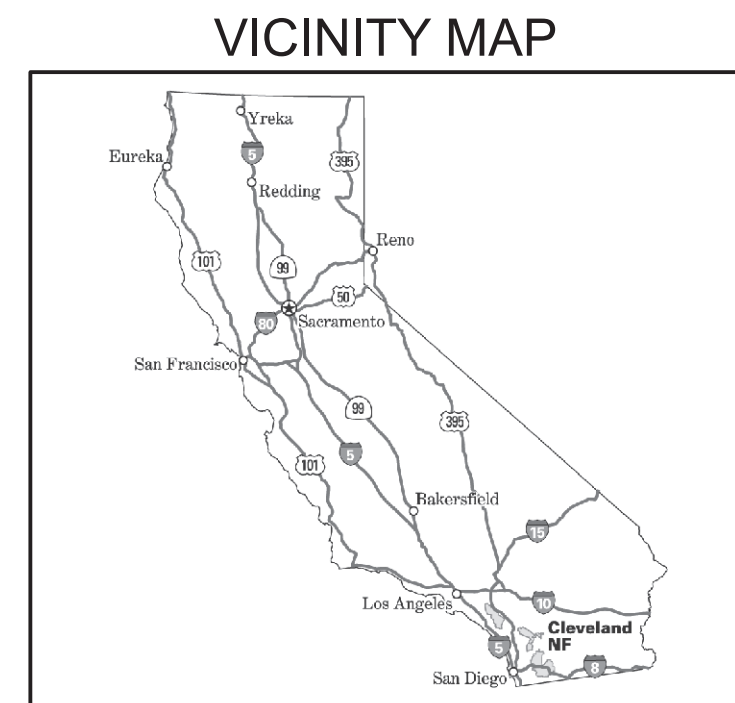
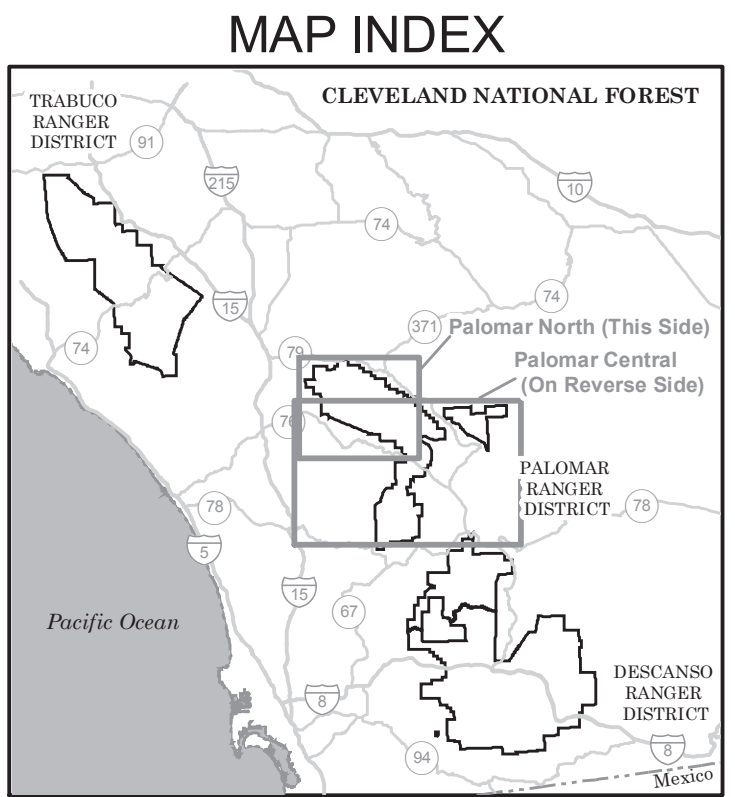
Motor Vehicle Use Map
Cleveland National Forest
Palomar Ranger District
Palomar North Map (This Side) and Palomar Central Map (On Reverse Side)



Legend

- Roads Open to Highway Legal Vehicles
- Roads Open to All Vehicles
- Trails Open to All Vehicles
- Trails Open to Vehicles 50" or Less in Width
- Trails Open to Motorcycles Only
- Special Vehicle Designation (See Table)
- Interstate
- Highways, U.S. State
- Other Public Roads
- Other Public Trails
- Short Route Identifier
- 70333
- Areas Open to Cross-Country Travel
- FS Campground
- Picnic Area
- Motorized Trailhead
- Information Site
- Peaks
- Forest or Unit Boundary
- National Forest System Lands
- Non-National Forest System Lands within the National Forest
- Wilderness Areas
- Large Lakes

0 0.25 0.5 1 1.5 2 Miles



PURPOSE AND CONTENTS OF THIS MAP

The designations shown on this map are effective as of the date stamped or printed on the front cover. This map shows the National Forest System roads, National Forest System trails, and the areas on National Forest System lands in the Cleveland National Forest that are designated for motor vehicle use pursuant to 36 Code of Federal Regulations (CFR) 212.51. This map also contains a list of those designated roads, trails, and areas; the types of vehicles that are allowed on each route and in each area; and any seasonal restrictions that apply on those routes and in those areas.

Designation of a road, trail, or area for motor vehicle use by a particular class of vehicle under 36 CFR 212.51 should not be interpreted as encouraging or inviting use or implying that the road, trail, or area is passable, actively maintained, or safe for travel. Motor vehicle designations include parking along designated routes and at facilities associated with designated routes when it is safe to do so and when not causing damage to National Forest System resources. Seasonal weather conditions and natural events may render designated roads and trails impassable for extended periods. Designated areas may contain dangerous or impassable terrain. Many designated roads and trails may be passable only by high-clearance vehicles or four-wheel-drive vehicles. Maintenance of designated roads and trails will depend on available resources, and many may receive little maintenance.

This motor vehicle use map identifies those roads, trails, and areas designated for the motor vehicle use under 36 CFR 212.51 for the purpose of enforcing the prohibition at 36 CFR 261.13. This is a limited purpose. The other public roads are shown for information and navigation purposes only and are not subject to designation under the Forest Service travel management regulation.

These designations apply only to National Forest System roads, National Forest System trails, and areas on National Forest System lands.

