

# *Palomar Mountain*

## **STATE PARK**

### ELEVATION:

Hqtrs.—5,300 ft.

Palomar—6,126 ft.

SIZE: 1724 acres

CAMPSITES: 51

PICNIC SITES: 36

LOCATION: 35 miles

northeast of Escondido,

San Diego County,

on State Highway 76.

ACTIVITIES: Hiking,

horseback riding

including trails and

horse corrals,

campfire programs,

fishing.

STATE OF CALIFORNIA  
DEPARTMENT OF  
NATURAL RESOURCES

DIVISION  
OF  
BEACHES AND PARKS



## PALOMAR MOUNTAIN STATE PARK

Palomar Mountain State Park is located off State Highway 76, approximately 35 miles northeast of Escondido in San Diego County. Most of the 1,724 acres in this unit lie at an altitude of over 5,000 feet, with the summit of Palomar rising to 6,126 feet.

In addition to the spectacular views afforded by this mountain park, visitors will find luxuriant mountain meadows, some of the largest Canyon Live Oaks to be found in California and interesting mixed forests. This cool elevation produces a yearly rainfall of more than 40 inches which is responsible for the mountain's green mantle, in contrast to the surrounding lower arid areas. A great variation in climate exists between the hot, dry summers and cold, snowy winters.

The evergreen forests, composed mostly of Big-cone Spruce, Douglas Fir, White Fir and Incense Cedar, have an undercover of Azalea, Dogwood, Ceanothus, Lupine, Lilies and many ferns.

Many species of birds, and numerous mammals such as the Southern Mule Deer, thrive in this mountain habitat, feeding about the meadows, chaparral and oak woodlands, typical of the Southern California mountain ranges. The Upper and Lower Doane Valleys are centers of abundance of wildlife.

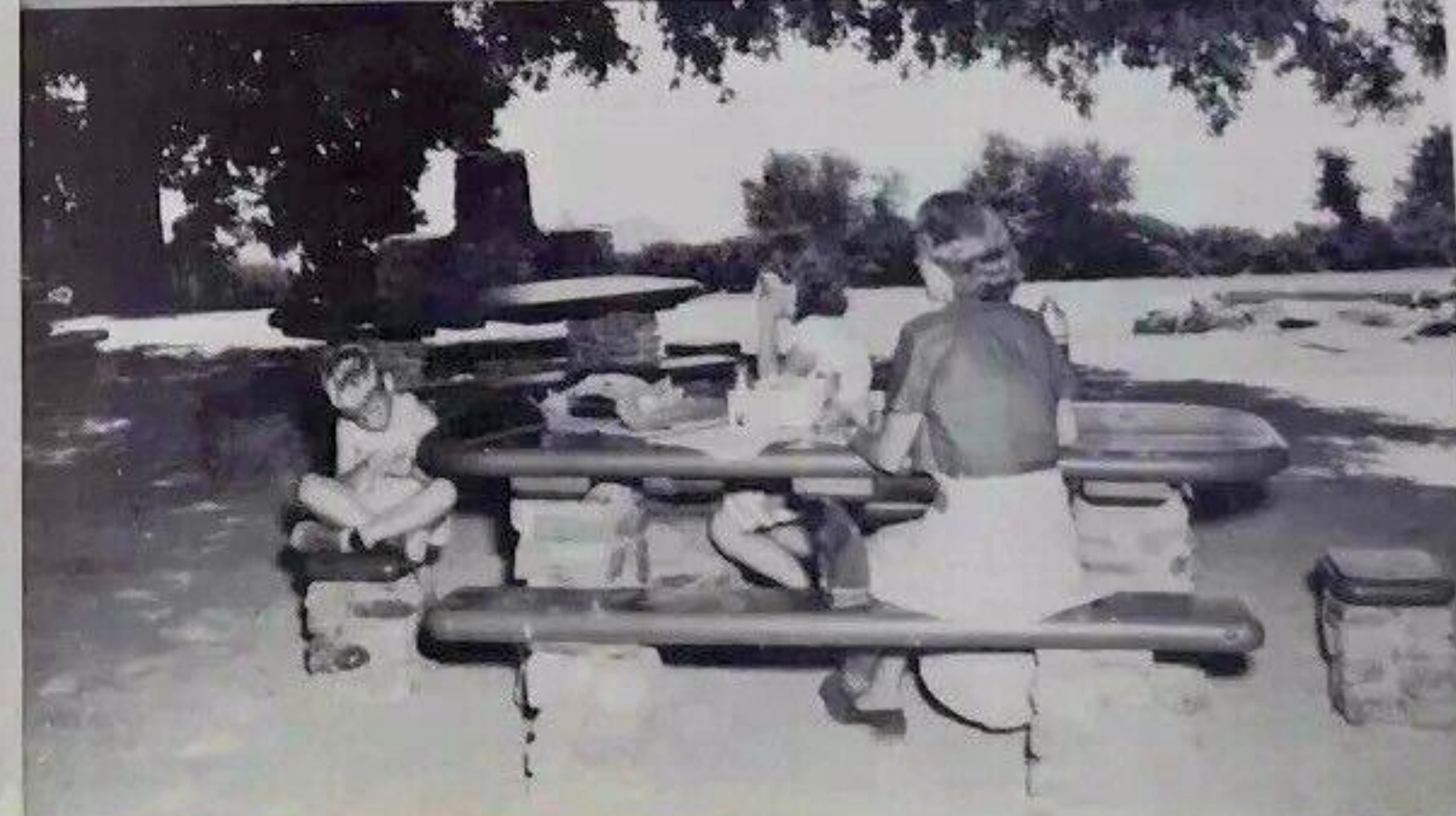
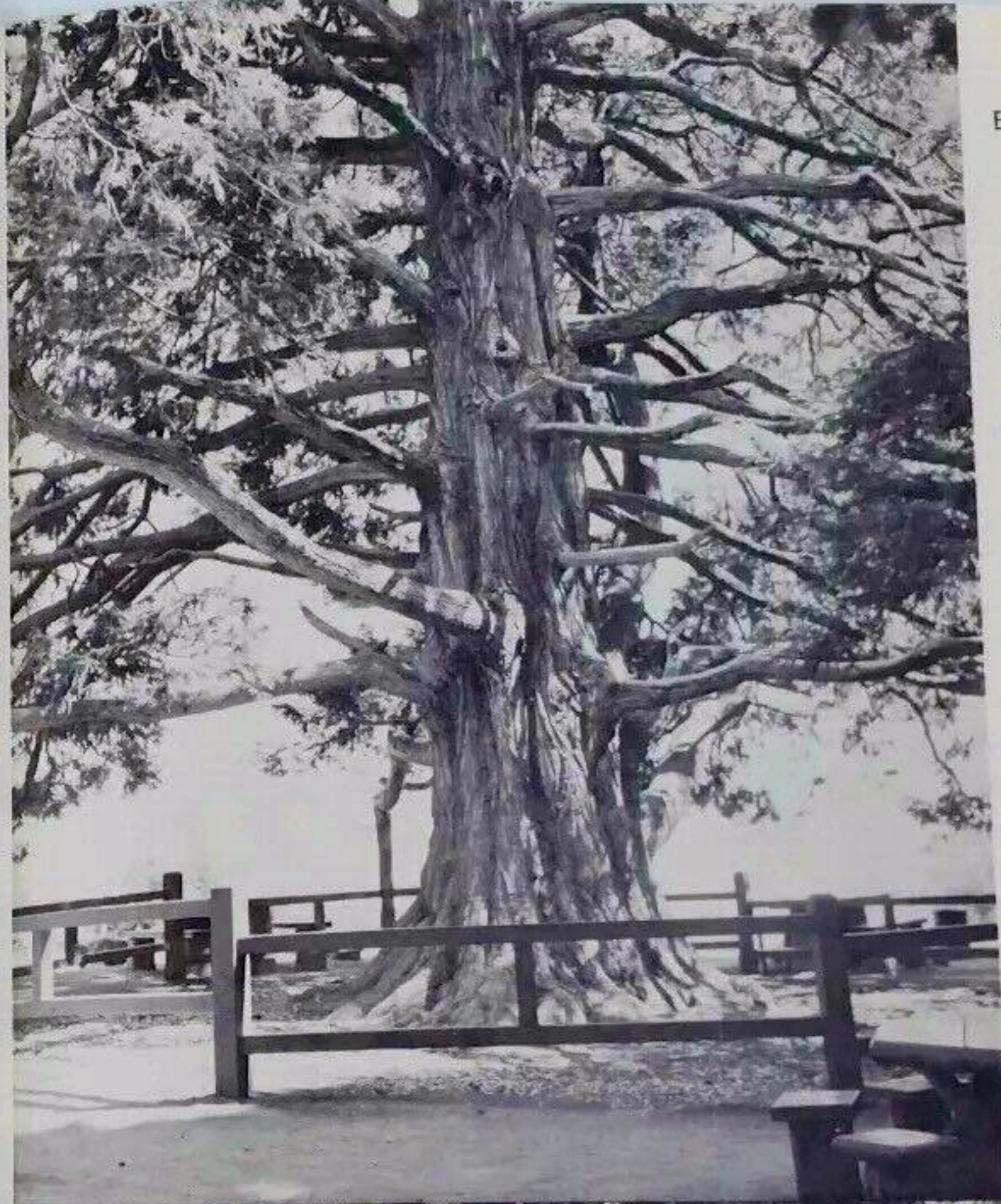
Six miles to the north of the park is located the Palomar Observatory which houses the world-famous 200-inch telescope.

The camping season extends from approximately May 1 to November 1. No trailer hookups are available, but small trailers may be parked in campsites at the discretion of the park supervisor. In lower Doane Valley, a primitive horse camp has been constructed. Horse corrals, water and parking for horse trailers are available at a moderate cost. Trails are available in the park and adjacent national forest areas.

### HISTORY

With the arrival of the white man in 1769, Spanish explorers, including Portola, Serra, and Anza, passed within a few miles of Palomar Mountain, but none stopped to explore it until 1795. Then, with the establishment of the Asistencia de San Antonio de Pala in 1816, Franciscans from the San Luis Rey Mission entered the region to attempt to Christianize the local Indians. Eventually the Mission Fathers controlled all land around the mountain. In 1844, J. T. Warner, the first United States citizen to establish a home in this region, received a land grant from the Mexican Government that included the present park area. Many of the immigrants to California during the gold rush passed through Warner's Ranch.

In 1932, the State of California began negotiations for acquisition of land on Palomar Mountain. Ten separate parcels were acquired which made a total of 1,724 acres. The price of almost \$50,000 was matched by cash and land from San Diego County and various individuals to realize this as a park for public enjoyment.



#### ELEVATION:

Hqtrs.—5,300 ft.

Palomar—6,126 ft.

SIZE: 1724 acres

CAMPSITES: 51

PICNIC SITES: 36

LOCATION: 35 miles

northeast of Escondido,

San Diego County,

on State Highway 76.

ACTIVITIES: Hiking,

horseback riding

including trails and

horse corrals,

campfire programs,

fishing.

STATE OF CALIFORNIA  
DEPARTMENT OF  
NATURAL RESOURCES

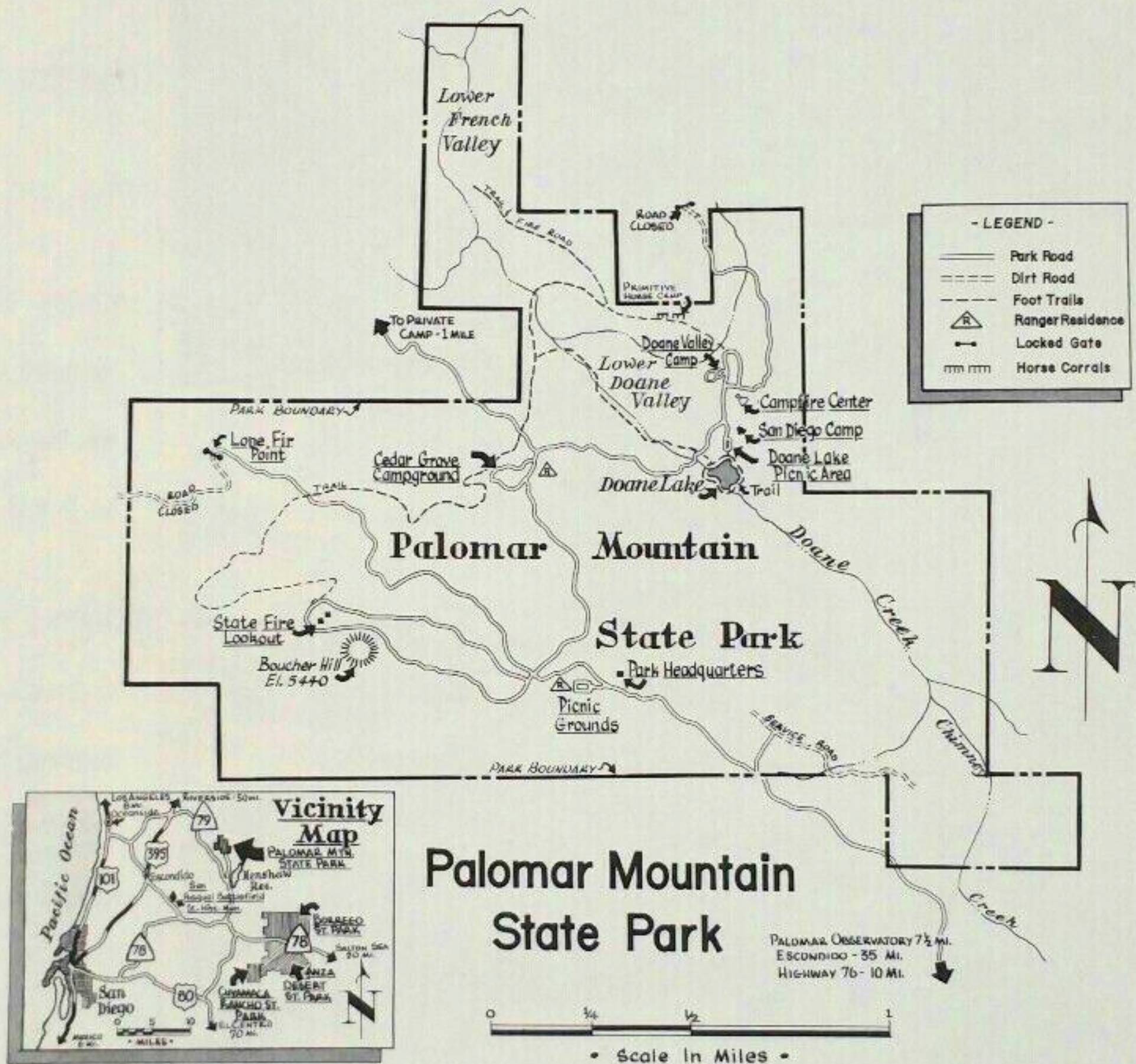
DIVISION  
OF  
BEACHES AND PARKS



## RULES AND REGULATIONS

The State Park Commission has established rules and regulations to protect parks for present and future generations.

1. All natural, historical and archeological objects receive full protection and shall not be removed from any state park. For this reason, hunting is not permitted.
2. Gathering firewood is forbidden in all state parks because dead and down wood improve plant growth. Fuelwood is sold at park headquarters. Fires must be kept in stoves.
3. Dogs are prohibited between 8:00 p.m. and 7:00 a.m., and must be on leash at other times.
4. Place all litter and rubbish in proper containers.



## PARK ADMINISTRATION

The State Park System was established in 1927, and today includes more than 150 units, totaling over 600,000 acres. Areas selected for state parks must have outstanding natural and scenic values, a rich historical background, or statewide outdoor recreational value.

The State Park System is administered by the State Park Commission whose seven members are appointed by the Governor. Administration is carried out by the Division of Beaches and Parks, Department of Natural Resources, in Sacramento, in six district offices, and in units in the field.

For specific information on this park, write to the Park Supervisor, Palomar Mountain State Park, Palomar Mountain, California.